

Software, Consulting & Training.  
For over 37 Years.



**RockWare®**

Since 1983



Environmental



Geotechnical



Hydrology

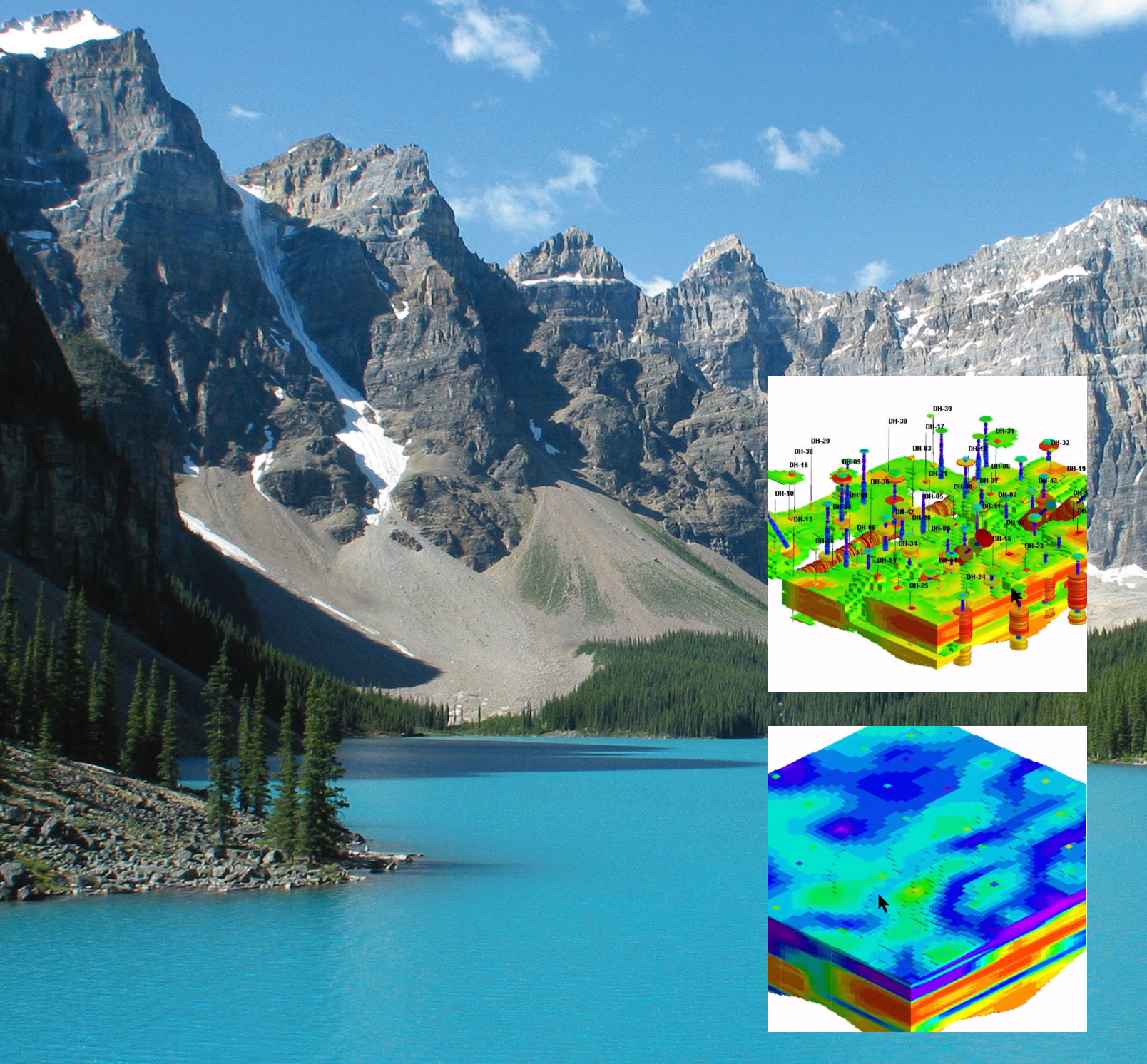


Mining



Petroleum





RockWorks is a comprehensive program that offers visualization and modeling of spatial data and subsurface data. Whether you are a petroleum engineer, environmental scientist, hydrologist, geologist or educator, RockWorks has what you need.



# What's New in RockWorks 17®



RockWorks contains tools that will save time and money, increase profitability and provide you with a competitive edge through high-quality graphics, models and plots. See what's new!

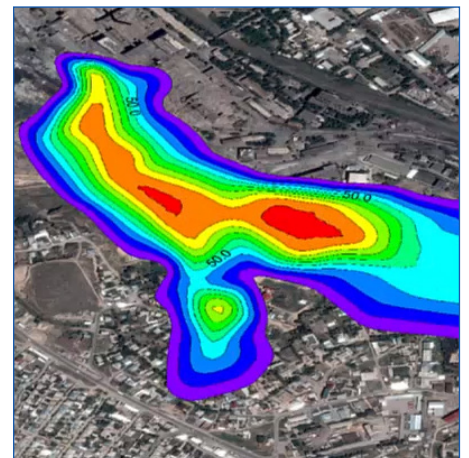
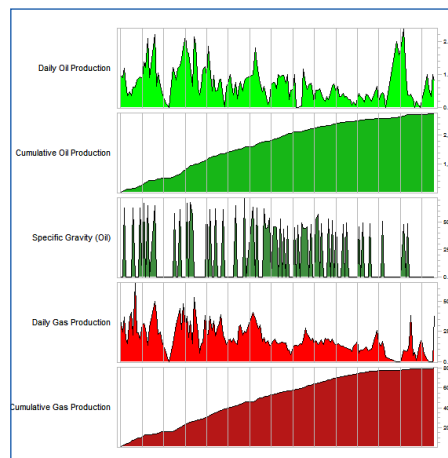
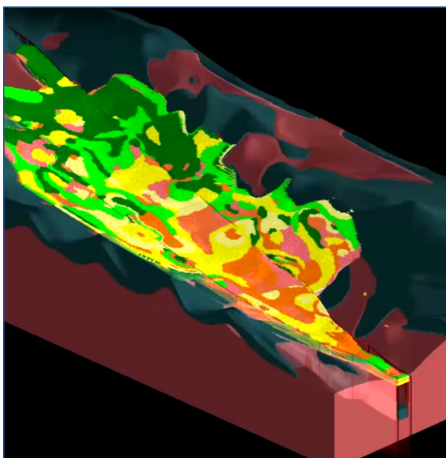
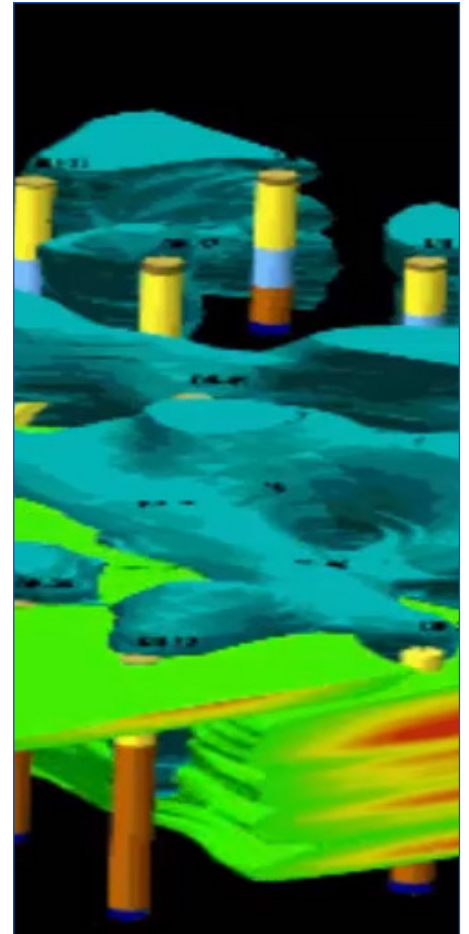
## What's New

- 64-bit processing for larger, higher-resolution models
- Multi-threading for faster modeling
- 3D Faulting for solid (block) models, surface models and stratigraphy models
- New QuickMap view for borehole locations
- SQL Lite (default) or MDB for local databases
- Production table in database and full suite of well production diagrams
- GeoBody filter for grouping block model values
- Data imports—Excel, LAS, LogPlot, IHS, KGS, Tobin, other databases
- Stratigraphic contacts from digital elog data or raster logs

## System Requirements

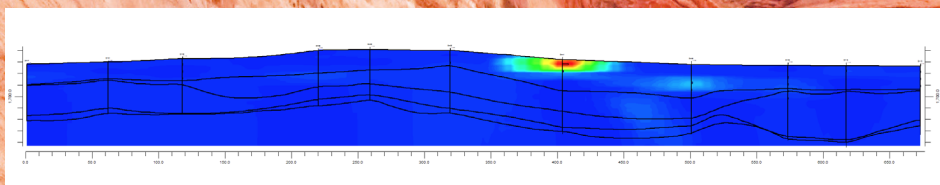
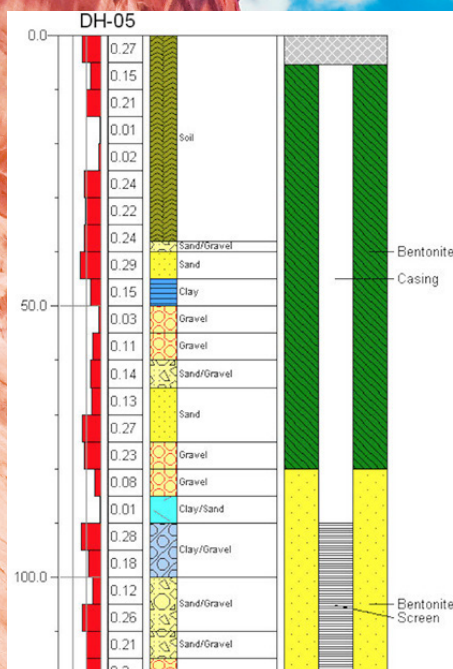
- Windows 7, Windows 8, or Windows 10
- RockWare Network License Administrator (for Network license) requires Windows Server 2003 or higher
- 64-bit operating system
- 2+ GB RAM

Download free trial at [rockware.com](http://rockware.com)





# RockWorks 17®–Environmental



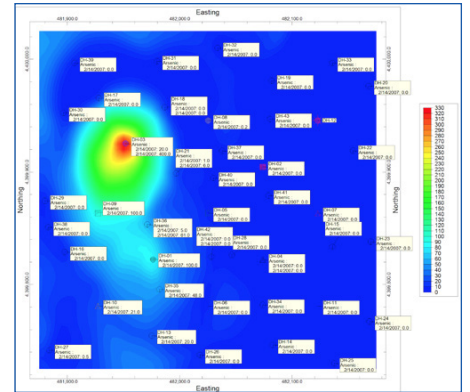
Borehole logs, cross sections, concentration maps, plume models, geology models, time-based animations, geochemistry diagrams and more. RockWorks will help the environmental professional along the path from site characterization to remediation planning and execution.





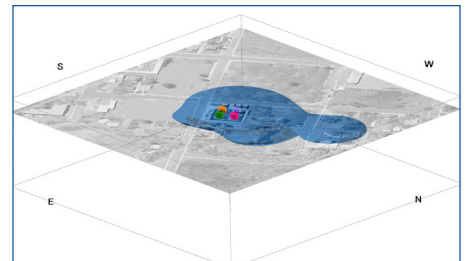
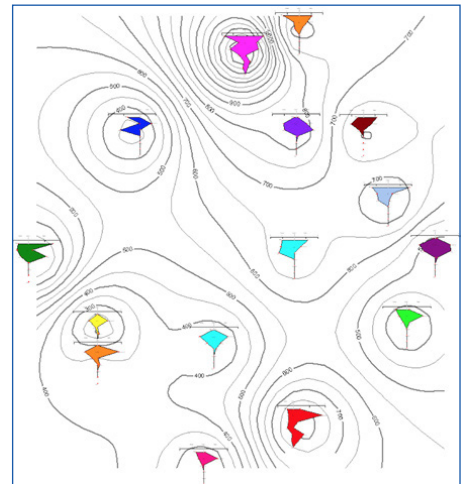
## Mapping Tools

- Borehole location maps with detailed data labels
- Contaminant concentration maps with lines and color fills, custom color tables, date filters
- Plan- and surface-based slices from 3D models
- Stiff diagram maps
- Time-graph maps for user-selected analytes
- Potentiometric surface maps
- Flow maps in 2D and 3D
- Coordinate systems/conversions: lon/lat, UTM, State Plane, local, custom



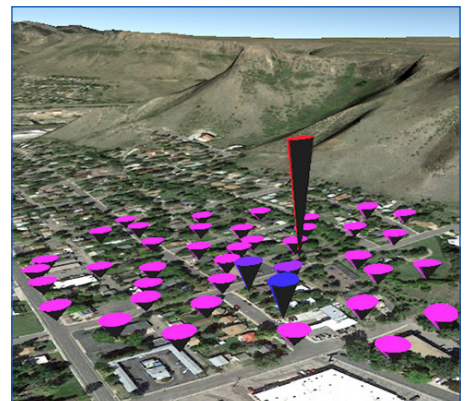
## Borehole Database Tools

- Cross sections: multi-panel projected and hole to hole, with borehole logs and/or interpolated panels
- Correlations: model-based and "EZ" panels, snapping tools for hand-drawn correlations
- Borehole logs in 2D and 3D
- 3D fence diagrams
- Surface modeling of stratigraphic layers and water levels
- Plume modeling of analytical data, with display as voxel or isosurface diagrams, 2D plan and section slices
- Solid modeling of lithologic materials, geophysical and geotechnical measurements
- Volume reports of lithologic and stratigraphic models, contaminant extraction models
- Bulk data imports from Excel, text, LAS, other databases



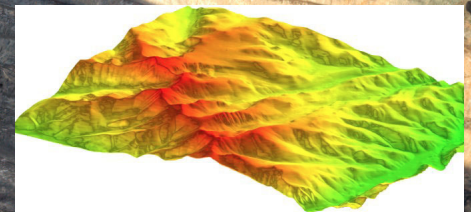
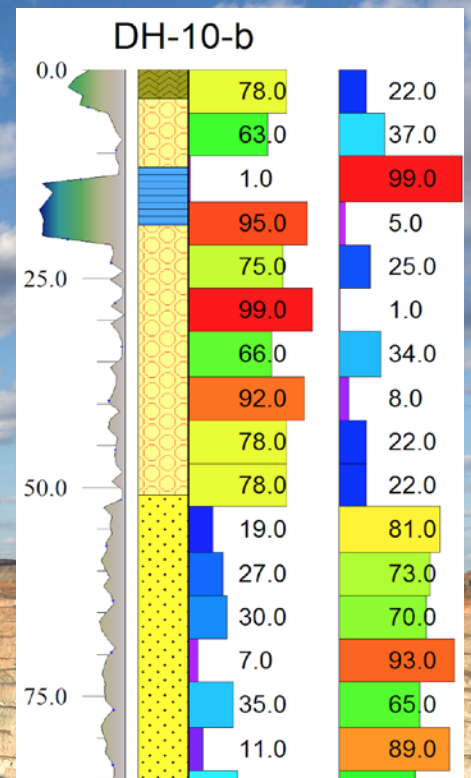
## Other Tools

- Time-based animations
- Piper and Durov diagrams with TDS circles, Stiff diagrams for multiple samples
- Water level drawdown diagrams and surfaces
- 2D editing tools: contour lines, text, shapes, legends, images
- Composite scenes in 3D with maps, logs, surfaces, solids, panels, surface objects
- Page layout program for small to large format presentations and posters
- Exports to GIS Shapefiles, CAD DXF, raster formats, Google Earth
- Image import and rectification
- Program automation
- Google Earth output directly from data: points, cones, lines, polygons, images, flyovers





# RockWorks 17®–Mining



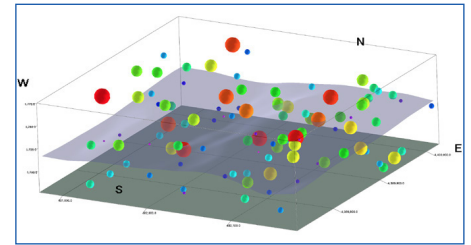
Mining professionals rely on RockWorks point and contour maps, 2D and 3D log displays, projected sections, block model interpolating and editing, detailed volume calculations, and import/export tools in both exploration and production phases of their projects.





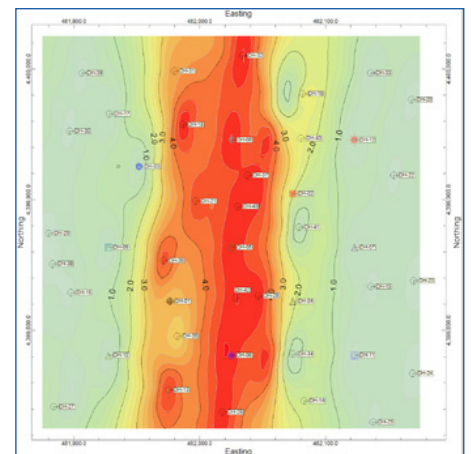
## Mapping Tools

- Drillhole location maps with detailed data labels
- Assay, concentration maps with lines and color fills, custom color tables
- 3D surface displays: topographic surfaces, stratigraphic units
- 3D point maps
- Geology maps: plan or surface-based slices from block models
- Multivariate maps: pie chart, bar chart, starburst, spider maps
- Coordinate systems/conversions: lon/lat, UTM, State Plane, local, custom



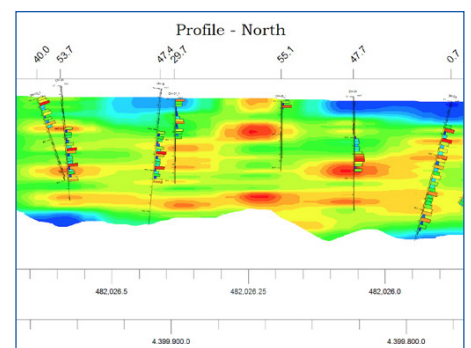
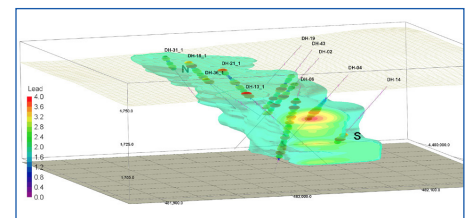
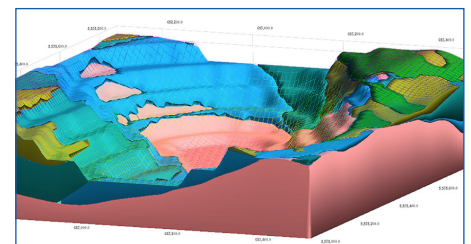
## Borehole Database Tools

- Projected cross sections showing drillhole orientation
- Correlation panels: stratigraphy, lithology, grade/concentration, geophysics
- Drillhole logs in 2D and 3D with lithology, stratigraphy, bargraphs/disks, curves, color intervals, text
- Block model interpolation from XYZG point or drillhole data, display as voxels, isosurfaces, fence diagrams, 2D plan and section slices
- Surface model interpolation of stratigraphic units
- Downhole fracture display and modeling—closest fracture and closest fracture intersection
- Volume reports of lithologic, stratigraphic models
- Data imports: Excel, LAS, acQuire, Newmont, other databases



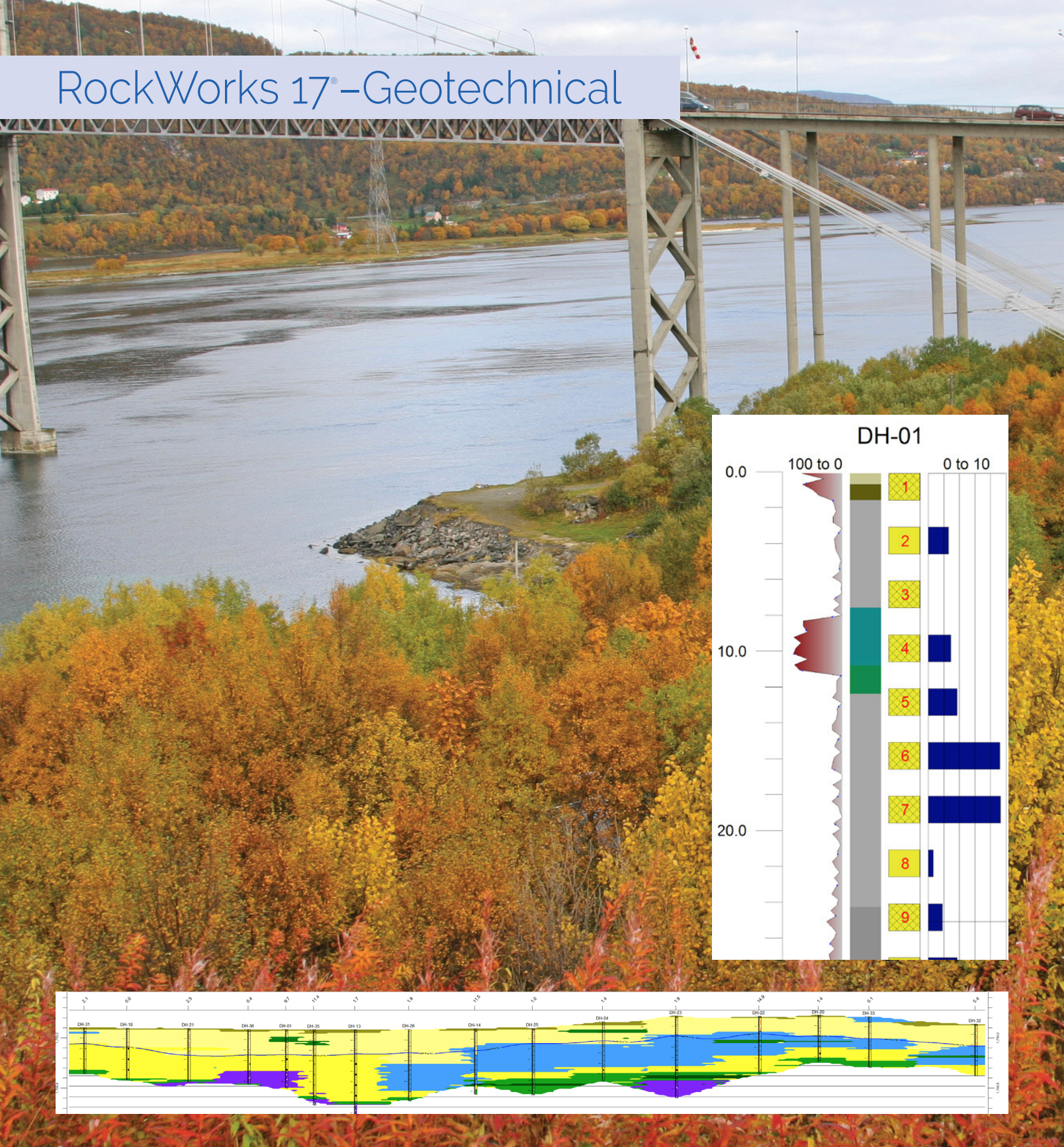
## Other Tools

- Block model editor: 3D voxel/polyhedron editor or slice-based
- Volume calculations: grade statistics by level, extraction reports, GT calculators, floating cones model extraction tools
- Stereonet and rose diagrams, stereonet and rose maps
- Ternary diagrams, frequency histograms for source data and models
- Graphic output: 2D and 3D output to RockWorks, Google Earth
- 2D editing tools: contour lines, text, shapes, legends, images
- Composite scenes in 3D with maps, drillhole logs, surfaces, blocks, panels
- Page layout program for small to large format presentations and posters
- Exports to GIS Shapefiles, CAD DXF, raster formats, Google Earth
- Image import and rectification
- Program automation





# RockWorks 17®-Geotechnical



RockWorks offers geotechnical and civil engineers graphical and analytical tools for evaluating construction and excavation sites. Create borehole logs and cross sections, dozens of different types of maps, structural diagrams, geological/geotechnical/fracture/ color models, volume reports and more.





## Mapping Tools

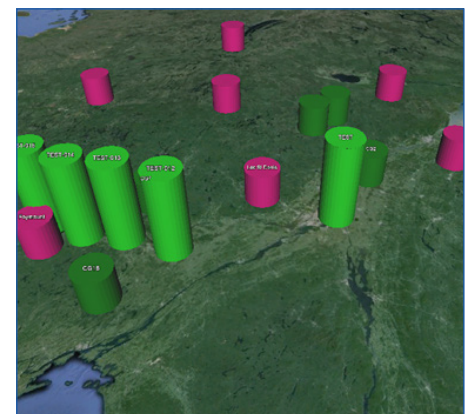
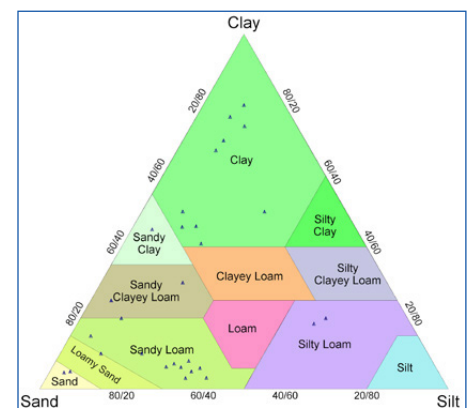
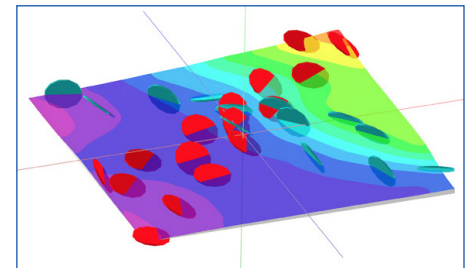
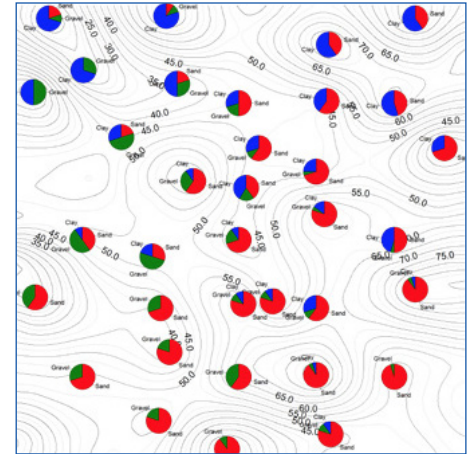
- Multiple components in piechart, spider maps
- Point maps with detailed data labels
- Topographic contour maps with lines and color fills, custom color tables
- 3D surface displays
- Strike and dip maps in 2D and 3D
- Coordinate systems/conversions: lon/lat, UTM, State Plane, local, custom

## Borehole Database Tools

- Cross sections: multi-panel projected and hole to hole, with borehole logs and/or interpolated panels
- Correlations: model-based and "EZ" panels, snapping tools for hand-drawn correlations
- Borehole logs in 2D and 3D
- 3D fence diagrams
- Surface modeling of stratigraphic layers and water levels
- Solid modeling of lithologic materials, fractures, and geophysical, geotechnical, geochemical data, with display as voxel or isosurface diagrams, 2D plan and section slices
- Geology maps: plan slices from stratigraphy or lithology models
- Volume reports of lithologic, stratigraphic, excavation models
- Fracture display and modeling, stereonet maps, rose diagram maps
- Munsell colors for display in logs and interpolation into color models
- Data imports: Excel, AGS, Colog, Fugro CPT, gINT, LAS, Penetrometer, other databases

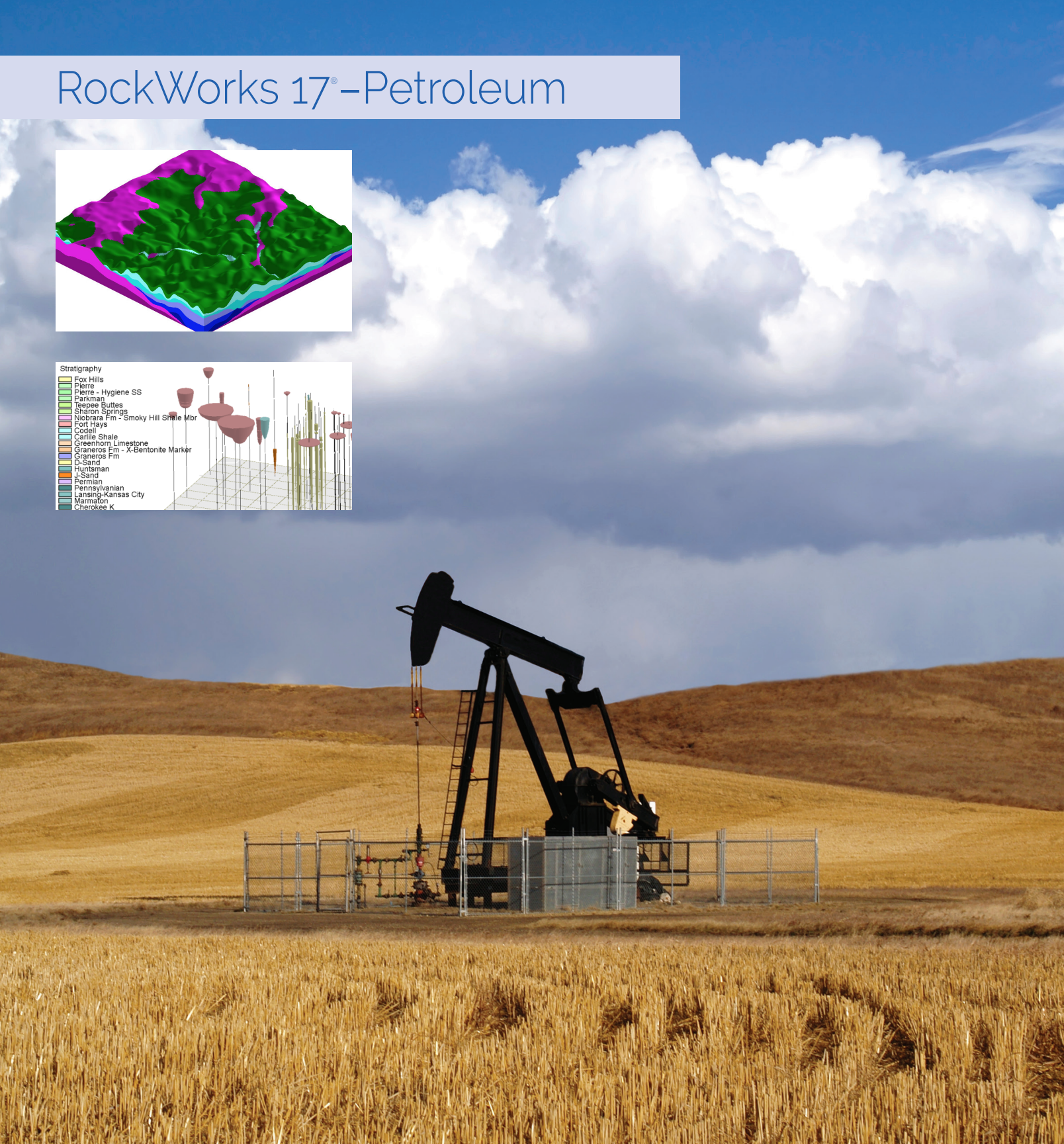
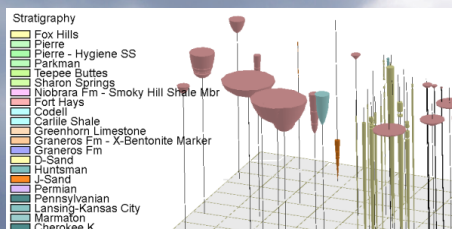
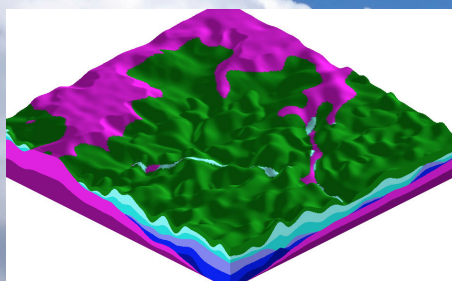
## Other Tools

- Sieve diagrams, ternary diagrams with classification overlays
- Stereonet and rose diagrams
- Slope/aspect analysis on grid models
- Predictive tools: lithology materials from curves, interval data (porosities, strength, cohesion) from lithology
- 2D editing tools: contour lines, text, shapes, legends, images
- Composite scenes in 3D with maps, logs, surfaces, solids, panels, surface objects
- Page layout program for small to large format presentations and posters
- Exports to GIS Shapefiles, CAD DXF, raster formats, Google Earth
- Image import and rectification
- Program automation
- Google Earth output directly from data: points, cones, lines, polygons, images, flyovers





# RockWorks 17®–Petroleum



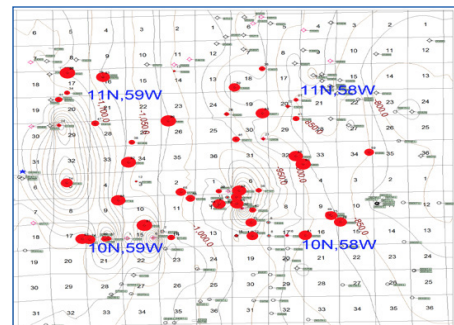
RockWorks gives the petroleum geologist the tools to get the job done: well spotting, mapping (bubble, structure, isopach, land grid, log maps), cross sections, stratigraphic modeling, reservoir modeling and much more.





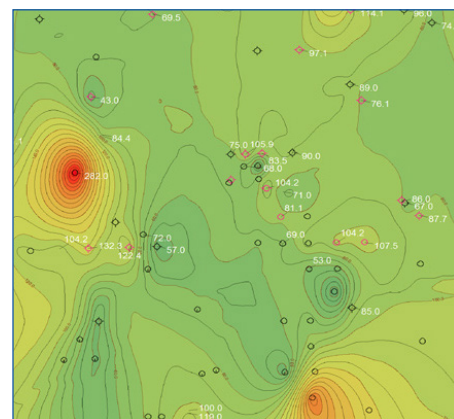
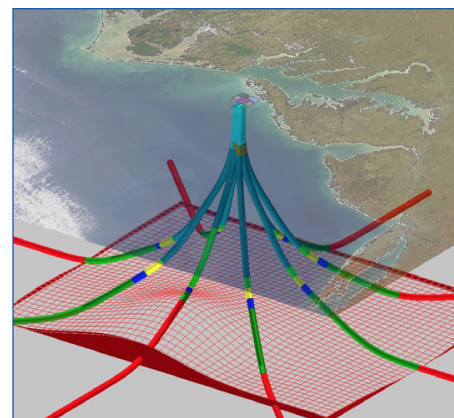
## Mapping Tools

- Structure and isopach maps: contour maps with lines and color fills, custom color tables
- 3D surface displays
- Bubble maps of any well data (production, etc.)
- Well and lease spotting from Range, Township, Section descriptions
- Land grid and lease maps with section boundaries
- Coordinate systems/conversions: lon/lat, UTM, State Plane, local, custom
- Well location maps: customized symbols (e.g. well status), plan-view horizontal well traces
- Gridding algorithms: kriging, triangulation, inverse-distance, trend polynomial
- Grid model tools: filters, math operations, editor, imports and exports



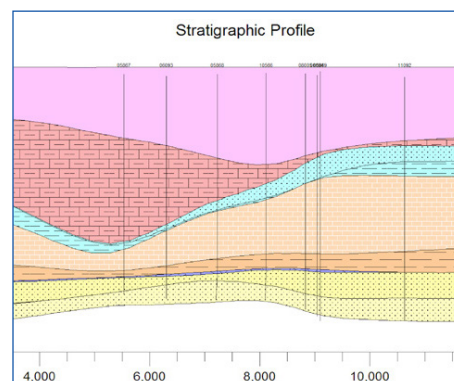
## Well Database Tools

- Cross sections: hole to hole and projected
- 3D fence diagrams
- Correlations: model-based and "EZ" panels
- Horizontal and vertical wells: 2D and 3D, flexible log layout
- Stratigraphic modeling of all/selected formations
- Solid modeling of lithologic, geophysical, geotechnical, geochemical data, with display as voxel or isosurface diagrams
- Geosteering: optimal well paths based on target formations, lateral and 3D displays
- Well database for well locations and miscellaneous well data, formation contacts, raster images, geophysical data, lithology, well construction and production
- Data imports—Excel, LAS, LogPlot, IHS, KGS, Tobin, other databases
- Stratigraphic contacts from digital elog data or raster logs



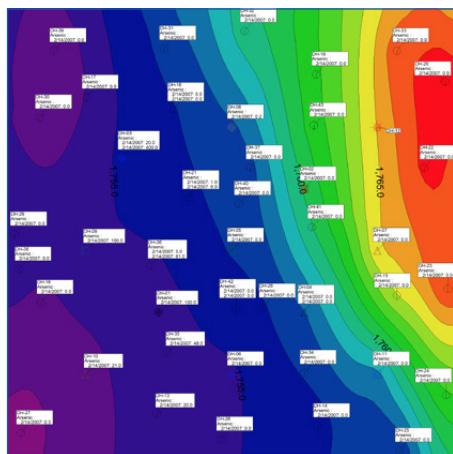
## Other Tools

- Structural geology diagrams
- Graphic output: 2D and 3D output to RockWorks, Google Earth
- 2D editing tools: contour lines, text, shapes, legends, images
- Snapping tools for hand-drawn correlations
- Composite scenes in 3D with maps, logs, surfaces, solids, panels, surface objects
- Page layout program for small to large format presentations and posters
- Exports to GIS Shapefiles, CAD DXF, raster formats, Google Earth
- Image import, rectification, depth-registration
- Program automation





# RockWorks17® Feature Levels

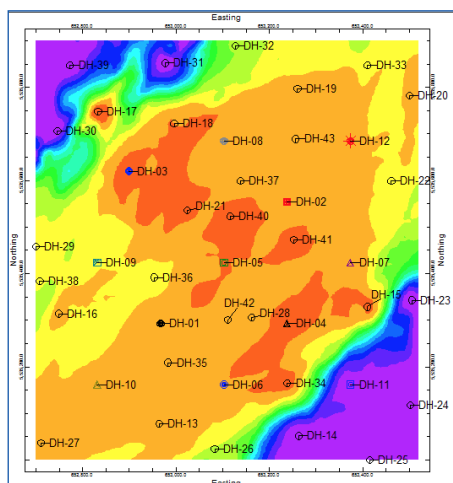


RockWorks17 is offered with three different feature levels: Basic, Standard, and Advanced.

All three levels include the Utilities portion of the RockWorks program. The Utilities has a row-and-column datasheet and numerous tools for mapping XYZ data, modeling XYZG points, creating stereonet and rose diagrams, creating Piper, Stiff and Durov plots, and much more. This is the general RockWorks “toolbox.”

All feature levels also include the three Graphic Output programs: RockPlot2D, RockPlot3D and ReportWorks.

All three levels also include the Borehole Manager and its local database for storing and managing borehole-based data.



## RockWorks Basic

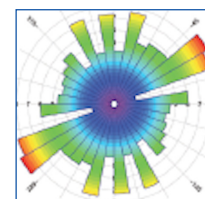
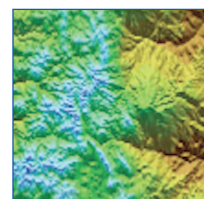
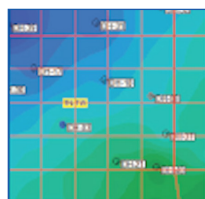
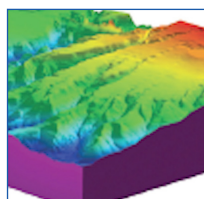
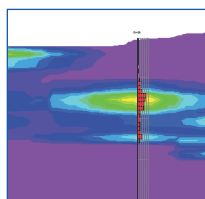
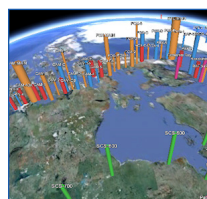
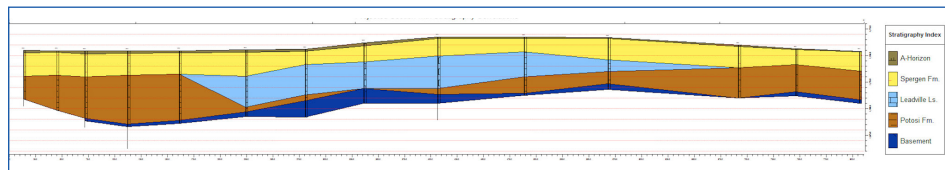
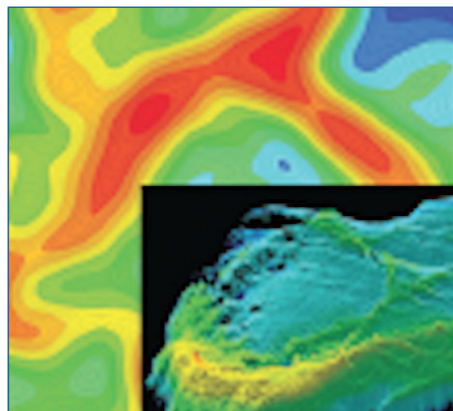
With Basic, the borehole processing tools are limited to observed data—no modeling: Borehole location maps, 2D and 3D strip logs, and striplog profiles and cross sections. Simple correlation panels are offered for Stratigraphy, I-Data and P-Data in 2D section diagrams.

## RockWorks Standard

With Standard, you get all of the borehole modeling tools for the subsurface data offered in the Lithology, Stratigraphy, I-Data, T-Data, P-Data, Fractures, Aquifers and Vectors menus, and all of the 2D and 3D diagrams and maps these menus contain.

## RockWorks Advanced

With Advanced, you can connect to a SQL-Server database on a network, run RCL scripts to automate program processes, apply 3D faults to surface and solid models. You also have access to the RockWare GIS Link, to the tools in the well Production menu, and can import commercial PLSS land grids.



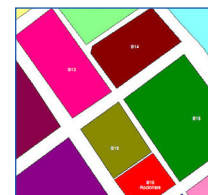
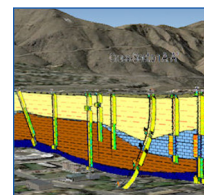
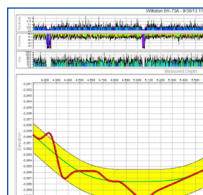
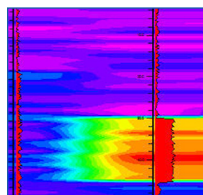
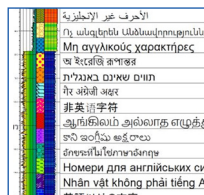
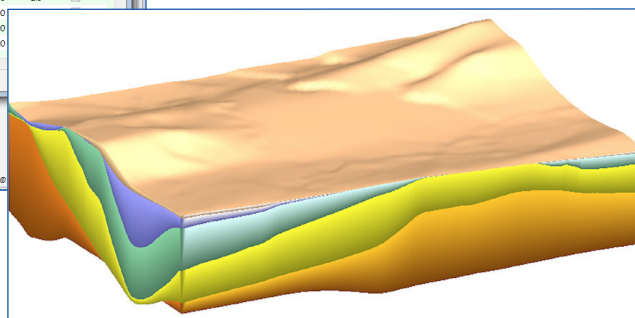
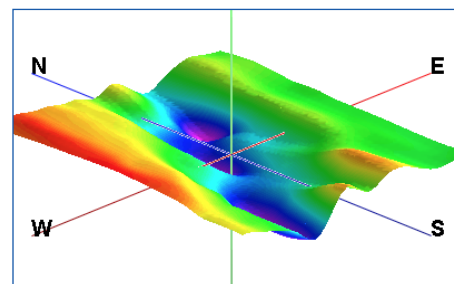
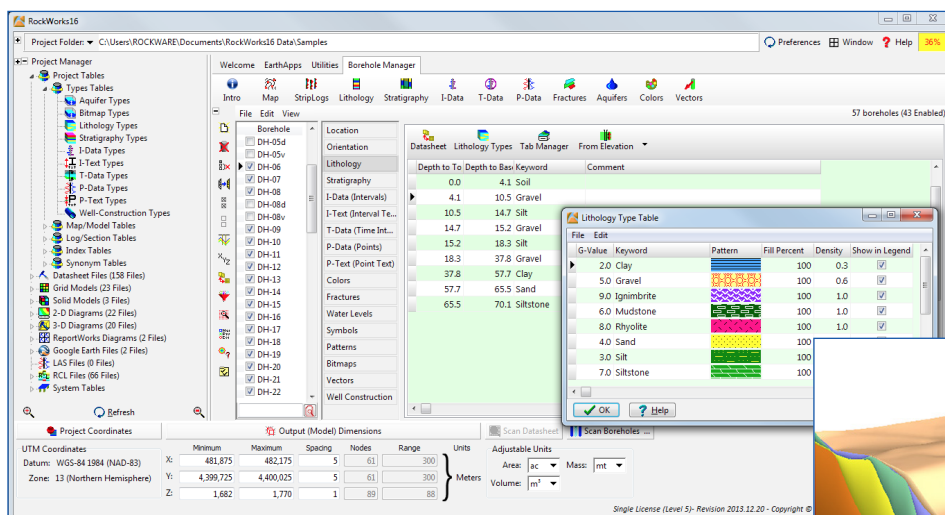


# RockWorks17® Pricing



## RockWorks Feature Levels

License Level	Basic	Standard	Advanced
Single License price starting at	\$1,500	\$3,000	\$5,000
Network License price starting at	\$2,625	\$5,250	\$8,750
Annual Rental price	\$650	\$1,300	\$2,200
Academic Classroom License (10 user)	\$550	\$1,000	\$1,600
Utilities (including EarthApps)	✓	✓	✓
Logs and Sections	✓	✓	✓
Borehole-Based Modeling	—	✓	✓
SQL Server; Automation, 3D Faulting	—	—	✓







**RockWare®**

Since 1983

#### **US Office**

2221 East Street  
Golden CO 80401  
303.278.3534  
800.775.6745  
F: 303.278.4099  
rockware.com

#### **European Office**

Vicolo dei Saroli 1  
6944 Cureglia Switzerland  
+41 91 967 52 53  
F: +41 91 967 55 50  
rockware.com

Canadian Post Publications Agreement #40065056 Canadian Return Address DP GlobalMail 4960-2 Walker Rd Windsor Ontario N9A6J3 9

©2019 RockWare, Incorporated and its licensors. All rights reserved. RockWare is a registered trademark of RockWare, Incorporated. All product and names mentioned are the property of their respective owners. Surfer® is a registered trademark of Golden Software, Inc.

## RockWare Training

Too busy to teach yourself? Get up to speed fast with RockWare training courses.

- Courses offered for RockWorks and Surfer®.
- Focus on the software for two days—WITHOUT office interruptions.
- RockWare trainers are both software and industry experts.
- Courses cater to all levels and backgrounds.

### Workshops

Regional workshops are held across the globe and are open to anyone. Go to [rockware.com](http://rockware.com) for a Workshop Schedule.

### Custom Training

Custom courses can be held onsite in your office, or via the web in an online meeting. Courses can follow a standard curriculum or can be tailored to address client-specific problems and needs.

Email [training@rockware.com](mailto:training@rockware.com) or visit [rockware.com](http://rockware.com) for pricing and additional information.