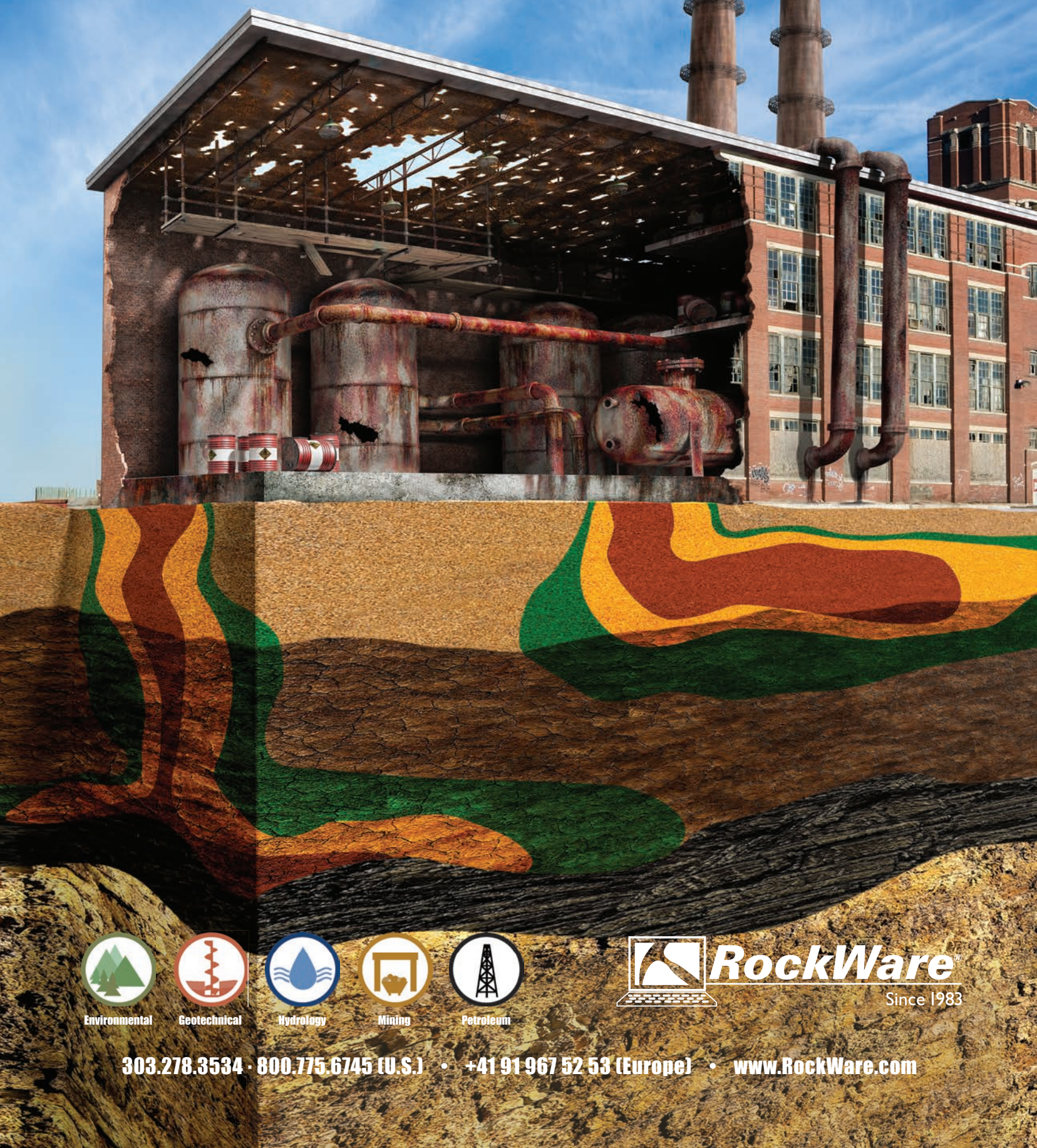


RockWare Software, Consulting & Training. For over 36 Years.



Environmental



Geotechnical



Hydrology



Mining



Petroleum



RockWare®

Since 1983

303.278.3534 • 800.775.6745 (U.S.) • +41 91 967 52 53 (Europe) • www.RockWare.com



An easy-to-use log plotting program with a flexible log layout. Plot single-page logs for shallow borings or multi-page/continuous logs for deep wells. LogPlot has been widely used in the environmental, geotechnical, petroleum, and mining industries since 1983.

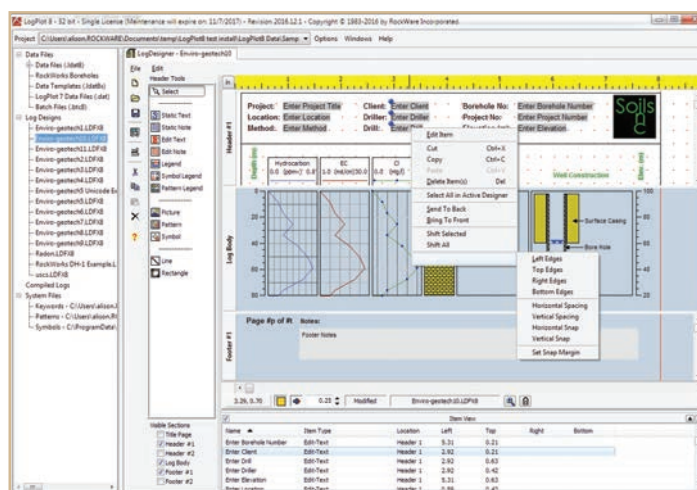
Download a trial version at www.rockware.com

Single **Network**
\$899 **\$1,575**

The Log Designer

The Log Designer allows you to quickly design borehole and well logs and modify existing design templates.

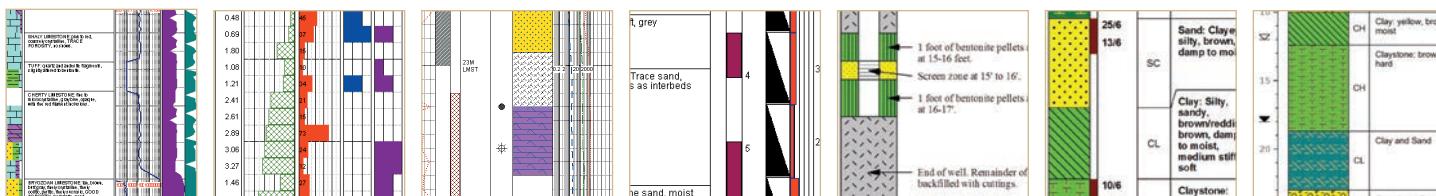
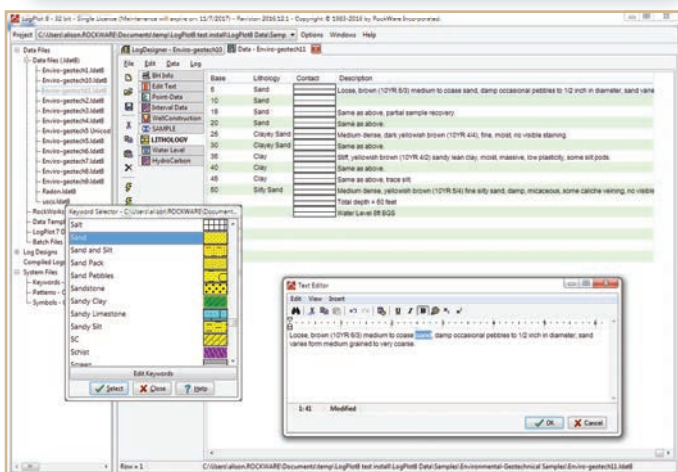
- Easy to use, with point, click, multiple-select and alignment capabilities
- Multi-pane re-vamped design window displays headers, footers, and log body (NEW)
- Two header and footer designs, full page report header
- Well information linking between data file and header/footer fields
- Macros for dates, page numbers and well locations
- Header/footer images, patterns, symbols, curve and bargraph legends, notes and text
- The log body can include any number and combination of columns, including lithology patterns and descriptions, cuttings percent columns, single and cross-plot curves, bargraphs, interval and point-based text, tadpoles, fracture traces (NEW), well construction, raster images, fillbars, water levels and other symbols, and scale bars



The Data Editor

Type, copy/paste and or import your log data into the Data Editor.

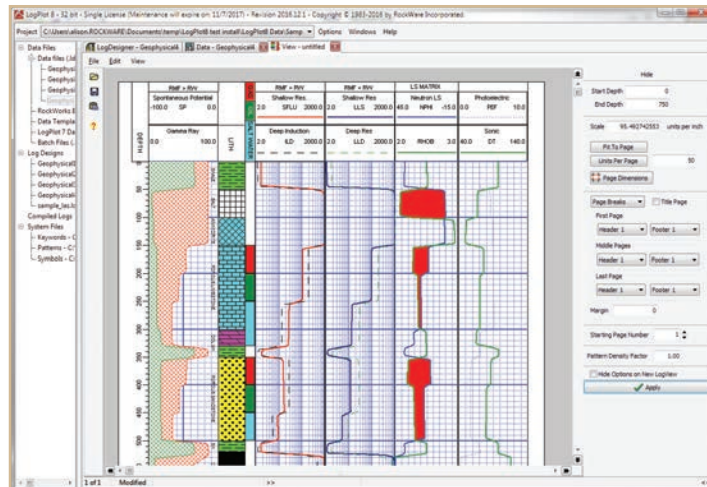
- Tabbed data sheets with a flexible layout, for easy data entry (NEW)
- Data sheets added on the fly, or automatically updated from the log design
- Double-click access to RockWorks borehole records, data can now be extracted from and written directly to the RockWorks17 database (NEW)
- Data import from LAS, Excel, DBF, AGS (NEW) and text
- Data export to LAS, Excel and RockWorks
- Data types: lithology/stratigraphy, interbeds, cuttings percentages, curves, interval and point-based data and text, general comments, header/footer text and notes, symbols, fillbars, downhole survey, tadpoles, fractures and well construction
- Easy linking of keywords ("sandstone") to graphic patterns and colors





The Log Viewer

- Create paginated or continuous logs
- Compile and display multiple logs at once
- Quickly re-display logs at any scale and adjust header/footer settings (NEW)
- Use your mouse to view depth/elevation at any point on the log
- Graphic export options include PDF (NEW), HTML (for display online), BMP, JPG, TIFF, and PNG
- Print your log, export an image of a single page, or export all pages in a single image



Other New Features in LogPlot8

New Patterns – The LogPlot Pattern Editor now supports the new pattern library with filled shapes and an unlimited number of items.

New Streamlined Interface – The LogPlot Data Editor, Log Designer and LogViewer have been redesigned for use on multiple monitors and to make the creation and modification of logs easier than ever.

New Log Data Tools

- New text formatting for text descriptions – bold, italic, underline, color, superscript, subscript or symbols
- New wavy and thick contact lines for display in Lithology pattern columns
- LogPlot now supports Unicode for non-Latin characters
- New tools add increased flexibility when defining data page names and columns
- New Data Templates to store customized data entry forms

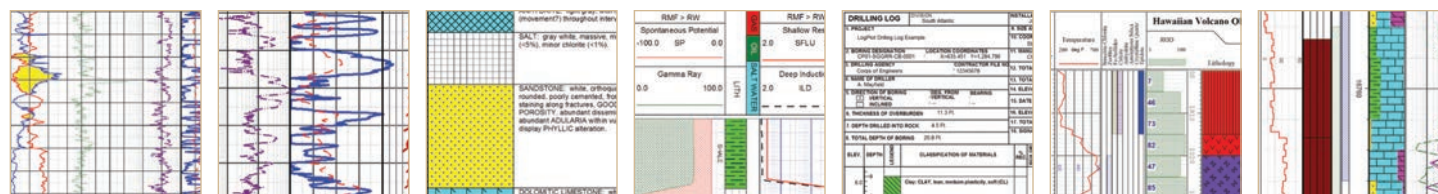
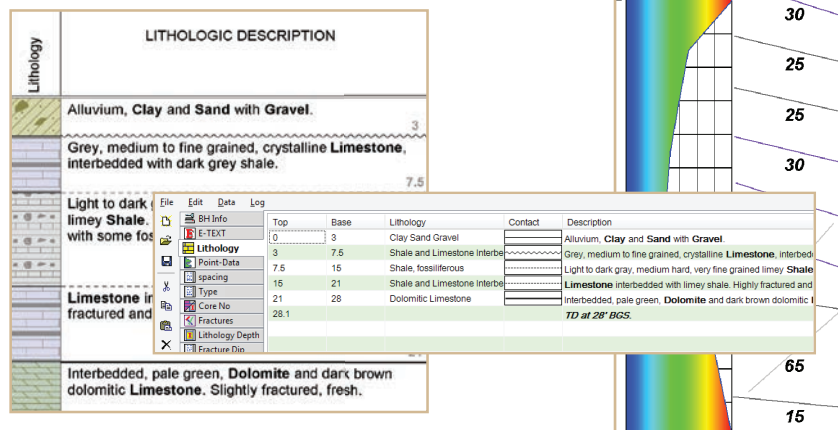
New Log Display Tools

- Header/Footer symbol and pattern legends
- Log body fracture columns and water level symbols
- Offset options for interval text columns
- New color gradient options for log body curves
- New static text macros
- Curve/bargraph headers that can move when the column location is adjusted
- Rotated Header text and notes

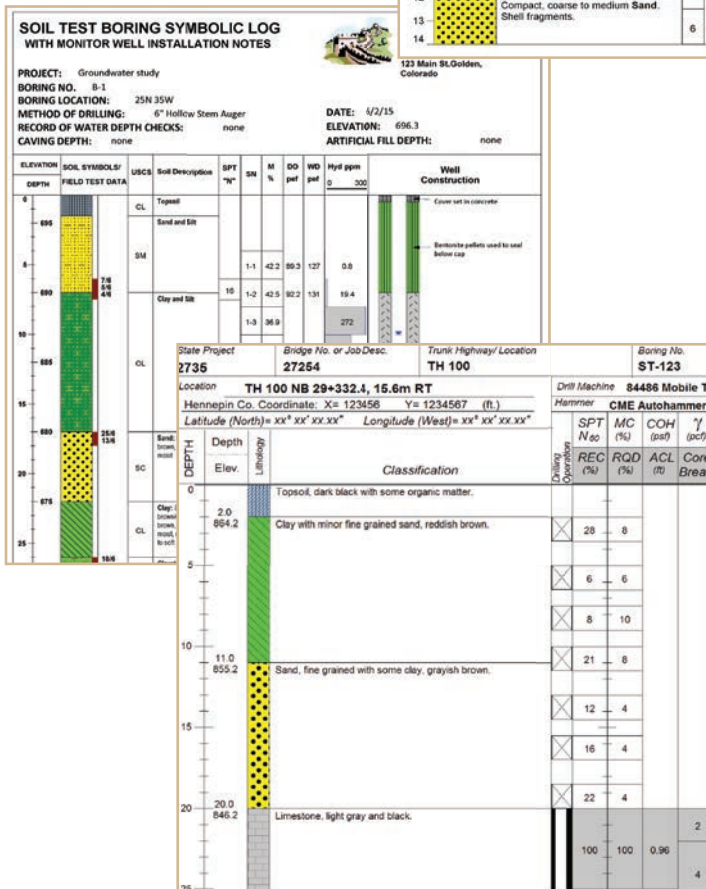
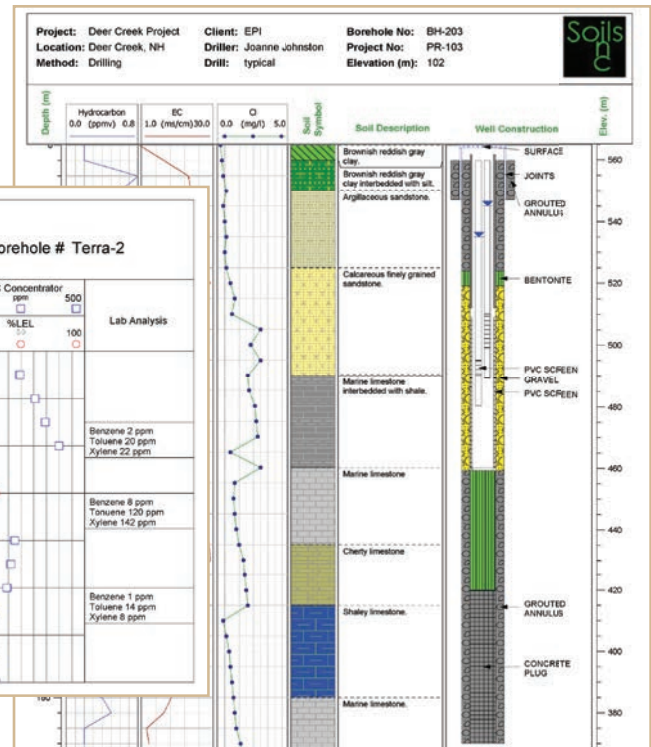


New Network License Manager

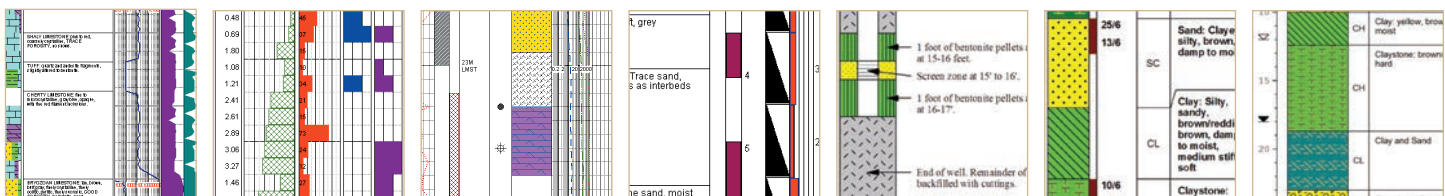
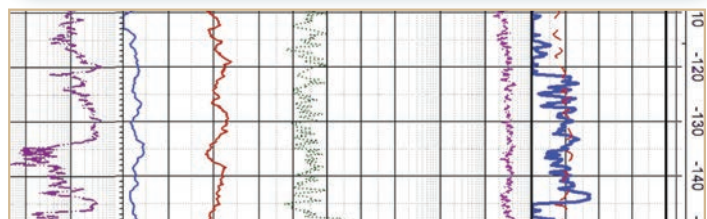
- Easy to set up
- Borrow a license for use in the field



- Soil and rock type symbols and descriptions
- Sample symbols, names, descriptions and data
- VOC data collected from MIP or other sampling devices
- OVA/PID data
- Borehole geophysics
- Detailed well construction diagrams, including nested wells
- Water level data
- Water and soil contamination information
- Blow counts, RQC and other geotechnical parameters



- Soil and rock type symbols and descriptions
- Blow counts, RQD and other geotechnical parameters
- Core symbols and data, including Recovery and RQD
- Fracture information, including spacing, orientation and aperture
- Sample symbols, names, descriptions and data
- Borehole geophysics
- Atterburg Limits
- Grain Size and sieve analysis results
- Water level data
- Water and soil contamination information
- CPT data, plotted as curves or colored intervals

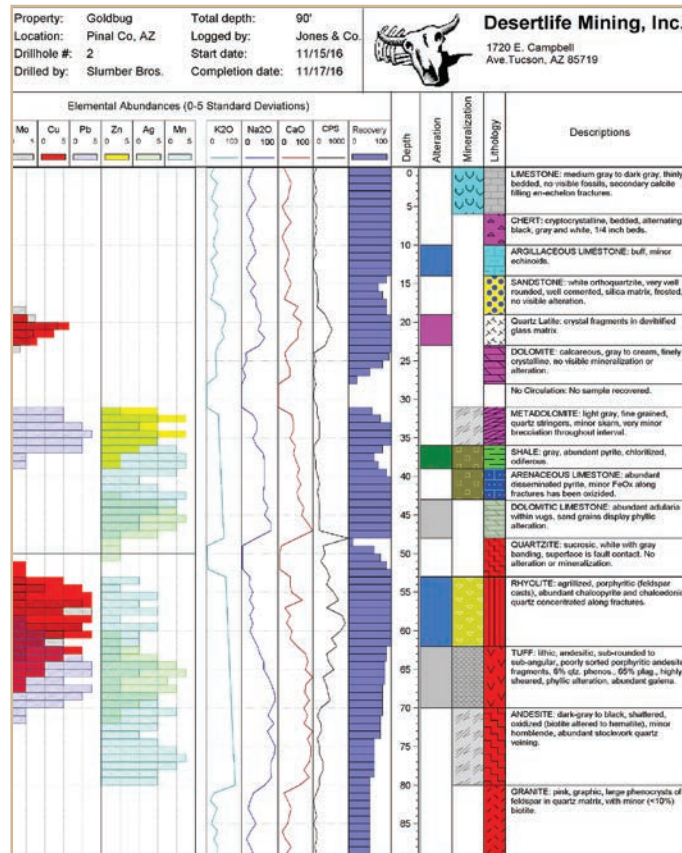
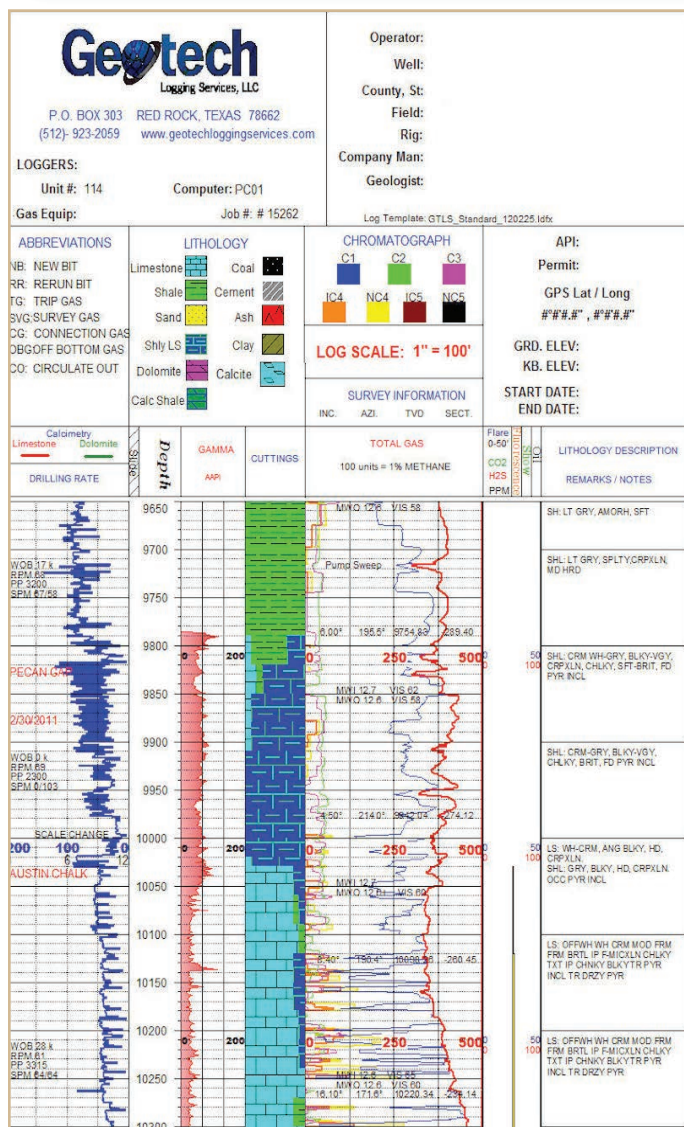


LogPlot® Continued



Mining

- Soil and rock type symbols and descriptions
- Core symbols and data, including Recovery and RQD
- Assay results
- Munsell Color Codes
- Fracture spacing, filling and orientation
- Alteration, mineralization and oxidation values
- Casing and well construction
- Water level data



Oil & Gas

- Well/borehole geophysics
- Gas curves
- Drilling rate, RPM and Weight on Bit
- Lithologic Cuttings data
- Formation tops and descriptions
- Casing and perforation diagrams
- Drill Stem Test intervals
- Fossils
- Core data, including intervals and fractures
- Pay zones and show intervals

