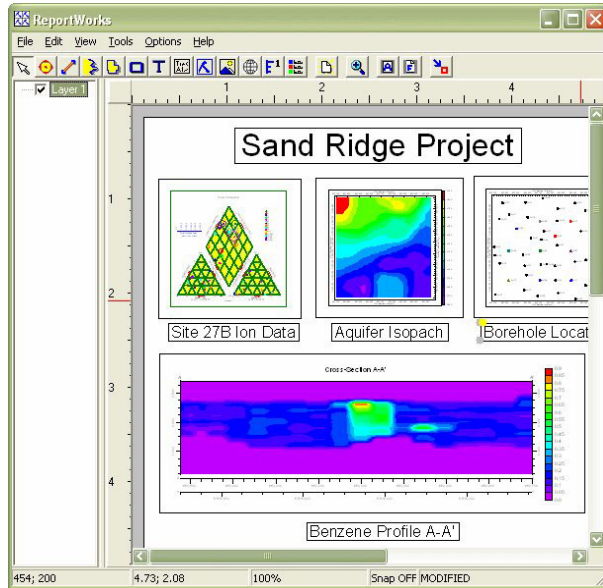


RockWorks2004 New Features

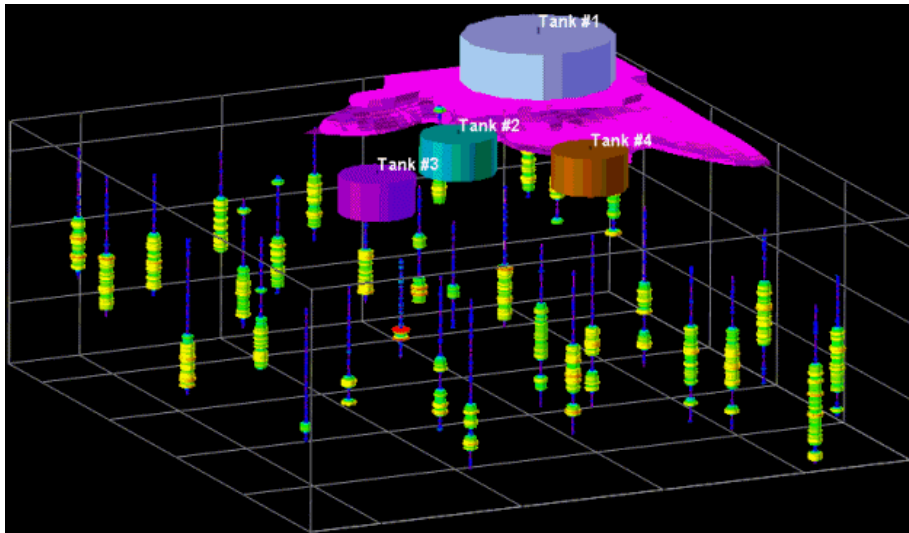
RockWorks2004 comes complete with numerous exciting new features. Among them are:

- New ReportWorks program for easy page layout of RockWorks diagrams, bitmaps, legends, logos and more.



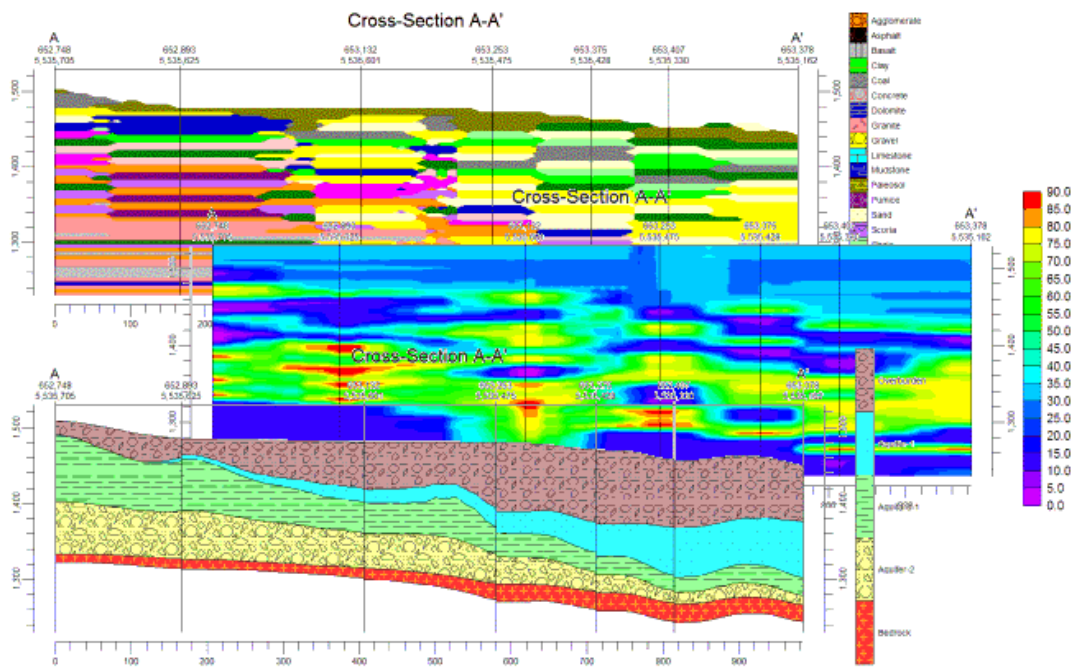
ReportWorks

- Easy time animation (solid model morphing) in RockPlot3D given a list of existing models, with AVI movie export



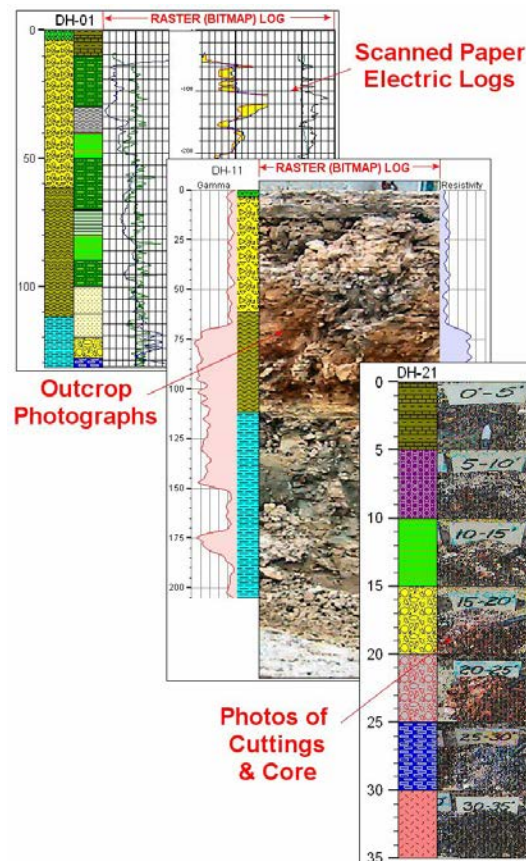
3D time animation

- Multi-panel profiles of lithology, stratigraphy, geochemistry, geophysics, geotechnical, fracture and aquifer data



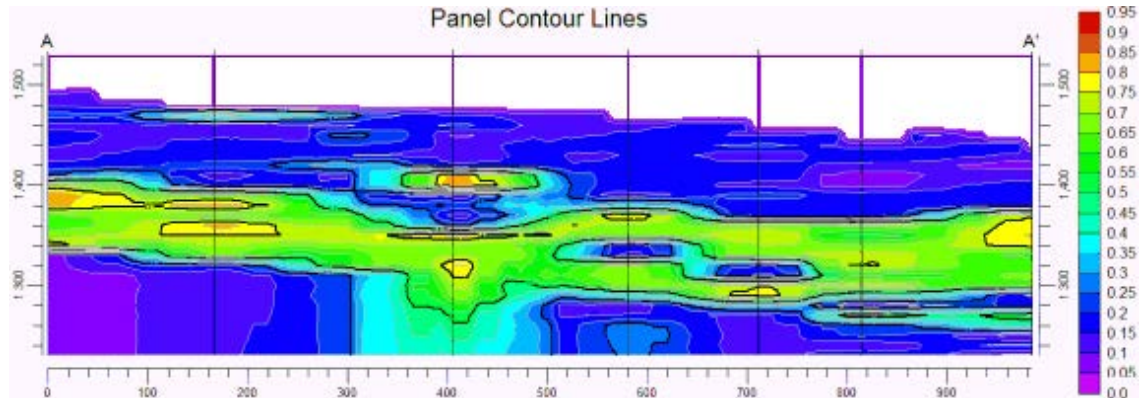
Multi-panel profiles

- Bitmaps (raster logs) may now be incorporated within 2D and 3D striplogs



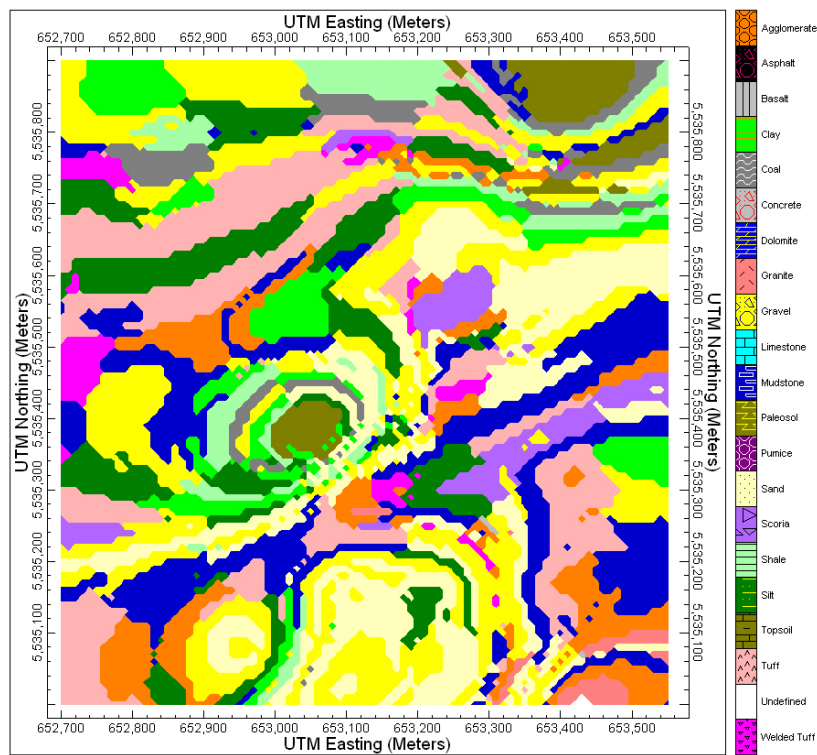
Include bitmaps (raster logs) in striplogs

- Include line contours on your color-filled geochemistry/geophysics or fracture profile and section panels



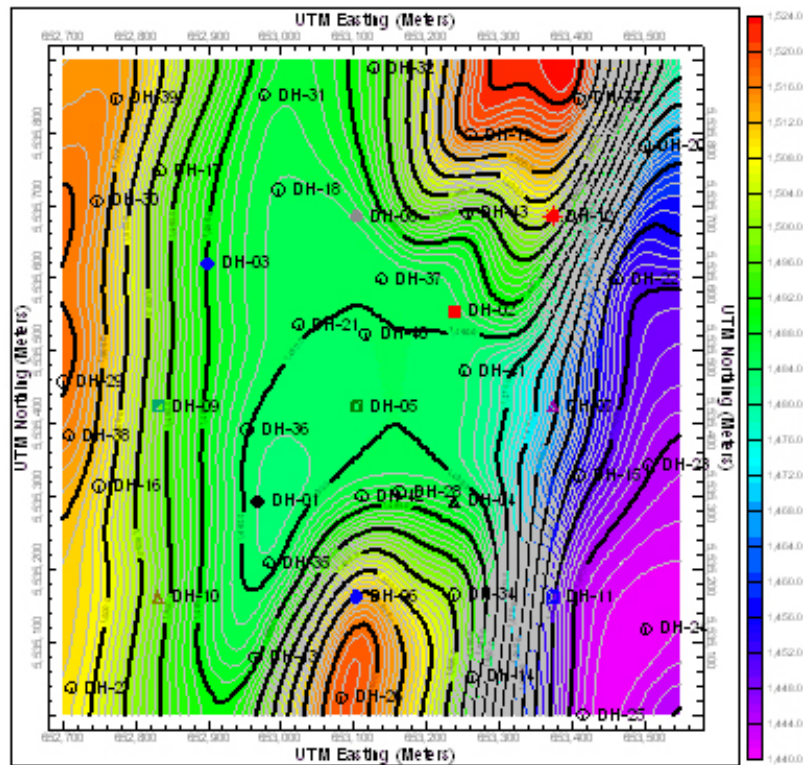
Line contours in vertical profiles

- Geology maps, representing lithology or stratigraphy models where they intersect a designated surface



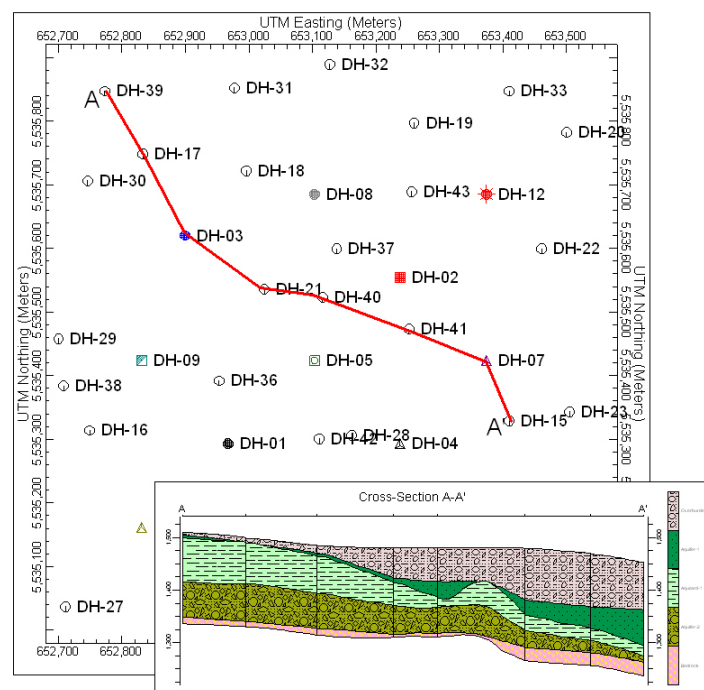
Geology map

- Borehole location maps may now include surface topography contours



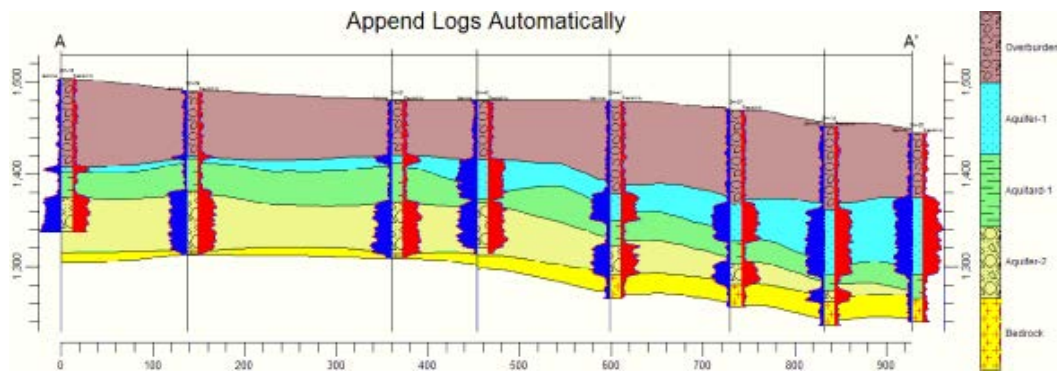
Contoured borehole location map

- Automatic section/fence location maps



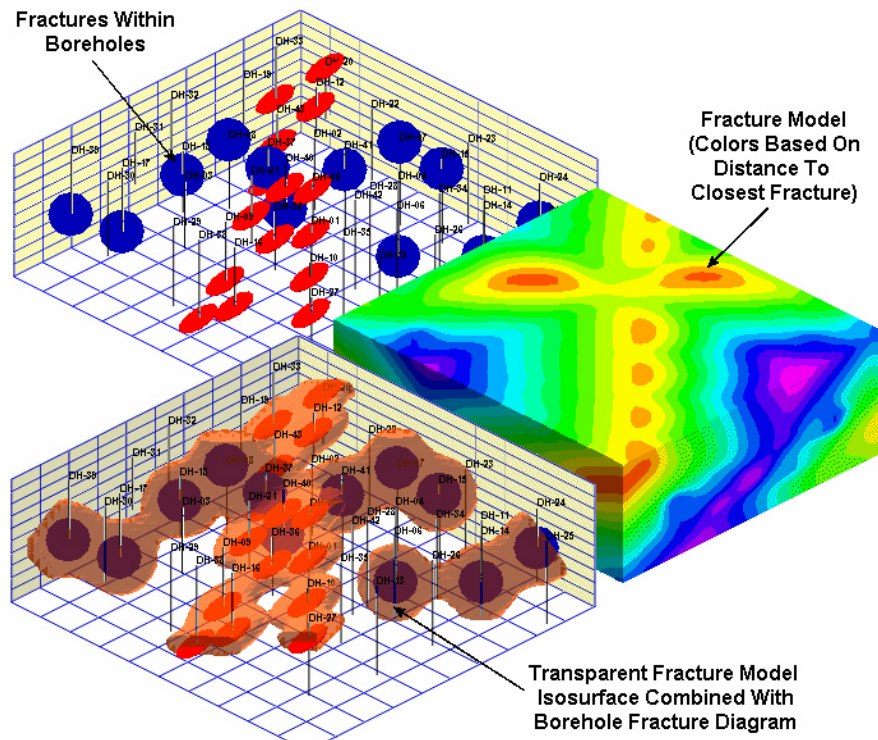
Automatic section/fence location map

- Disable contours at clipping boundaries
- Append strip logs automatically to all Borehole Manager solids, fences, profiles, and sections



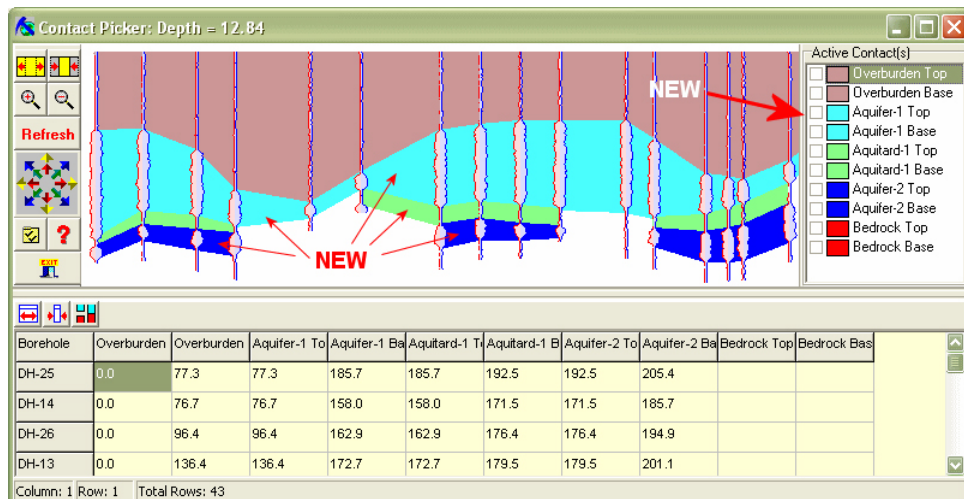
Append strip logs to solids, fences, profiles, and sections

- New fracture modeling: solids, profiles, sections and fences



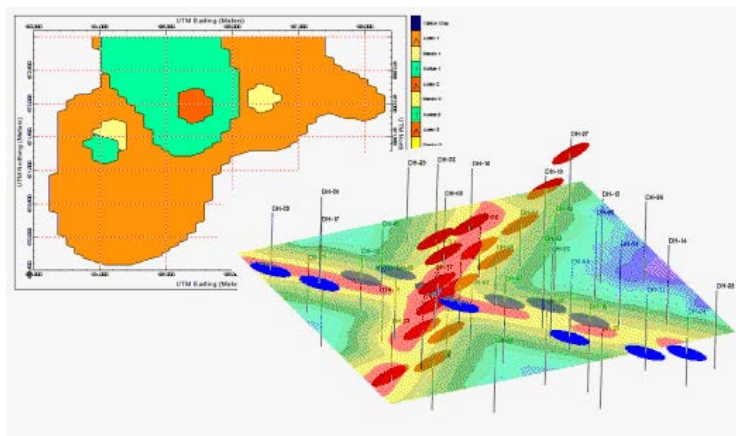
Fracture modeling

- Stratigraphic formation picker now draws section as contacts are selected



Strat formation picker draws automatic sections

- Right-click on any map location to retrieve data records
- 2D plan maps of lithology, stratigraphy, I-data, P-data and fracture models



2D plan maps of lithology, stratigraphy, I-data, P-data and fracture models

- Clip logs to display a user-specified elevation range
- Automatic project dimensions settings for maps, grids, solid-models and images
- Fully scriptable program operation (RCL - RockWorks Command Language) - all program operation
- Revamped XLS file transfer in and out of RockWorks - much faster processing
- Revamped bitmap handling in 2D and 3D images - much faster
- Faster borehole handling prior to processing with additional user control over temporary file creation
- Support of international number formats
- New multi-user licensing option
- Extensive help messages embedded within every menu
- Menu settings may now be saved and then restored after updating to a newer version. Menu setting reports may also be generated