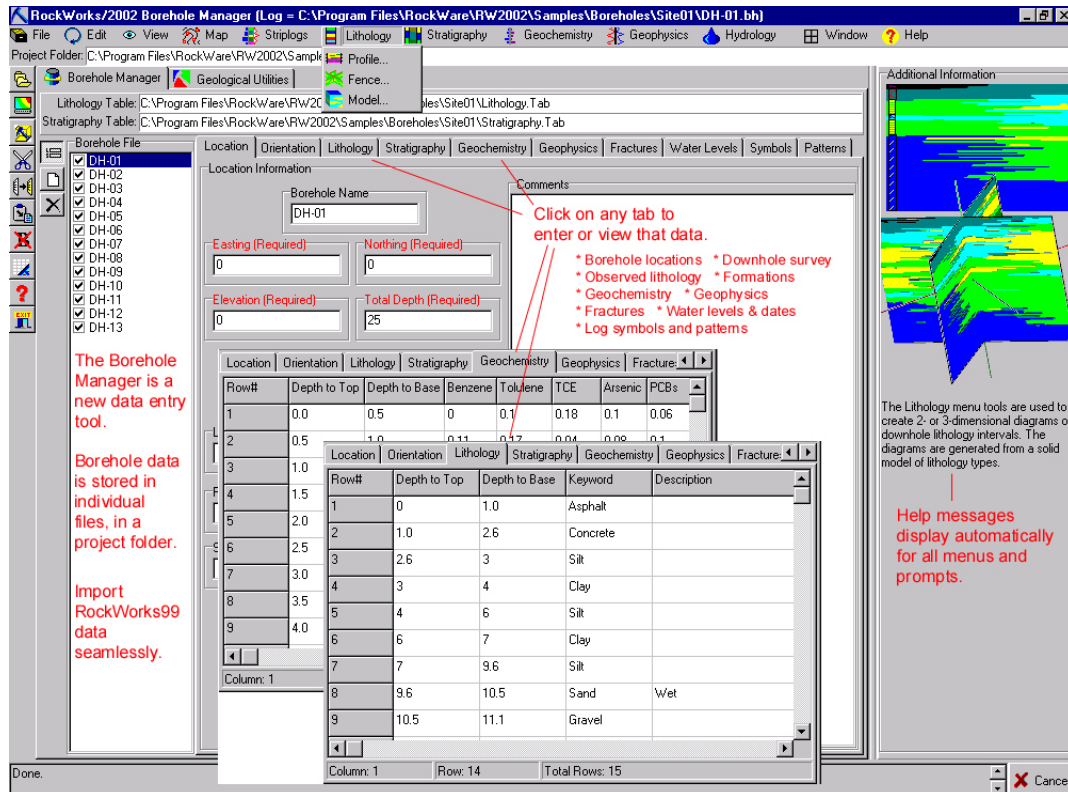


RockWorks2002 new features

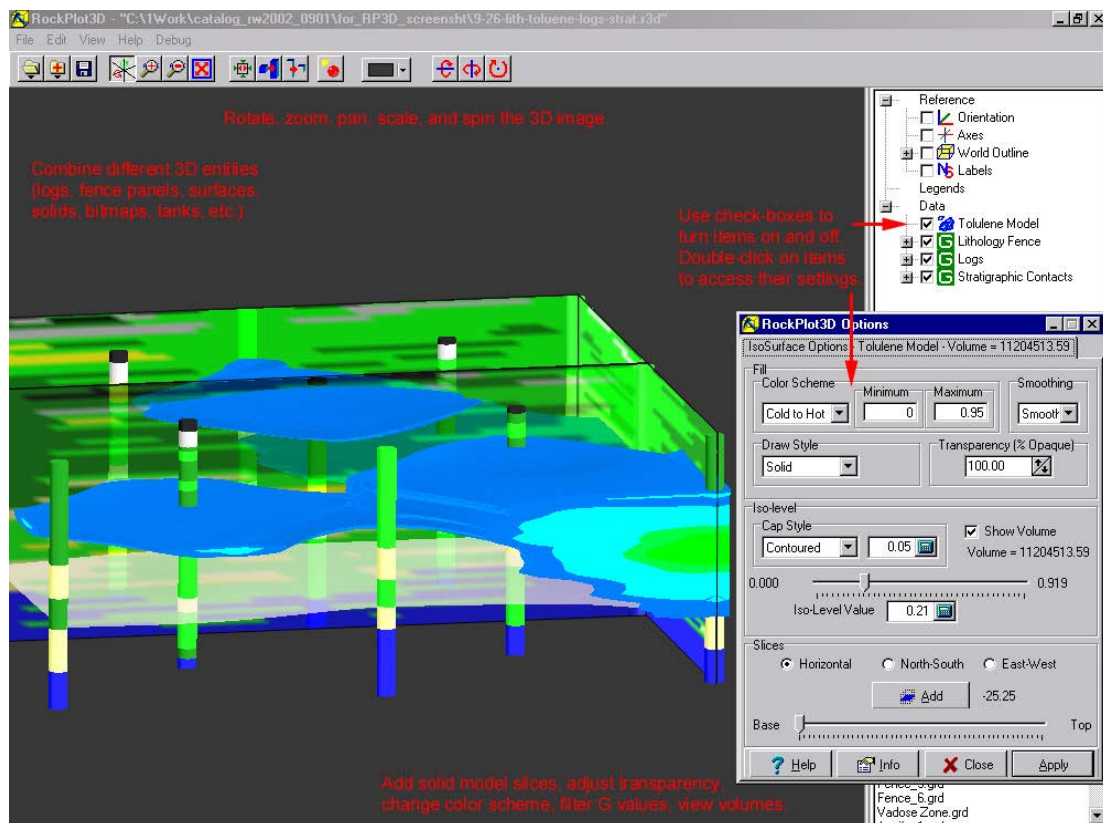
The new borehole data manager in RockWorks2002 is a data window used for entry and management downhole data: deviated drillhole surveys, lithology descriptions, stratigraphic formation names, geochemistry and geophysics data, fracture measurements, water level/aquifer data, log symbols and patterns.



New borehole data manager in RockWorks2002

RockWorks2002 new feature: Open GL 3D viewer

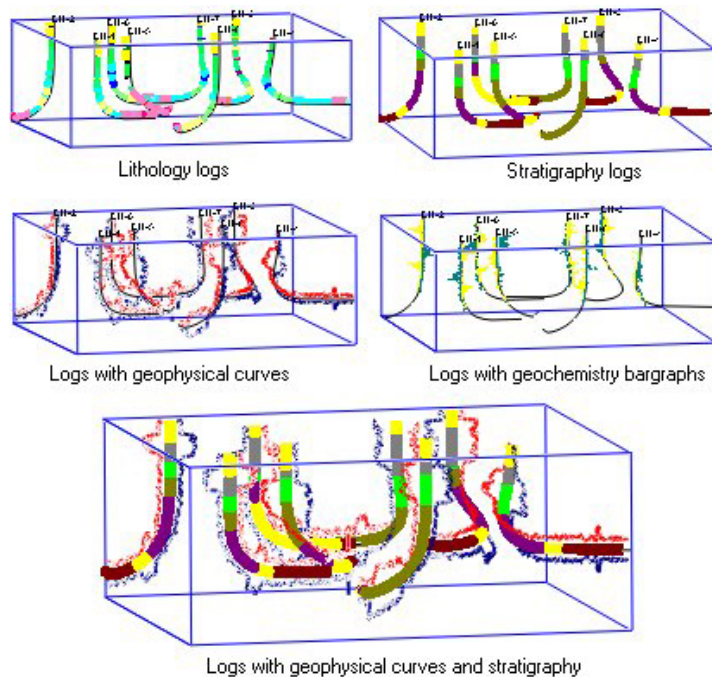
The all-new RockPlot3D OpenGL plotting windows displays 3-dimensional diagrams: 3D borehole logs, fence diagrams, stratigraphy models and solid models (contaminant plumes, petroleum reservoirs, orebody models), as well as 3D surfaces. Within you can append multiple diagrams as "layers", and turn individual layers on and off using check-boxes. Adjust lighting, dimensions, transparency, rotation, and zoom. Filter solid models by displaying iso-surfaces for given values. View sections through solid models to see zonation. Stratigraphic and solid model volumes are automatically indicated. Capture rotating images as .avi files.



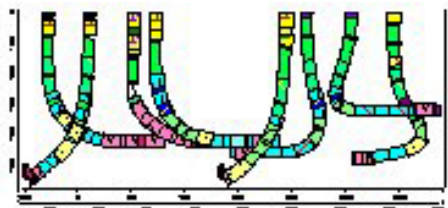
The new 3D OpenGL viewer

RockWorks2002 new feature: deviated drillholes

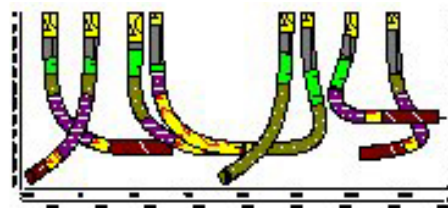
RockWorks2002 is now capable of displaying inclined and deviated drillholes.



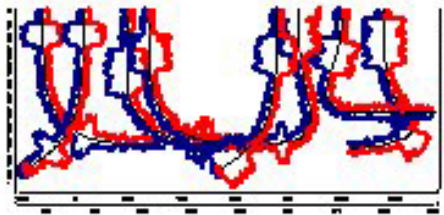
Sample deviated drillhole logs in 3D



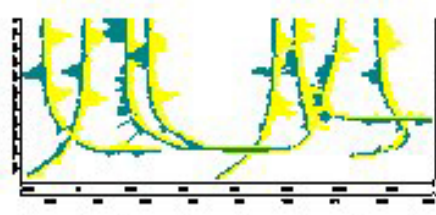
Lithology logs in projected section



Stratigraphy logs in projected section



Geophysical logs in projected section

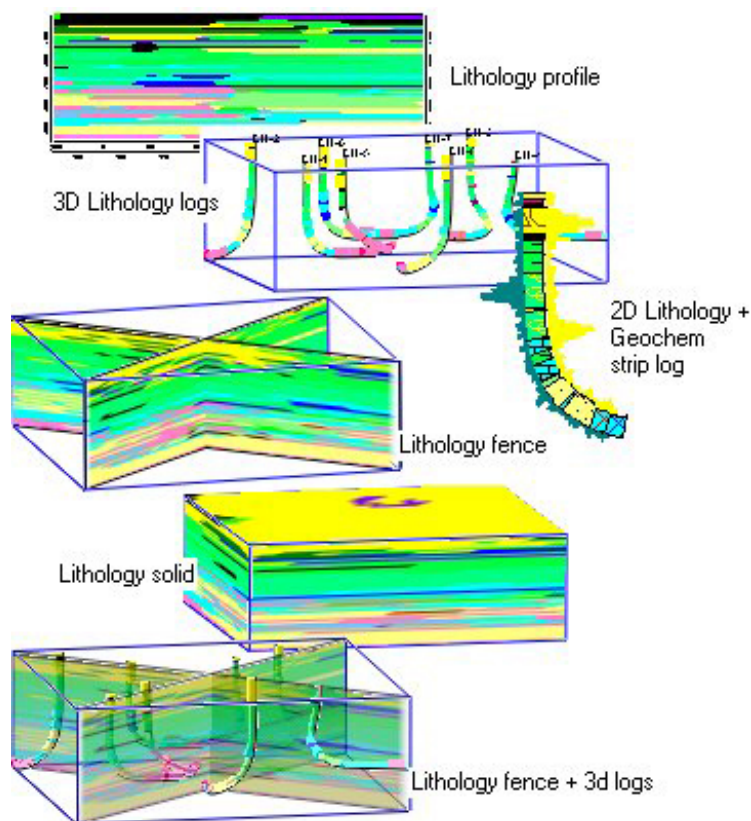


Geochemistry logs in projected section

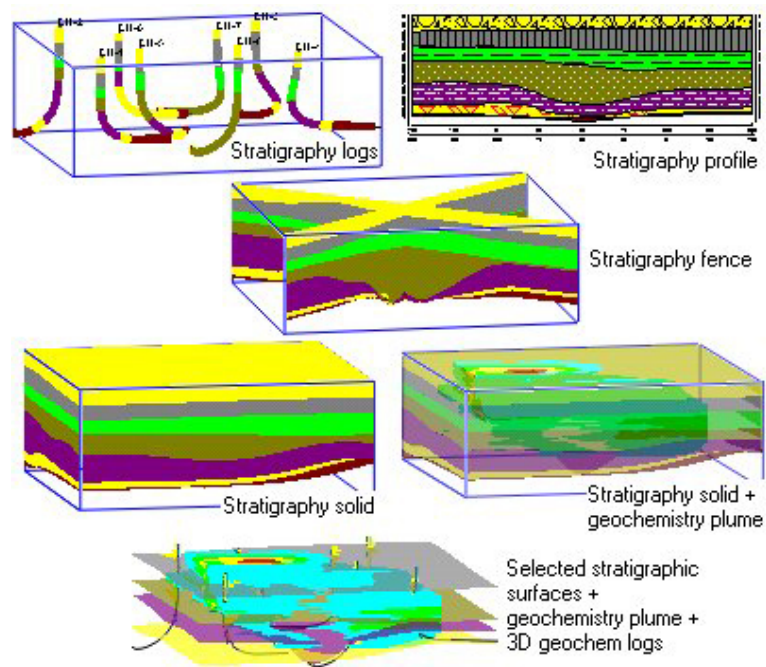
Sample deviated drillhole projected sections in 2D

RockWorks2002 new feature: new plot types

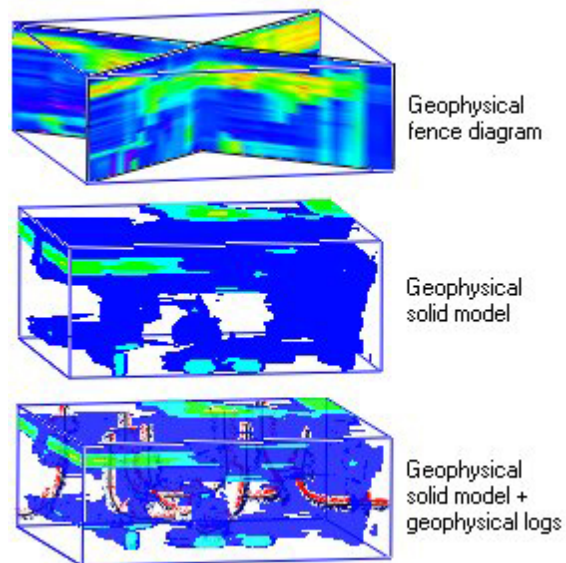
With the new borehole data manager, and 3D OpenGL viewer, you can achieve the following plot types:



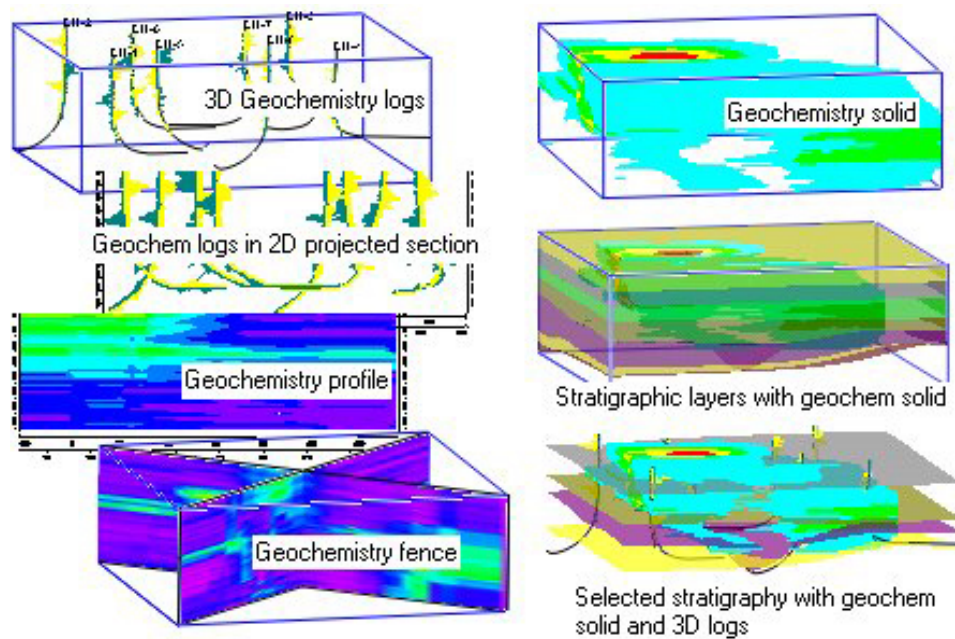
Lithology based projected cross-sections, fence diagrams and solid models



Stratigraphy based surfaces, profiles, fence diagrams, solid models and thickness diagrams



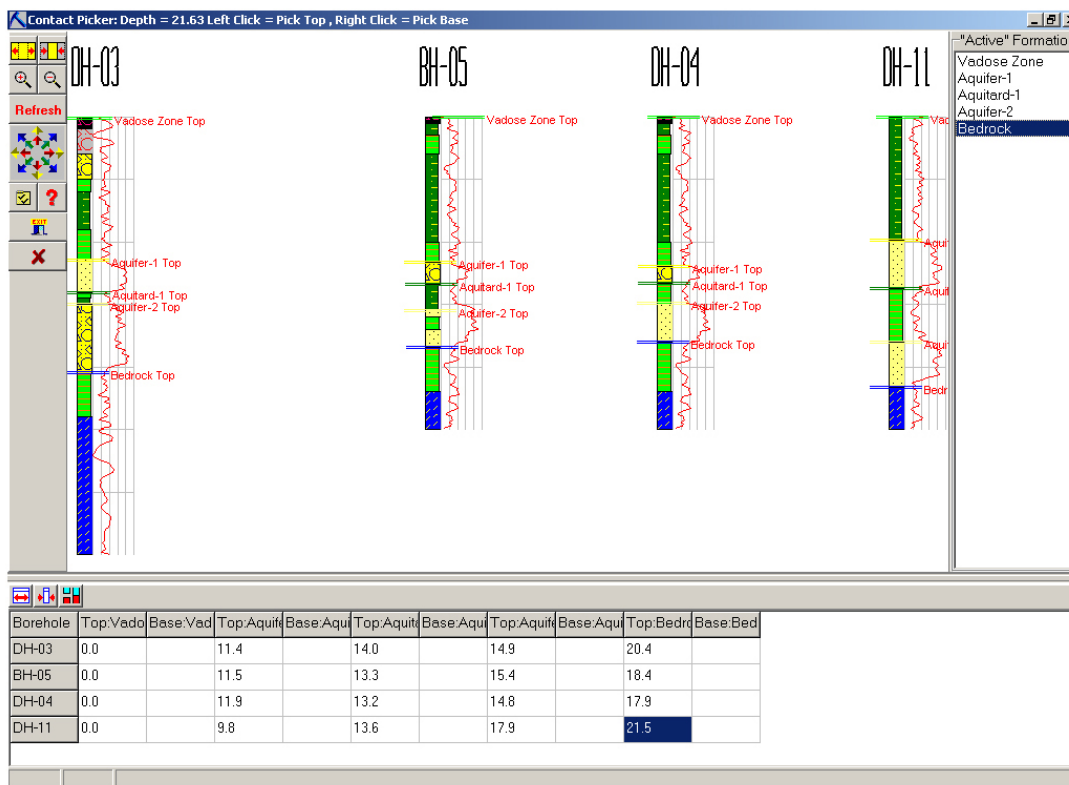
Geophysics based projected cross-sections, fence diagrams and solid models



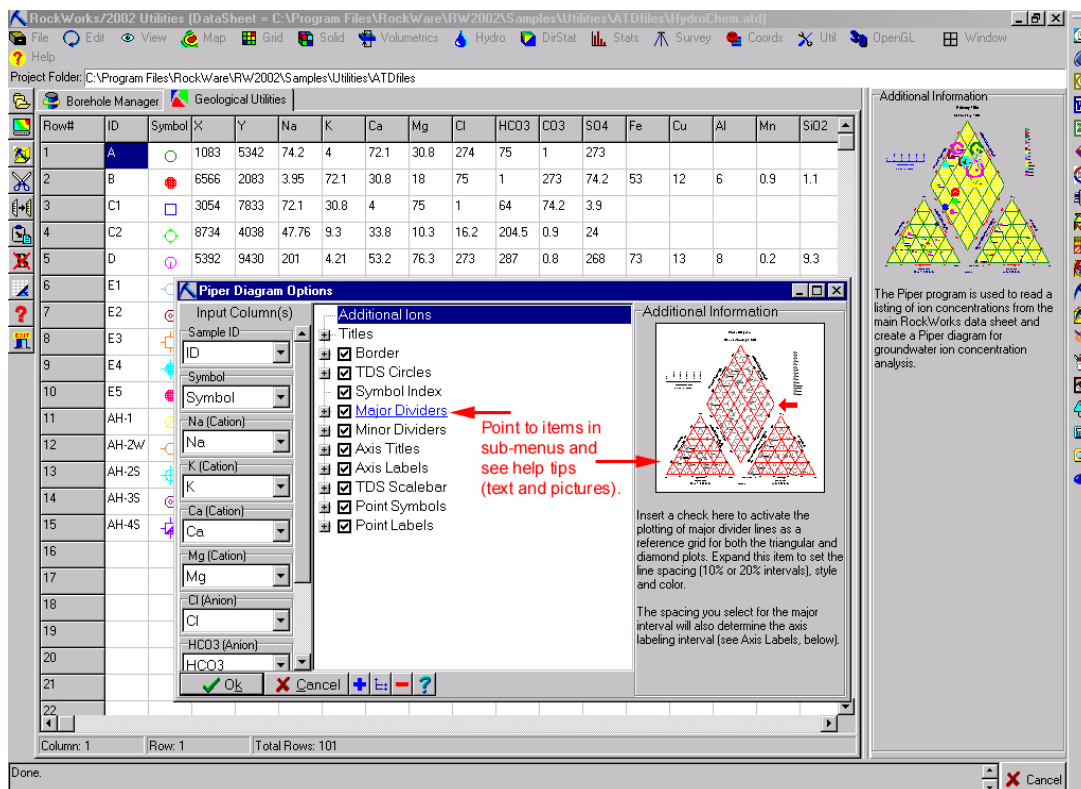
Geochemistry based projected cross-sections, fence diagrams and solid models

RockWorks2002 new feature: new tools

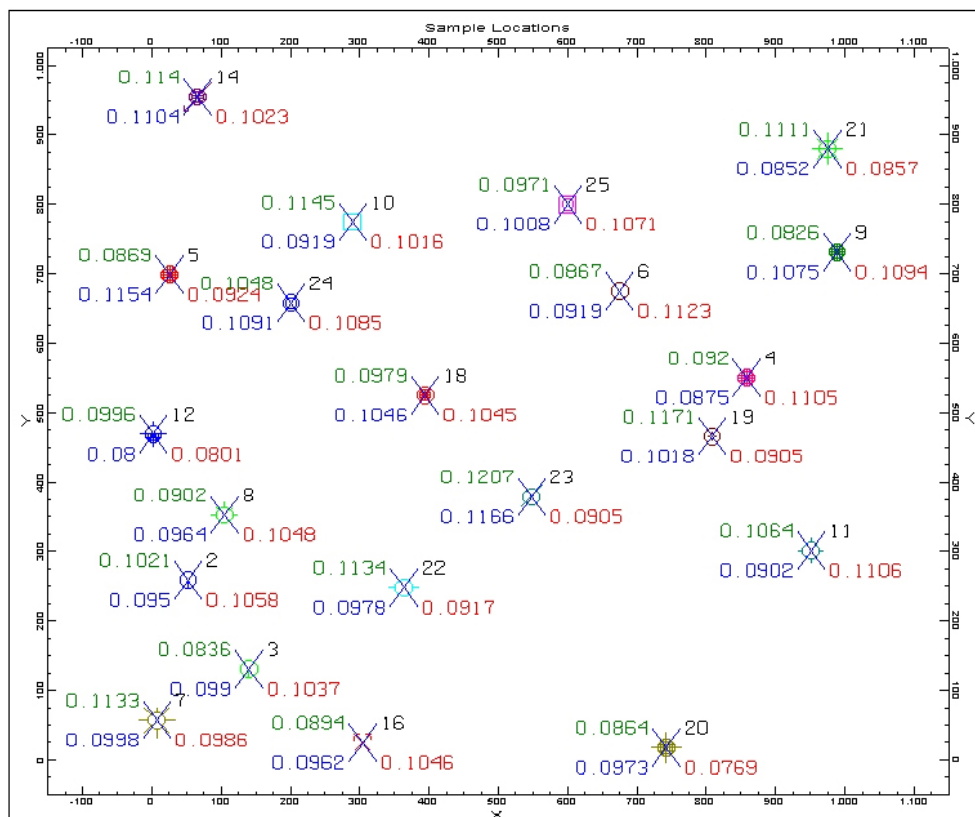
RockWorks2002 includes many other new features such as an improved stratigraphic-contact ("formation tops") picking tool, improved multi-label point maps, and context-sensitive help.



New tool for picking formation tops/stratigraphic contacts



Context-sensitive help menus



Improved multi-label point maps