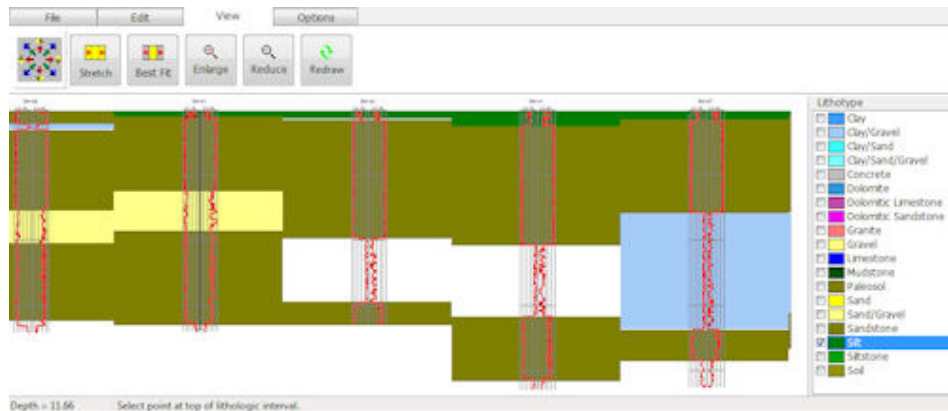


New Features in RockWorks15

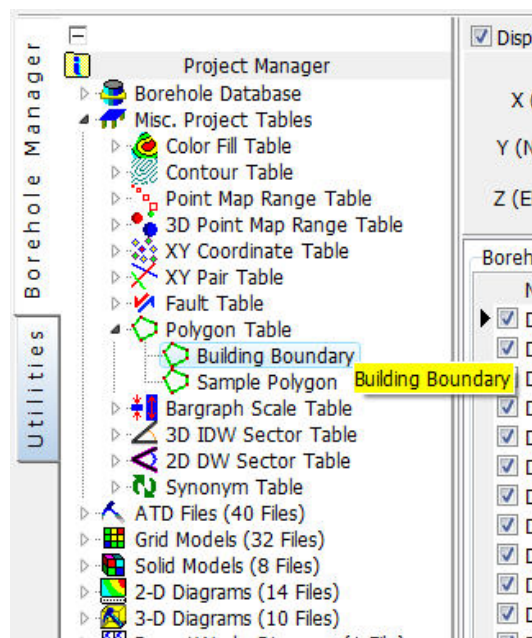
New Data Tools

- Support of MS SQL Server and other databases.
- Lithology Picker: Pick your lithology intervals from raster or geophysical logs in an interactive window.



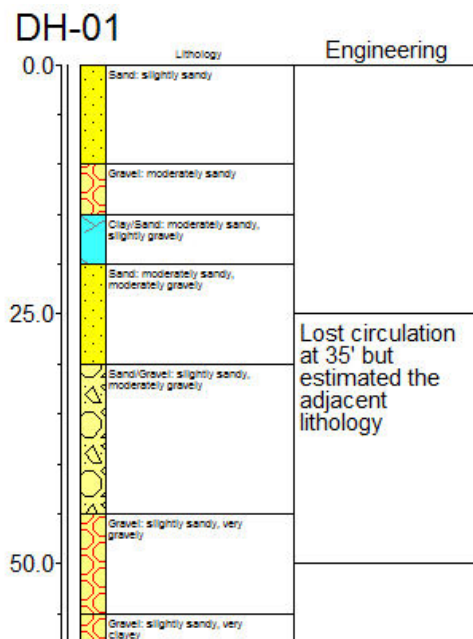
RockWorks Lithology Picker

- Lookup Tables: Project-specific tables, such as color-fill, polygon, point scaling, etc. are now stored in the database.
- Reorganized Project Manager: Even easier to access your data, models, and graphics.



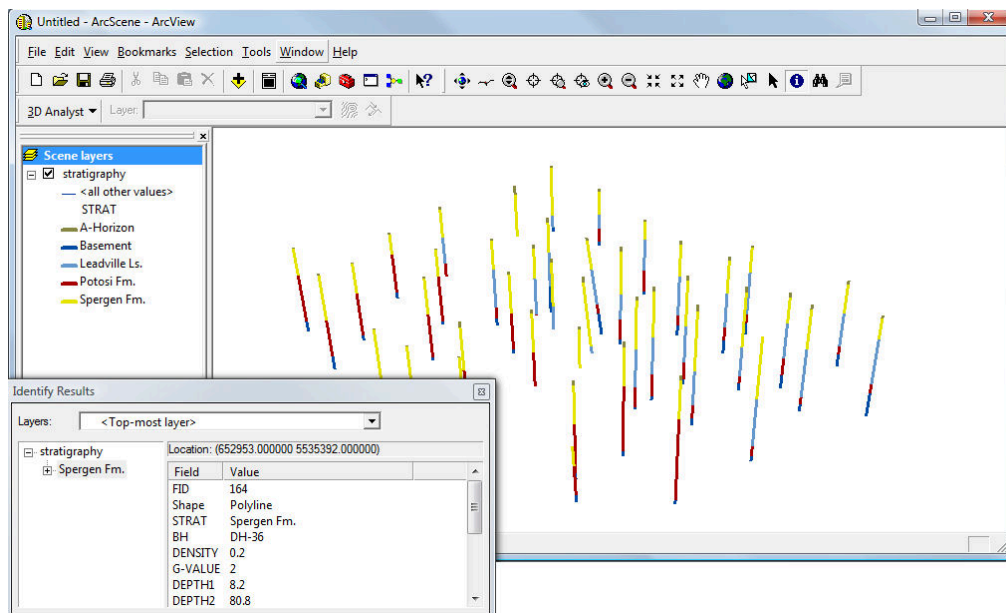
RockWorks Project Manager

- Multiple Aquifers: RockWorks now supports multiple aquifers. Define your Aquifer Names, then enter water levels by date for your different aquifers.
- I-Text and P-Text: Enter non-numeric data - sample numbers, comments, etc. - and display on your logs.
- Shapefile Import: Import Shapefiles and attributes into the Utilities datasheet.



Interval text in RockWorks striplog

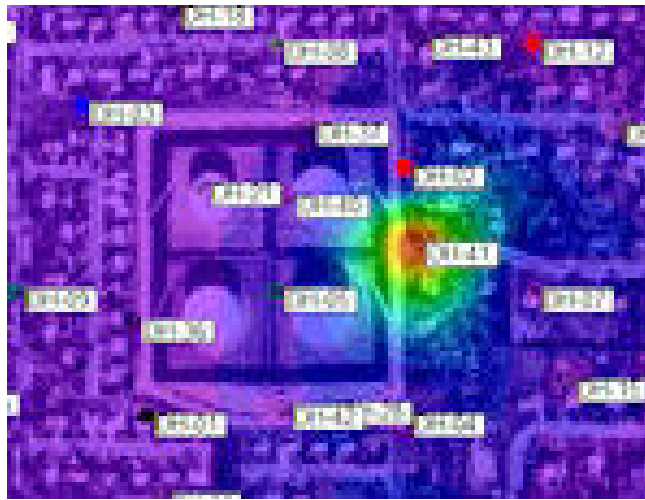
- Shapefile export: Export log data (lithology, stratigraphy, I-Data, T-Data, P-Data, fractures, water levels, well construction) to 3D Shapefiles, with attributes. Display and analyze in ArcScene.



RockWorks 3D Shapefile Export

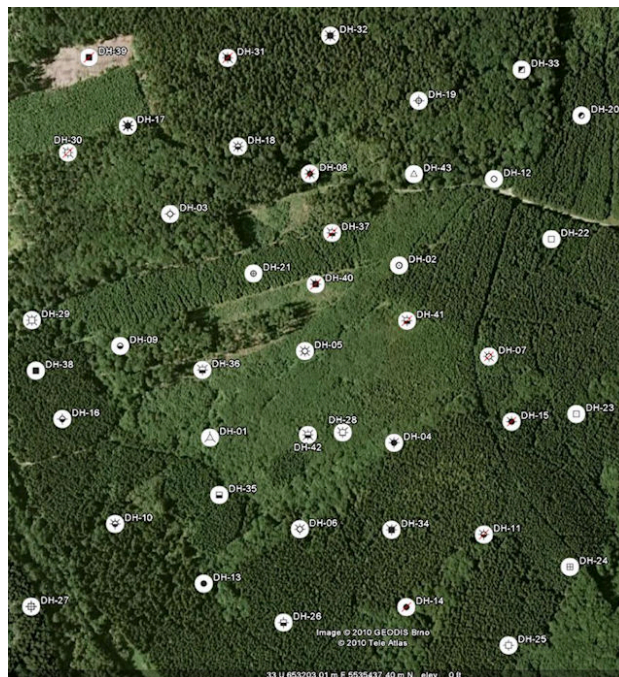
New Mapping and Gridding Options

- Kriging Tools: New variogram models, an interactive variogram editor, and a variogram matrix plot.
- Transparency: Adjust the transparency of color contour and raster layers in your RockPlot2D images.



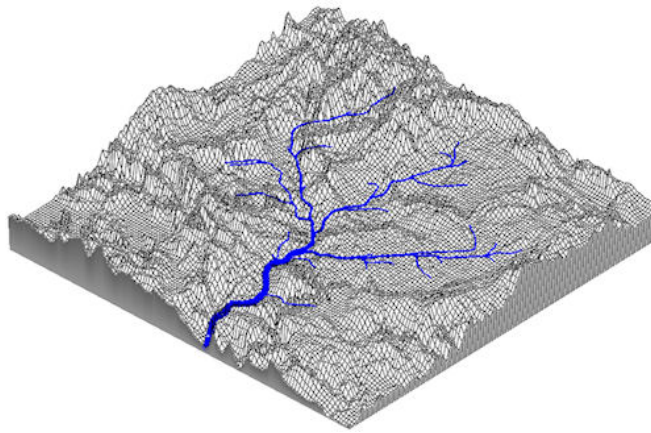
Transparent color contours overlying an aerial photo in RockWorks

- Google Earth: Display your borehole locations in Google Earth.



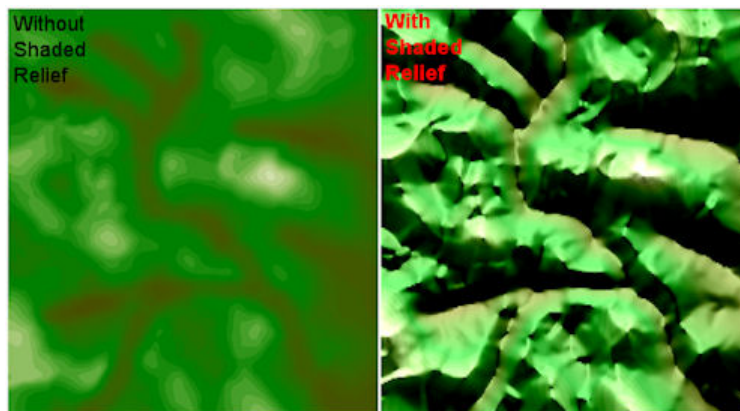
RockWorks borehole locations displayed in Google Earth

- Rose and stereonet diagrams from grid models: Run a topography grid through a slope/aspect analysis and generate a rose or stereonet diagram.
- Drainage Nets / Flow Maps: New tools in 2D and 3D, with exports of line segments, fill sinks, and stratigraphy filters.



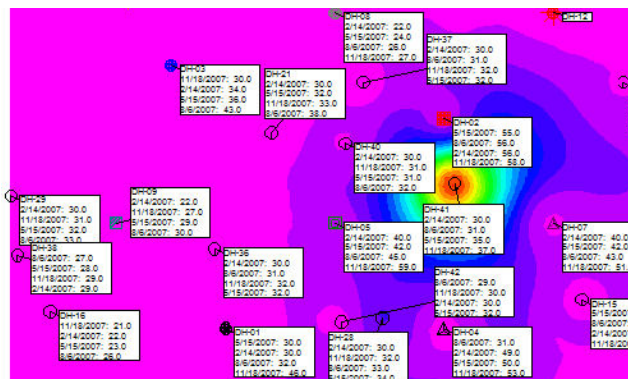
RockWorks Drainage Map

- New Range/Township/Section Coverage - The free RockWare LandBase has been expanded to cover most of the U.S.
- Easy section maps for your project area.
- New color palettes: Automatic palettes, custom palettes, and multiple color cycles.
- Shaded relief: Display 2D contour maps with a variety of shaded relief options.



Shaded Relief applied to RockWorks Contour Map

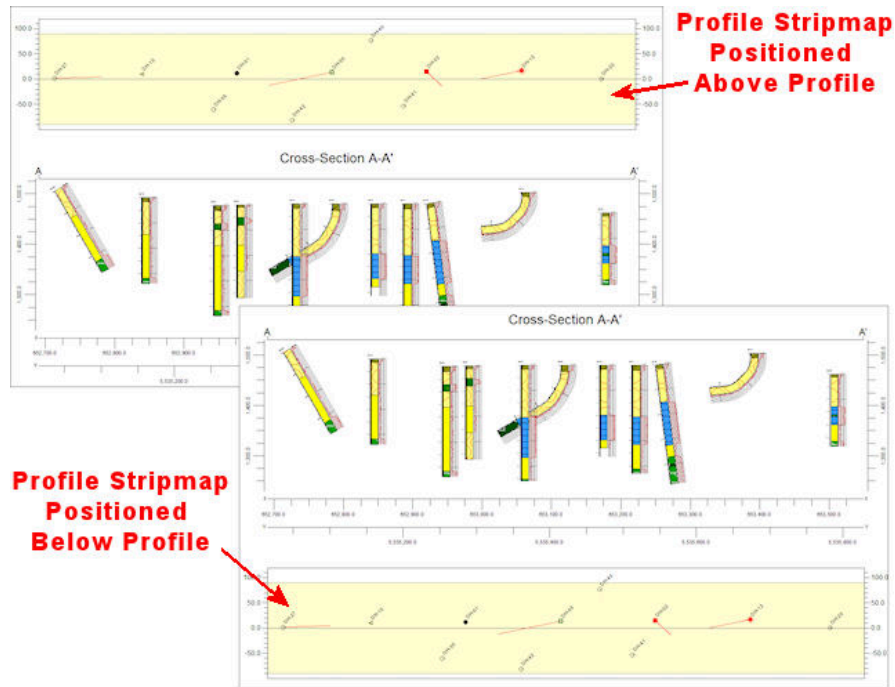
- Point Map Layers: Symbols and labels added for all Borehole Manager maps (stratigraphy, t-data, etc.)
- Point Map Labels: Detailed labels can display varied types of data, such as stratigraphy thickness, water level elevations, T-Data dates and values, and more.



Detailed Point Map Labels in RockWorks

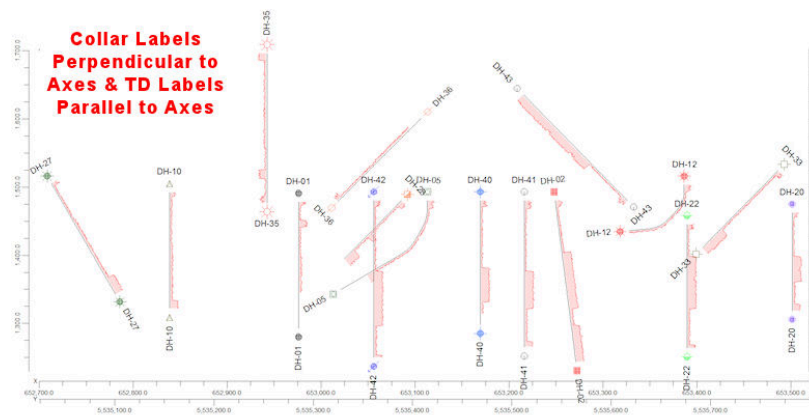
New Striplog and Cross Section Tools

- I-Text and P-Text: Display downhole comments, notes, etc. in striplogs.
- Text Wrapping: Display detailed descriptions.
- Profile "Stripmaps": Plot borehole locations relative to projected profiles, along with collar distances.



Add a Stripmap to the Top or Bottom of a Striplog or Interpolated Profile Diagram

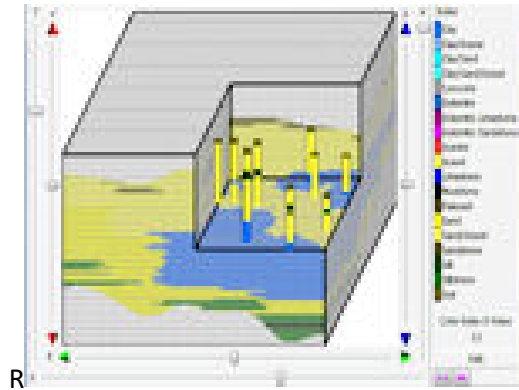
- Custom Color Tables: Link these to your 2D I-Data and T-Data bargraphs
- Log Titles: Plot at the top and/or base of the logs - handy for inclined and deviated holes.



Display borehole IDs and symbols at the top and/or base of the holes

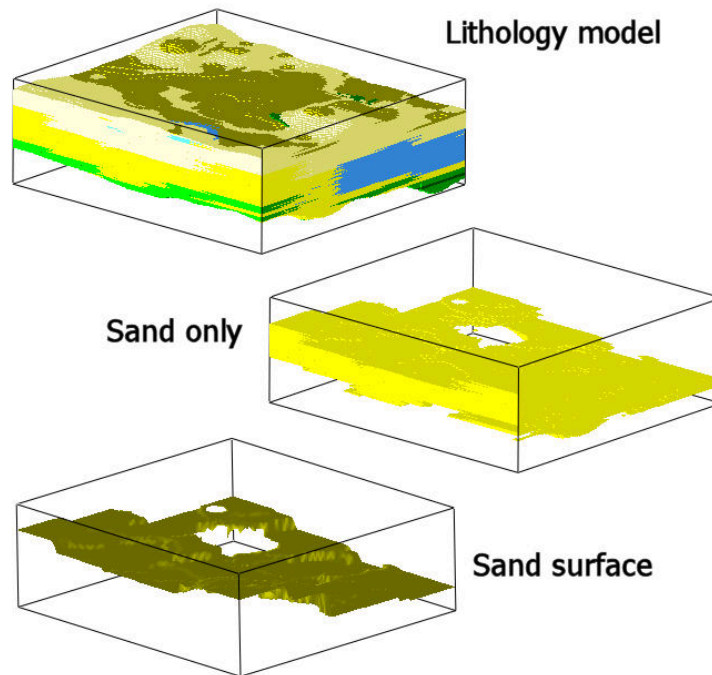
New Solid Modeling and Display Tools

- Filters: Automatic filtering of ground surface and borehole bases (manual options too).
- Interactive Editor: Use the new 3D solid model editor to edit individual voxels or blocks drawn as polyhedra.



RockWorks interactive solid model editor

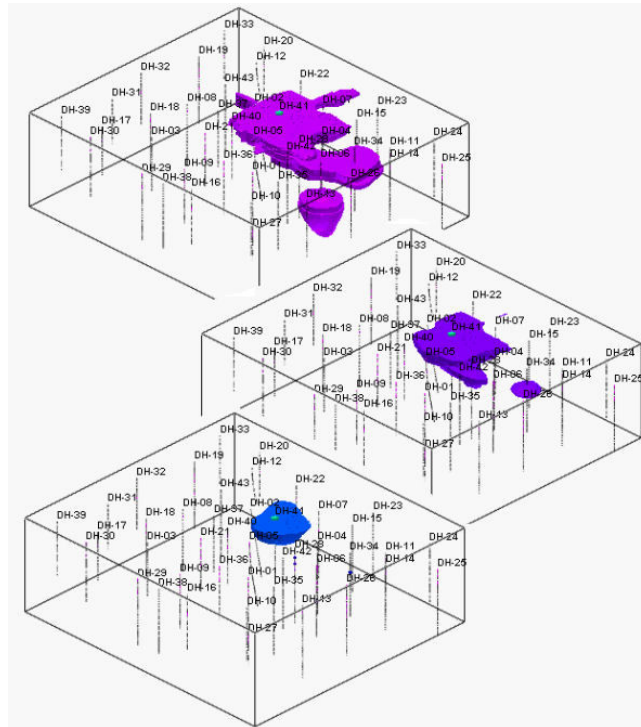
- Lithology models:
 - Create surfaces for uppermost and lowermost contacts.
 - Create isopach maps and models.



Use RockWorks to generate lithology surfaces

- Contours: Display contours on the faces of 3D isosurface cutouts.
- Animations:
 - Animate increasing/decreasing isolevels.

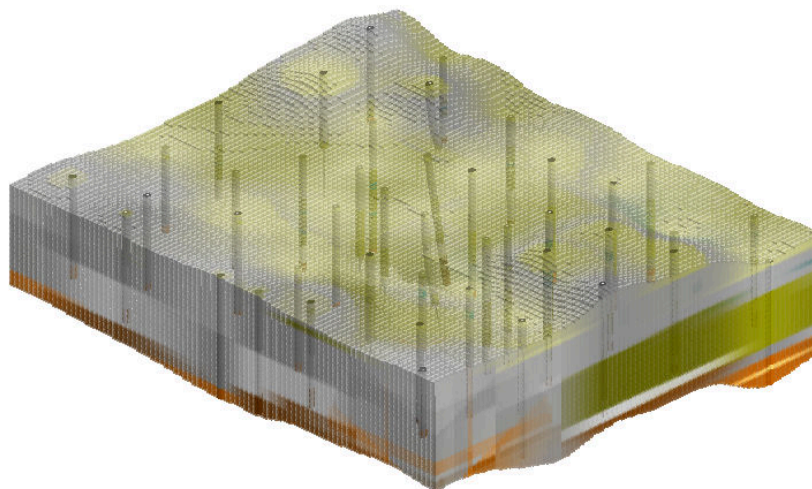
- Animate automatic beveling of voxel blocks or isosurfaces.



Animate Isolevels in RockPlot3D

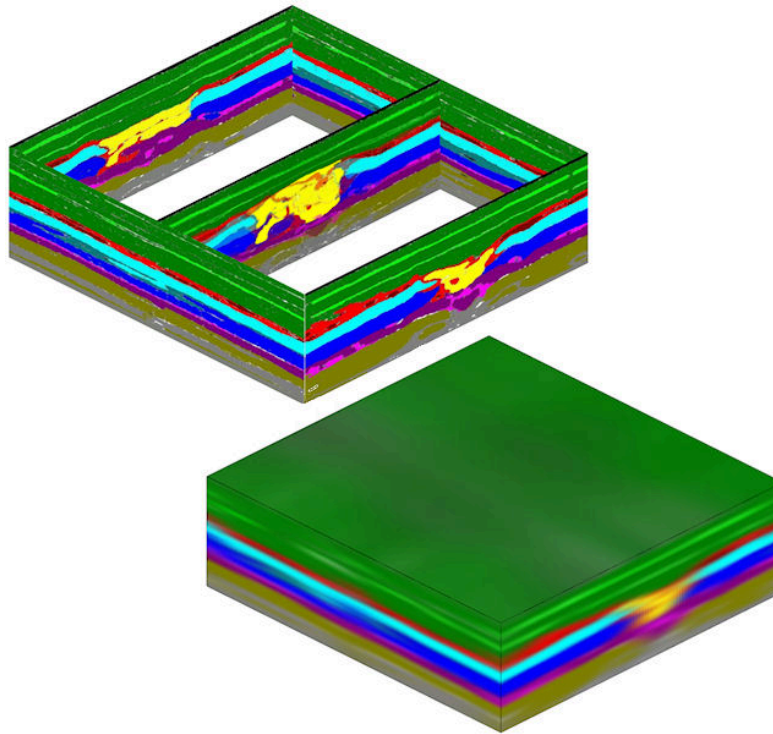
New Color Modeling Tools

- Borehole Colors: Interpolate a solid color model from borehole color intervals.
- Color Import: Import colors into boreholes using descriptive data (such as Munsell codes) or raster images.
- Display Options: Display a color model as 3D voxels, 3D fence panels, 2D section or profile, or 2D plan map.



RockWorks Color Model Displayed as Voxels in RockPlot3D

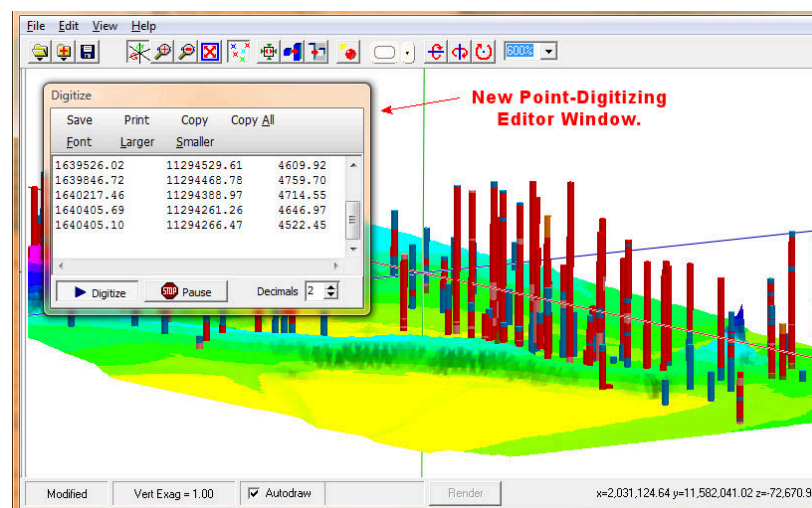
- Raster Images: Interpolate a color model from vertical image panels.



Vertical Raster Images Interpolated into a Solid Color Model

New RockPlot3D Tools

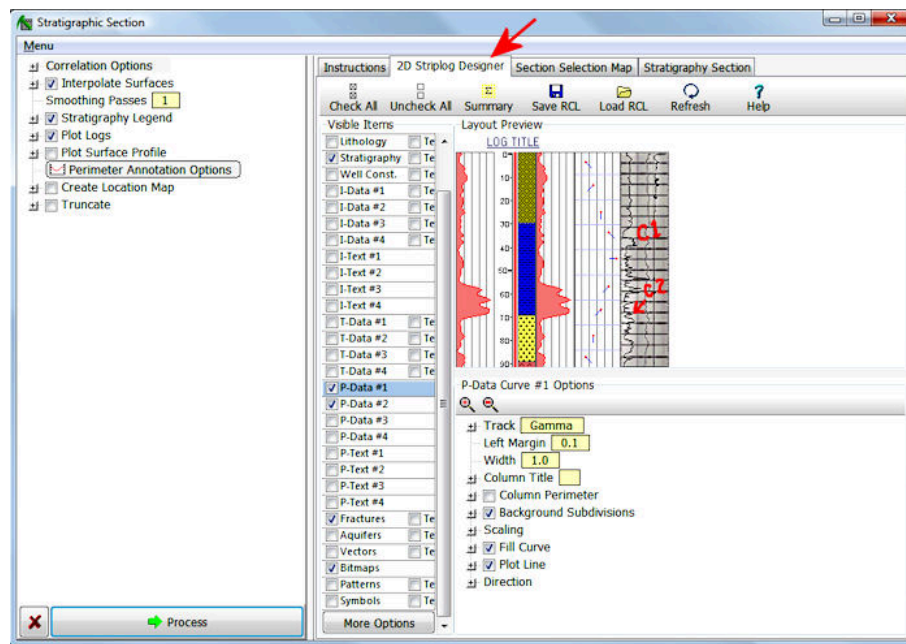
- World Coordinates: View the XYZ coordinates at any point within the display.
- Digitize Coordinates: Digitize XYZ coordinates by clicking in the 3D view.



Capture XYZ Coordinates for any 3D view locations

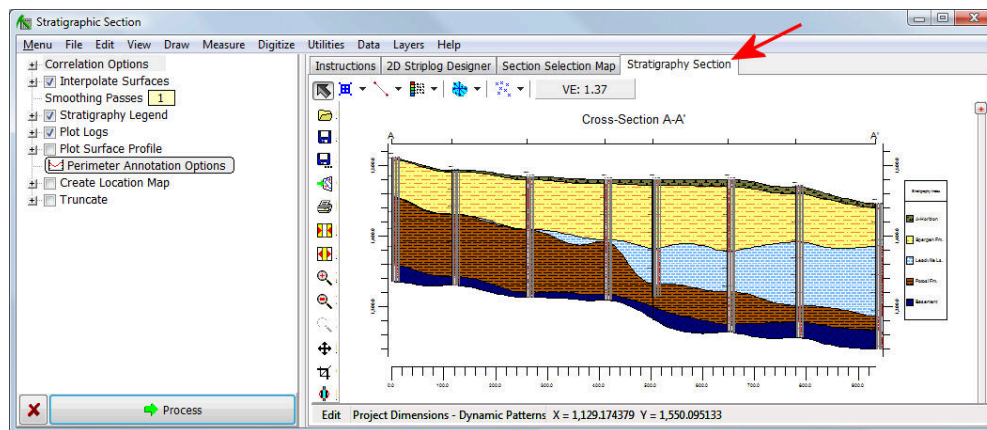
New Interface Options

- Embedded Striplog Layout Tools: Click on the Striplog Designer tab to define the log settings.
- Embedded Profile, Section, Fence tabs: Click on the Select Map tab to define the panel locations.



Log Designer tools embedded in Options window

- Embedded Output: 2D images, 3D images, text reports are displayed right within the program's Options window. This allows you to adjust settings and re-process the diagram with just a few clicks. You can also quickly "un-dock" the window to keep that copy on your desktop.



Cross Section embedded in Options window

- Embedded Help: See instructions for the current topic right within the Options window.
- Detailed Options Windows: All new dialogs for gridding, solid modeling, mapping, and other functions.
- Maintain separate menu settings for different projects.