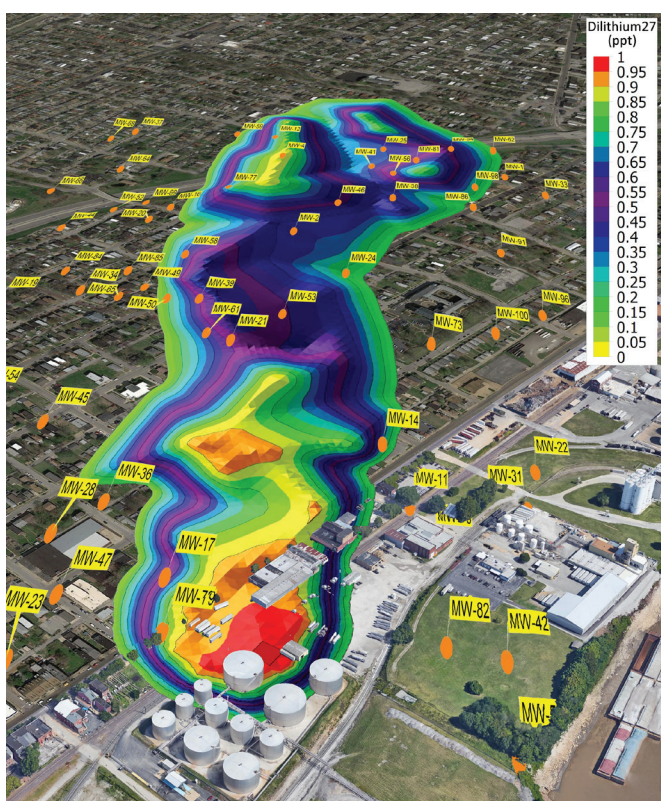




RockWare®

Since 1983

Geo-Scientific Consulting,
Litigation Support, Software,
Videos, Graphics & Analysis.



Call RockWare today at:
800-775-6745 (U.S.)
+41 92 967 52 53 (Europe)



RockWare was founded in 1983 to provide geoscientific software and consulting to a variety of markets, including petroleum, mining, environmental and civil engineering. RockWare consists of geoscientists with a wide variety of technical knowledge and real world experience upon which customers rely for assistance with their projects, fast reliable analysis of their data, and litigation support using videos and graphics.

RockWare's ability to quickly create scientifically accurate, understandable, and appealing analysis, diagrams and videos has provided enormous benefit for our satisfied customers (see page 16–17).

**Amazing Videos,
Graphics and Analysis
Supported by Science.**

Litigation Support & Graphics for:

- Environmental
- Oil and Gas
- Mining
- Hydrogeological Sciences

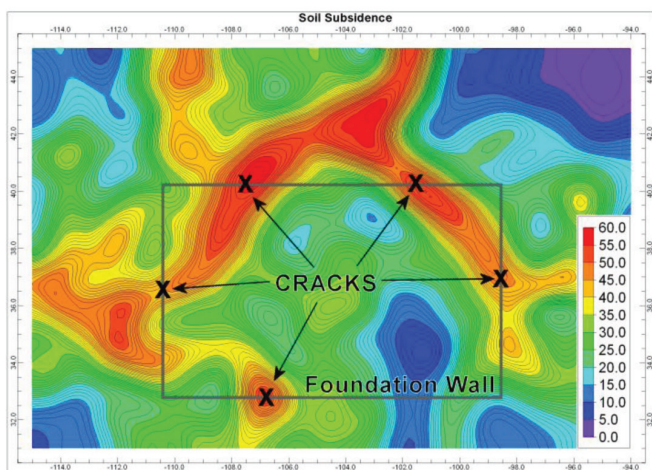
Modeling, volumetrics, graphics, and videos of virtually any type of subsurface data including:

- Contaminant Plumes
- Ore Bodies
- Reservoirs
- Well/Borehole Geophysics
- Reserve Estimates
- Field Mapping
- Site Characterization
- Digital Well/Borehole Log and Cross-Section Creation
- 3D Visualization
- Virtual Tour/Flyover Videos

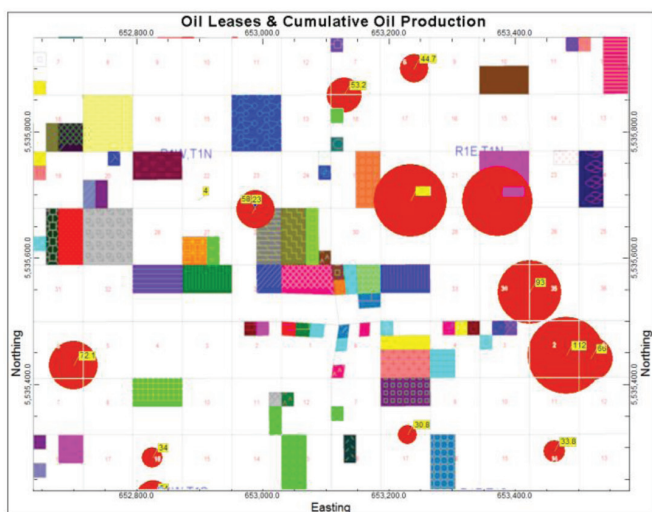
Extensive expertise in:

- Geology
- Geomodeling
- Geochemistry
- Geomorphology
- Physics
- Hydrogeology
- Groundwater Modeling
- And much more

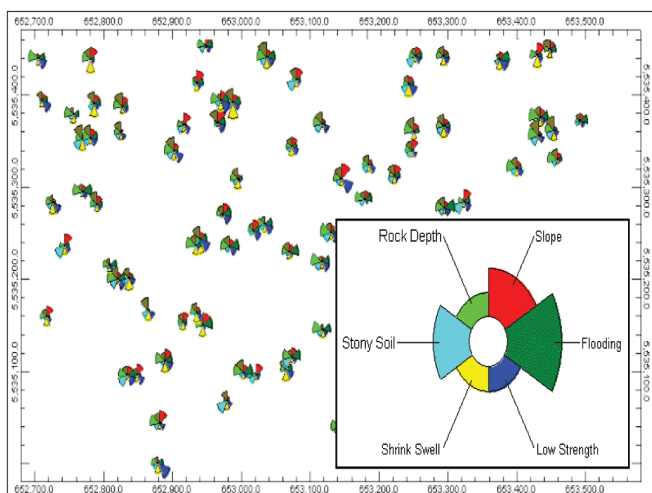
You provide the data,
we'll provide the...
Maps.



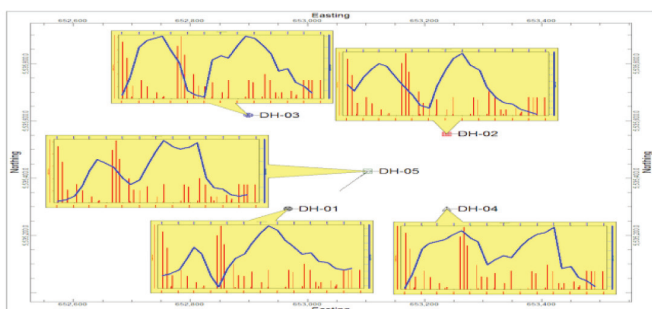
Foundation Cracks Caused by Poor Site Preparation



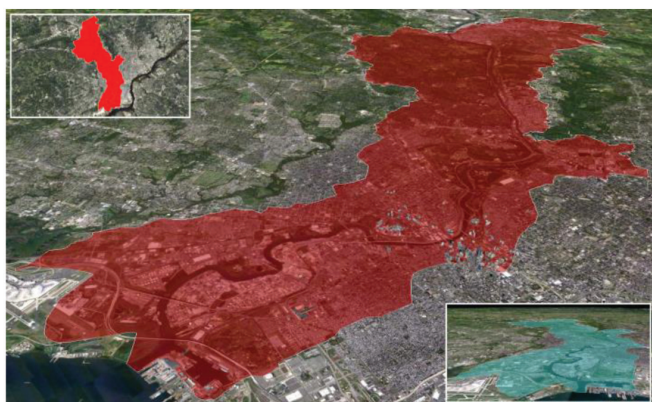
Cumulative Oilfield Production Map



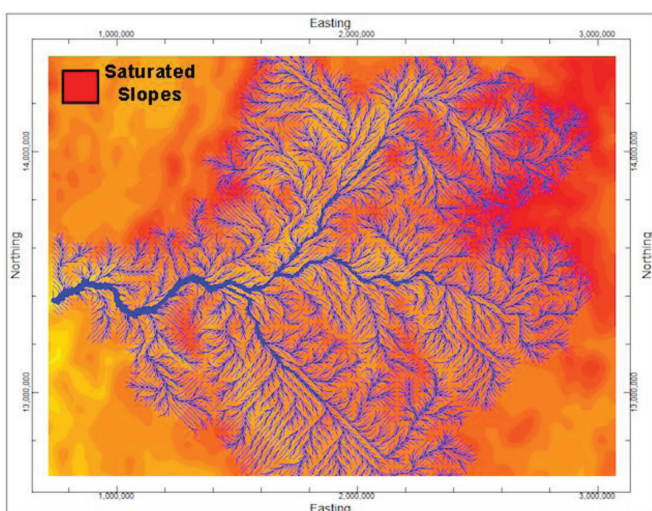
Housing Development Construction Hazard Map



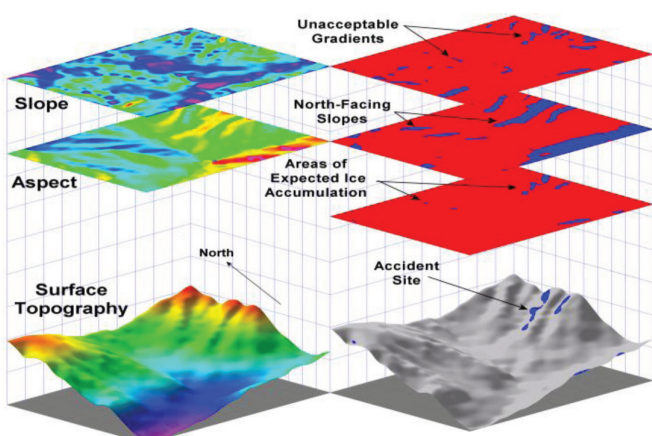
Groundwater Percolation Rates:
As inferred from precipitation (red) and water table levels (blue)



Insurance Risk – Flood Susceptibilities

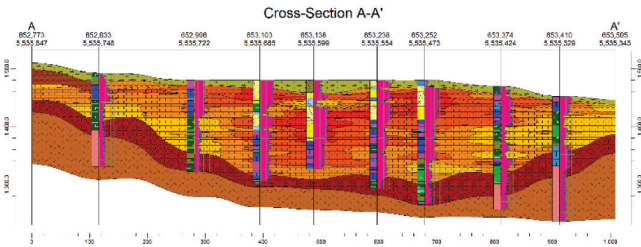


Insurance Risk – Saturated Slope Failure

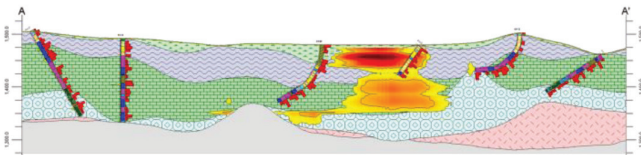


Accident Site Associated with Poor Zoning

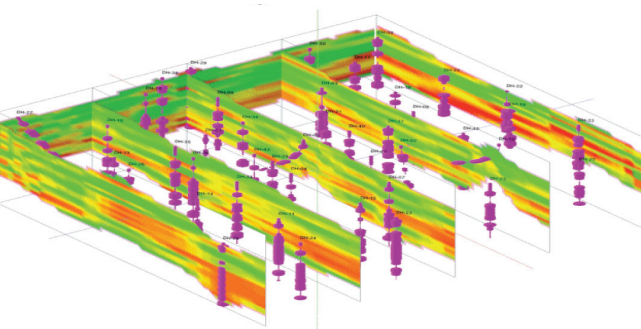
Cross-Sections



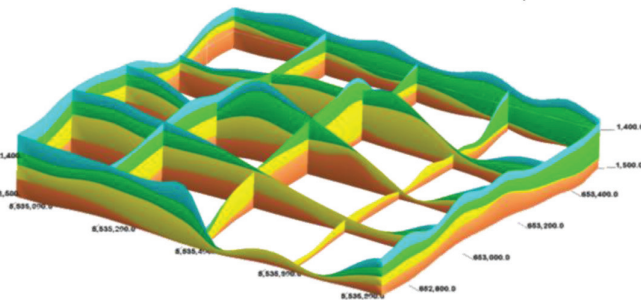
Soil Compaction Levels



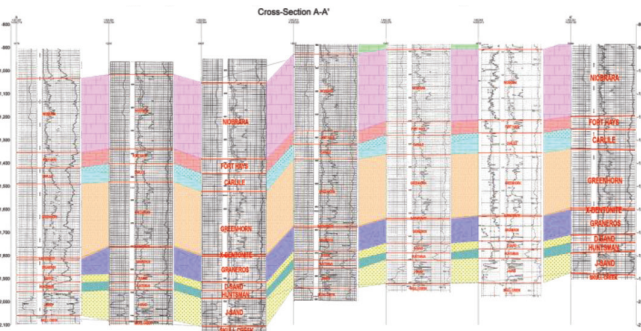
Slice Through Contaminated Site



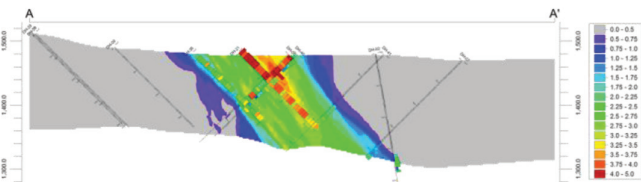
Cross-Sections within Formation Porosity Model



Stratigraphic Layers Beneath Litigation Site

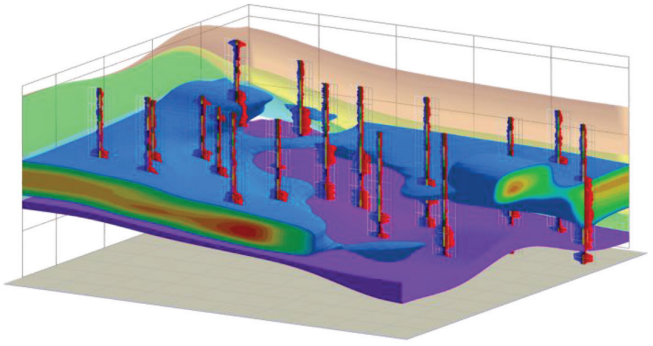


Correlated Petroleum Logs

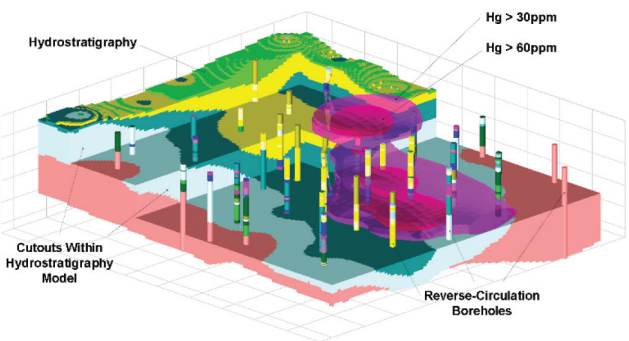


Hydrothermally Mineralized Vein

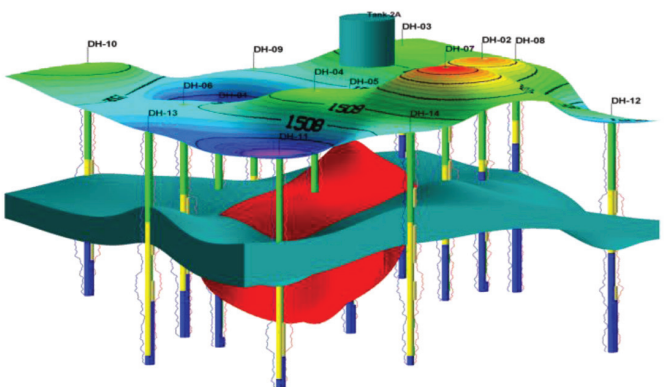
Three-Dimensional Diagrams



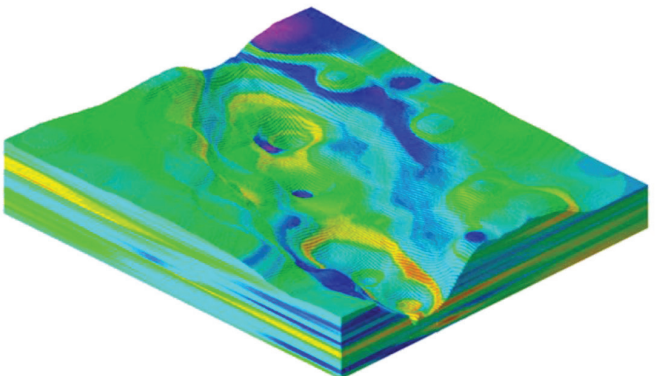
Hydrocarbon Reservoir



Hydrostratigraphy and Geochemistry

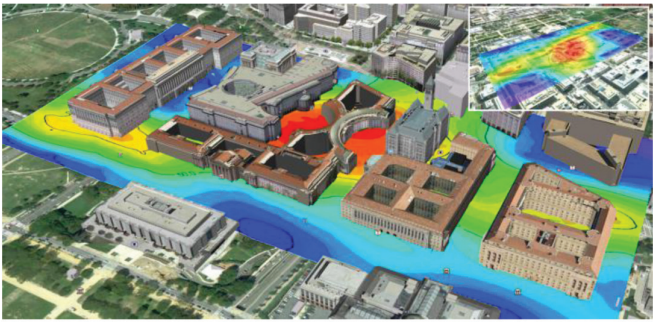


Contamination Plume from Leaking Surface Tank

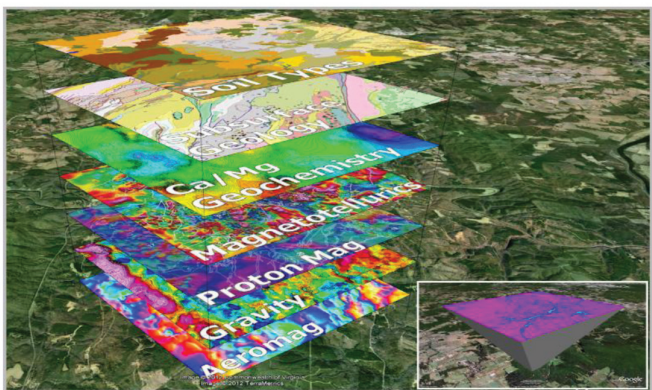


Complex, Inter-Fingered Geology
Color-Coded by Hydraulic Conductivity

Video Animations



Time-Based Animation Depicting Changes
in Foundation Level Moisture



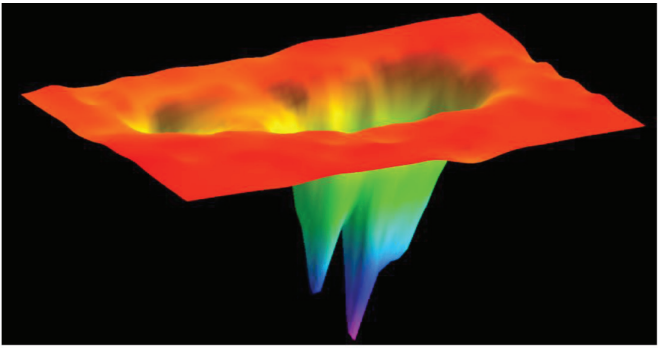
Virtual Tour Depicting Data Sets Available
For Study Site as Floating Layers



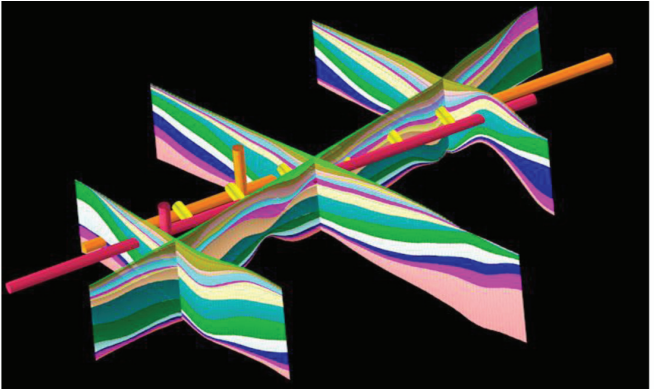
Virtual Tour Showing Visual Impact of Proposed Pipeline



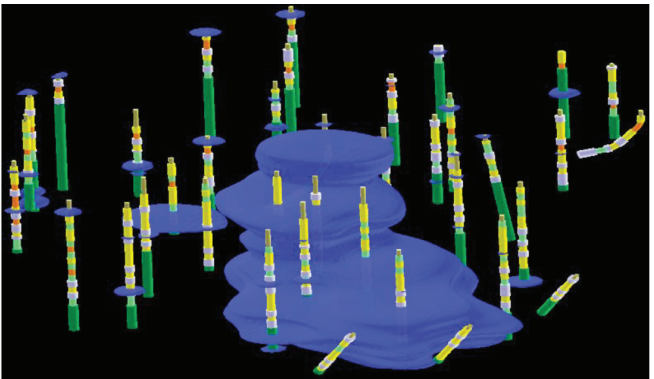
Virtual Tour Depicting Hydrostratigraphic Framework
of Miami, Florida Area



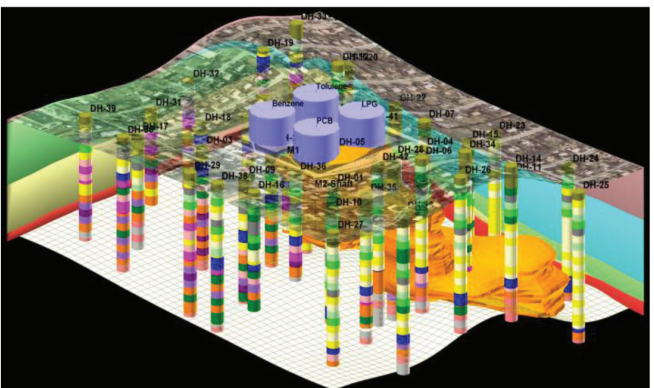
Time-Based Animation Depicting Water Table Drawdown from Over-Pumping Wells



Rotating Animation Depicting Pipeline Network Leaking in Shallow Stratigraphic Units

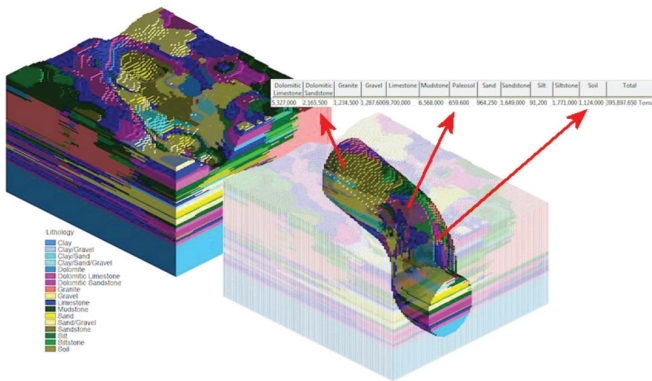


Time-Animation Video Depicting Reservoir Depletion

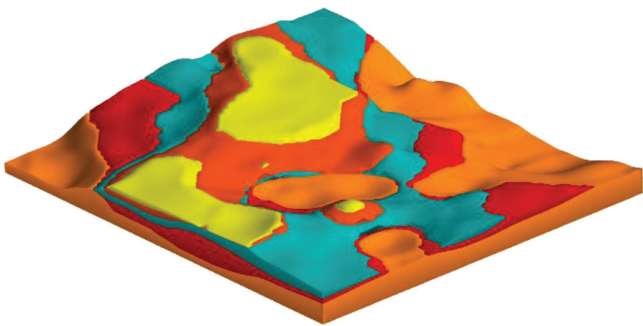


Site Overview: Viewer is gradually introduced to site via draped airphoto, followed by storage tanks, boreholes, stratigraphy and plume.

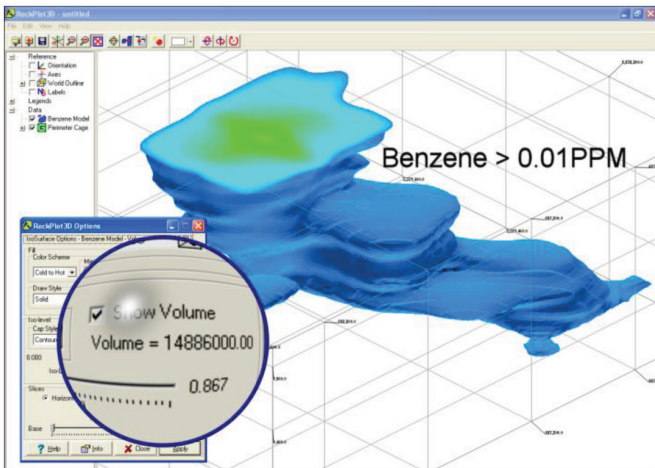
Volumetric Computations



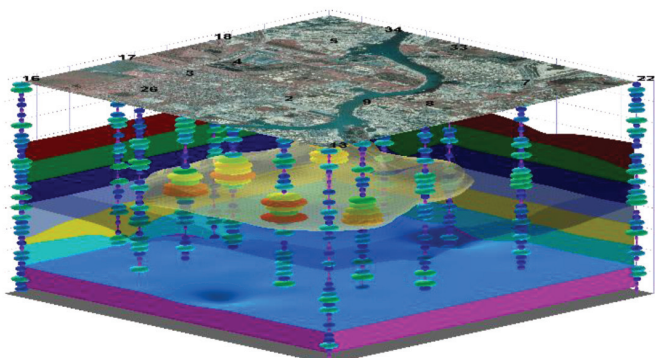
Material Volumetrics – Subway Tunneling Project



Shopping Center Site – Preparation Volumetrics



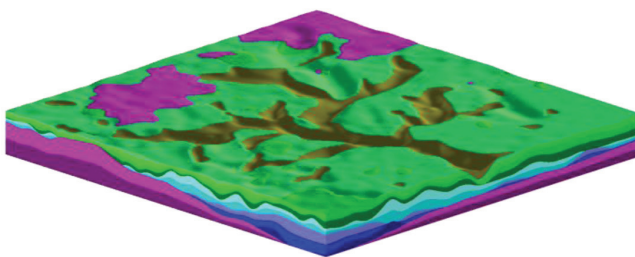
Contaminant Plume Volumetrics



Hydrocarbon Reservoir Volumetrics

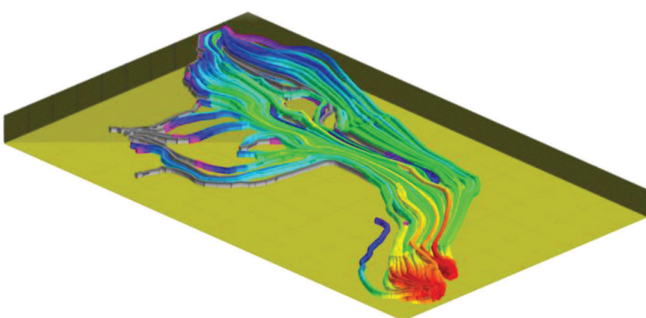
Expertise and Experience

Coal



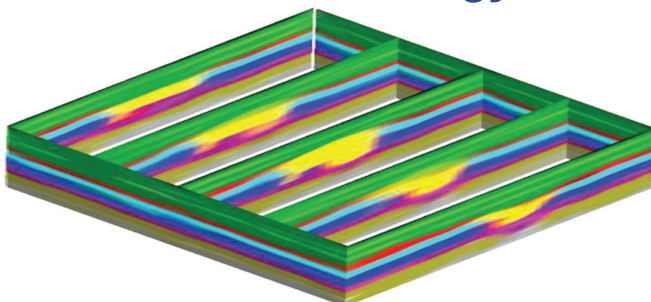
Paleochannels within Coal Seams

Environmental



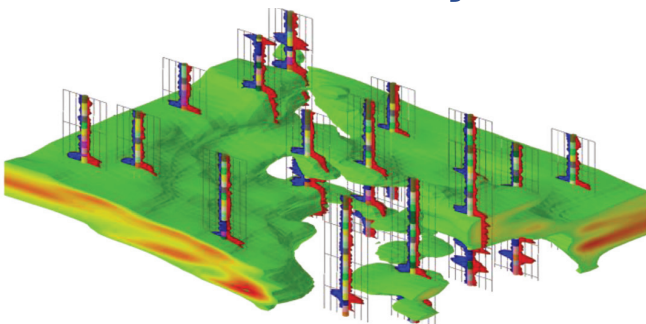
Time-Colored Particle Migration Flowpaths

Forensic Geology



Cone Penetrometer Survey – Buried Evidence

Geochemistry



Geochemical Model – Groundwater Quality Evaluation

Surface Elevation Model

A 3D visualization of a geological model. The top surface is a topographic map with a color gradient from green (low elevation) to brown (high elevation). Below the surface, the subsurface is divided into layers. A prominent feature is a large, irregularly shaped body of material in shades of blue and green, which appears to be a sedimentary basin or a specific geological formation. This body is surrounded by a thick layer of reddish-brown material, likely representing the crust or a specific rock type. The model is shown in a perspective view, highlighting the spatial distribution and depth of the geological features.

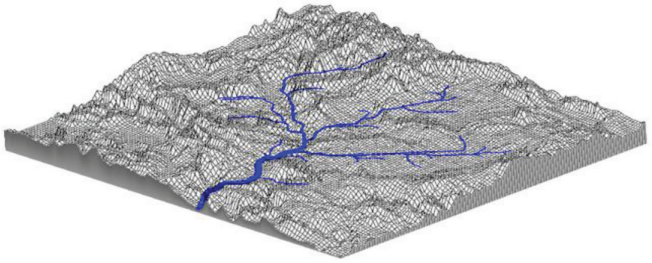
Ground Penetrating Radar (GPR) – Buried Landfill

Material Properties within Failed Roadcut

[illegible]

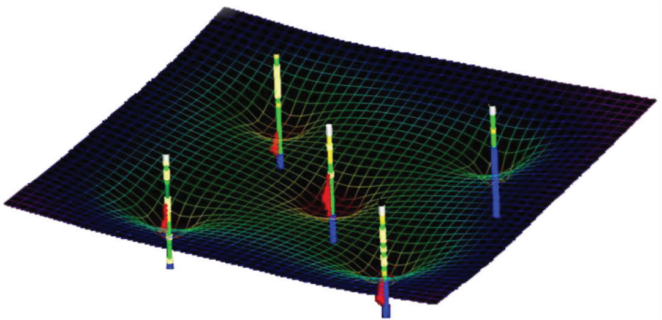
Lithotype Model Used as Input for MODFLOW K-Values (Hydraulic Conductivity)

Hydrology



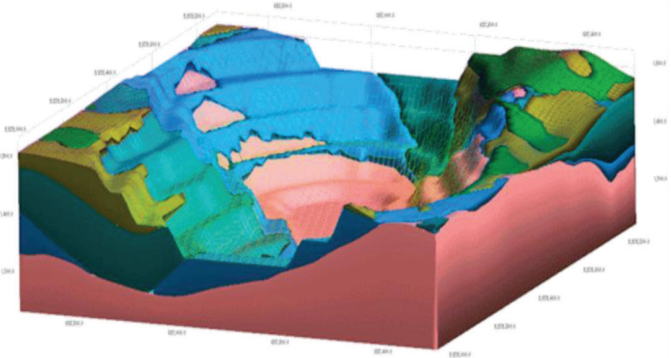
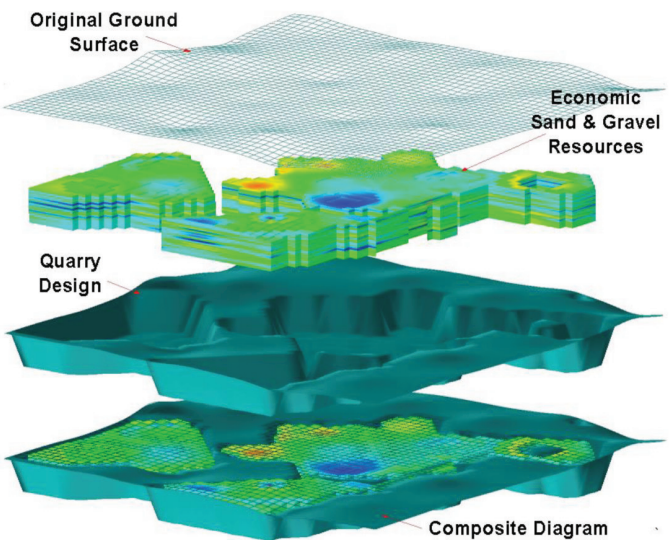
Drainage Network

Hydrogeology



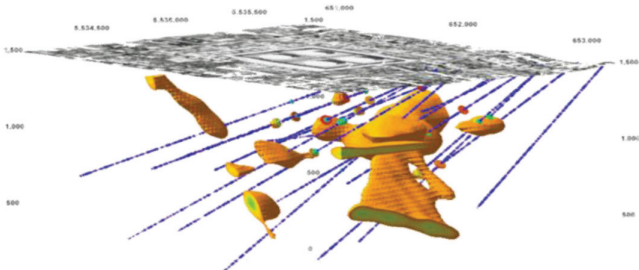
Water Level Drawdown from Excessive Pumping

Industrial Minerals



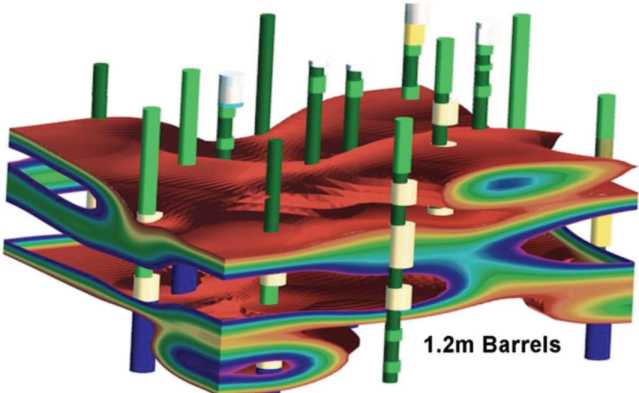
Open-Pit Mine & Ore Models – Sand & Gravel Deposits

Metals



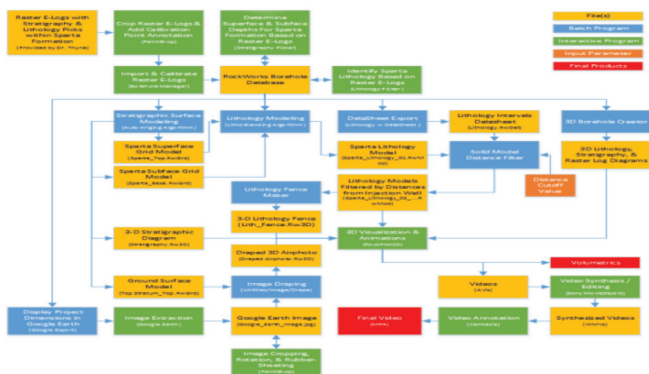
Boreholes Intercepting Ore Body

Oil & Gas

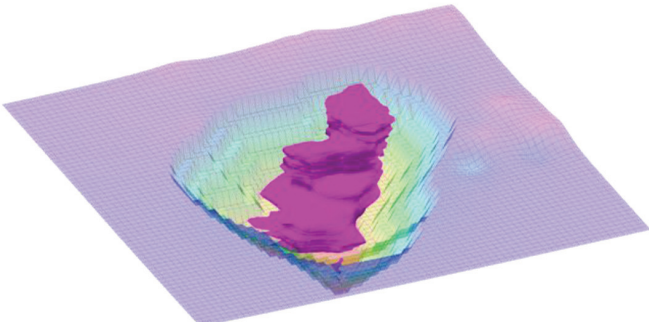


Producing Zones within Reworked Oil Field

Programming

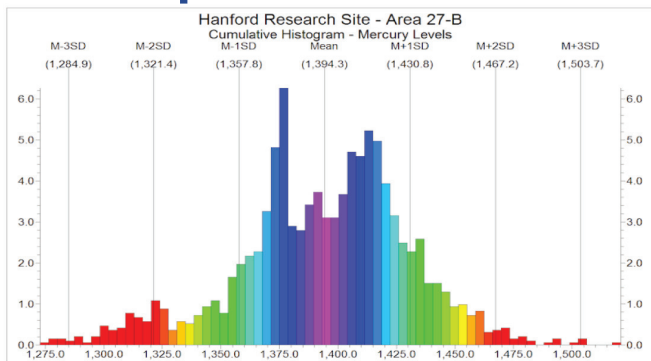


Remediation



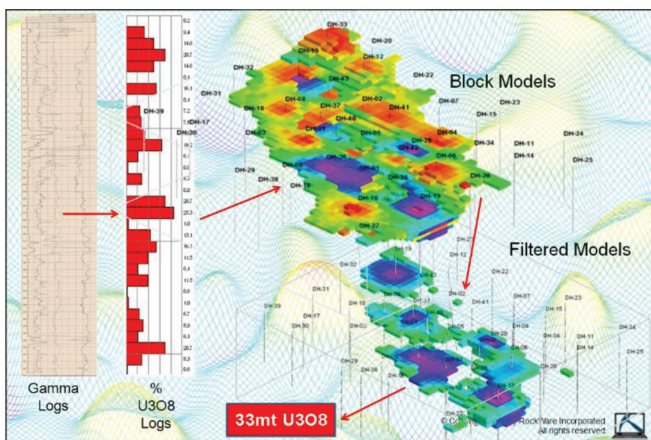
Excavation Required to Remove Contaminant

Spatial Statistics



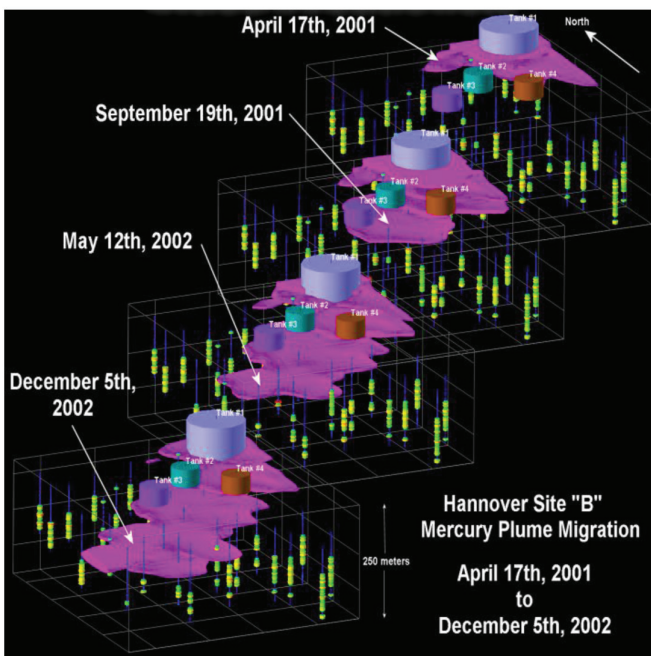
Mercury Distribution within Vadose Zone

Uranium



Uranium Resource Estimation

Video Production



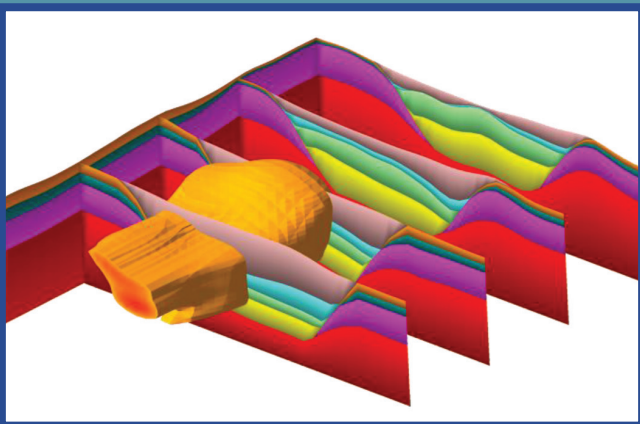
Time-Sequence of Subsurface Mercury Plume Migration

Cross-Section of RockWare's Consulting Clients

Ab Scandinavian GeoPool Ltd
Advanced Resources International, Inc.
Aestus, LLC
AMEC Foster Wheeler Inc.
American Talc Company
Anadarko Petroleum
Apex Geosciences
Arcadis
AUC LLC
Battelle
Boart Longyear Company
Cabot Oil & Gas Corp
ConocoPhillips
Creative Environmental Solutions, Inc.
Damasco Penna
Denison Mines (USA) Corp.
Enap Sipetrol
Enhanced Oil Recovery Institute
Environmental Intl Corp
Eureka Energy
ExxonMobil
Florida State Geological Survey
Foth Infrastructure & Environment
Gay, McCall, Isaacks, Gordon & Roberts
Goolsby Brothers
GSI Environmental
Kentucky Geological Survey

Kleinfelder Redlands
Minerals Technologies
Morris, Polich & Purdy, LLP
Office of Surface Mining
Parsons USA
Petrobras America, Inc.
Quaterra Resources
Samuel Engineering, Inc.
Saskatchewan Minerals, Inc.
SDII Global Corporation
Sesco Group
Shell Global
Southwest Florida Water Mgmt. District
Stephens Environmental Consulting
Tetra Tech EM, Inc.
TGE Resources, Inc.
The Source Group, Inc.
US Army Corps of Engineers
US Geological Survey
Veron, Bice, Palermo & Wilson, LLC
Washoe County Water Resources
West Yost Associates
Wold Companies
Zapata Engineering





RockWare®

2221 East Street
Golden, Colorado 80401
800-775-6745 (US)
+41 92 967 52 53 (Europe)
consulting@rockware.com

