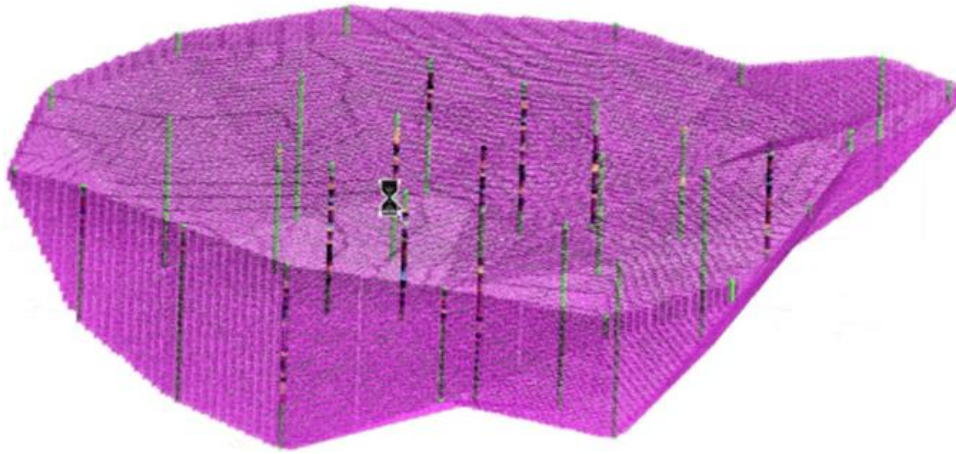
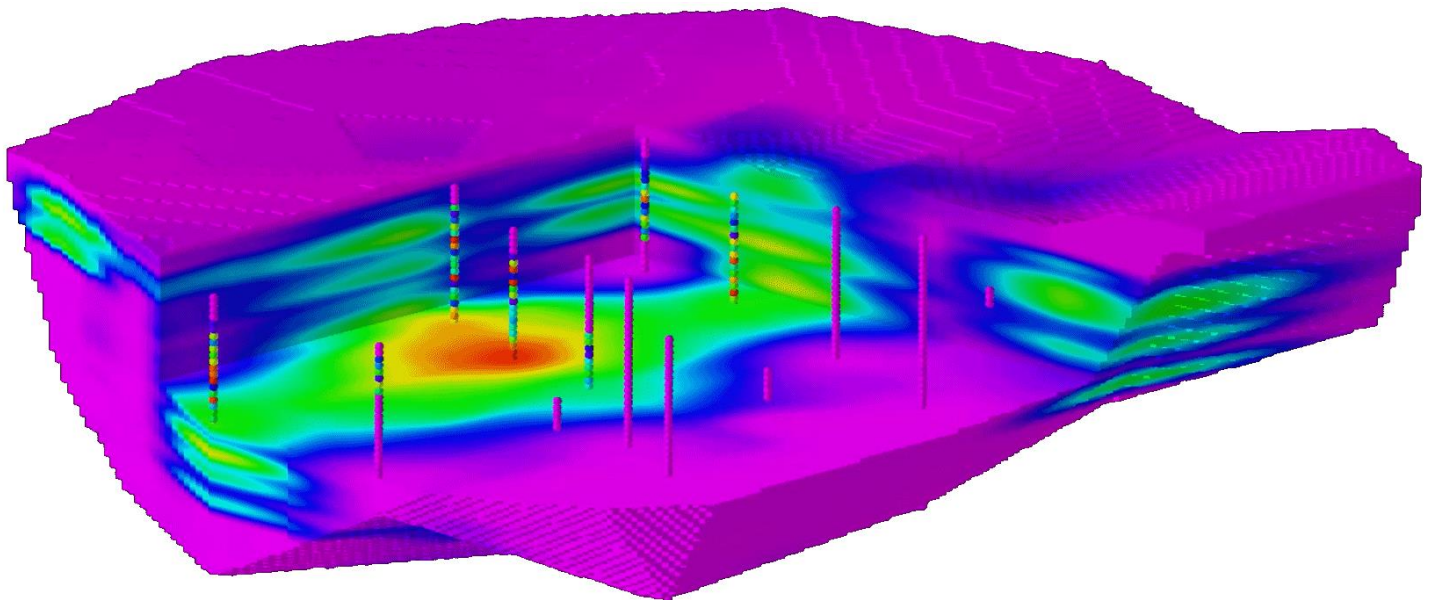
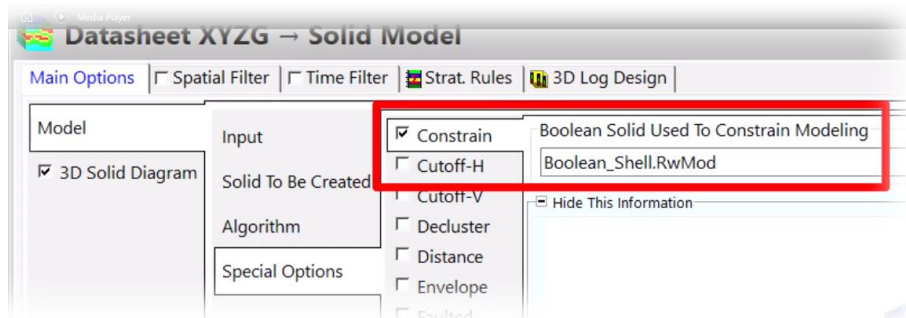


The **Soundings** → **Boolean Solid** program is used to construct a Boolean solid based on the spatial extents of vertically aligned points (e.g. resistivity soundings). This solid may then be used to constrain the subsequent modeling. The upper and/or lower surfaces of the model are triangulated while the lateral extents are based on a convex hull. Please note that this algorithm should not be used with data in which the points are not vertically aligned.



This Boolean model may then be used to constrain a block model interpolation to the region that includes control points.



Interpolated Model as Constrained by Boolean Model