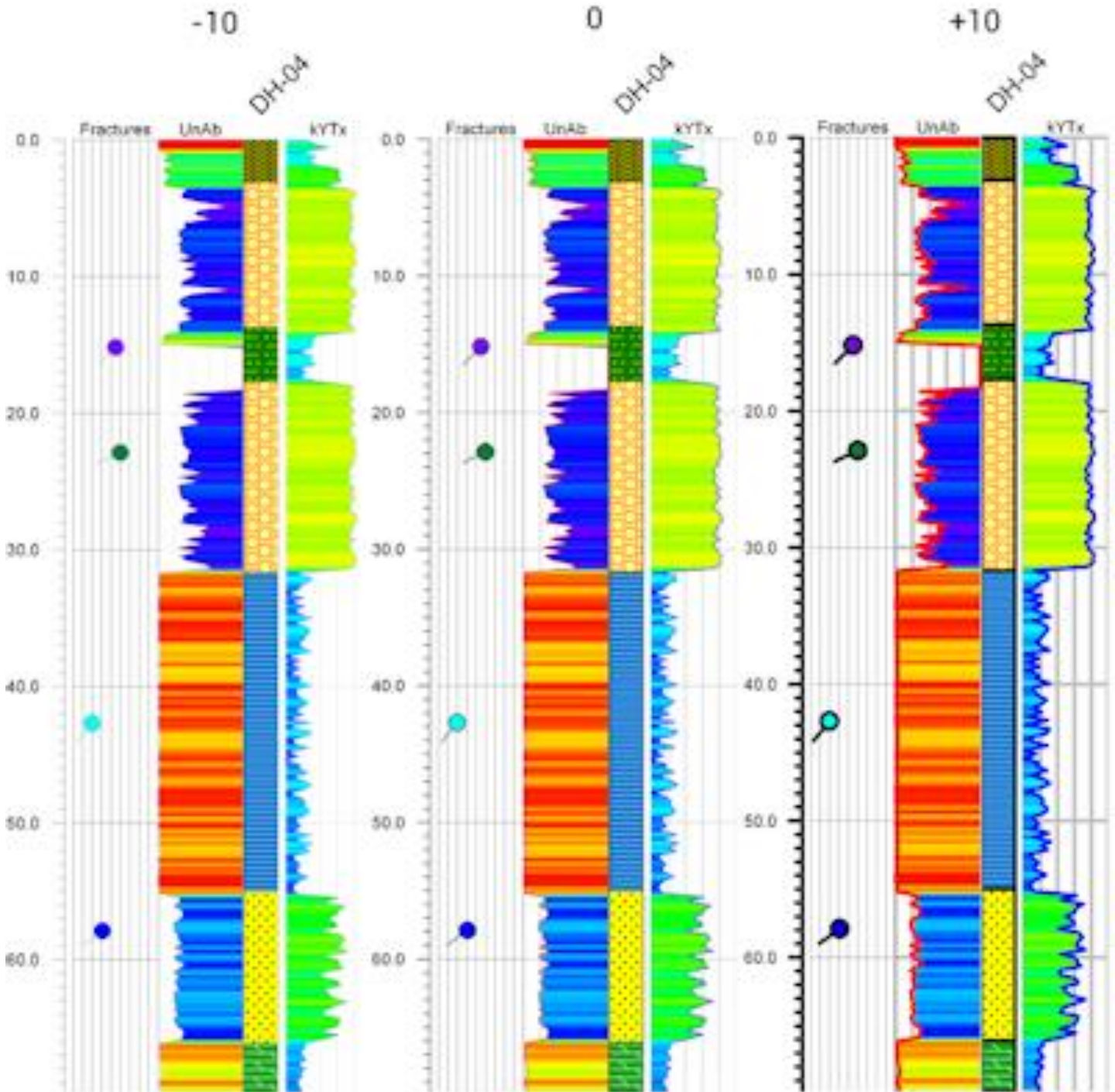


Line Widths & Resolution

When creating high-resolution images, line widths will be reduced in proportion to the increased resolution. If lines appear to be too thin within the final output, the **Line Width Adjustment** setting may be used to make the lines thicker or thinner. Note that the **Line Width Adjustment** may be set to a negative number.

Line Width Adjustment



Striplogs @ 300 DPI / 1200 Pixel Width