

Three improvements have been made to the frequency histograms created by the following RockWorks programs;

- Borehole Operations / I-Data / Histogram
- Borehole Operations / P-Data / Histogram
- Borehole Operations / P-Data / Histograms by Lithology
- Borehole Operations / T-Data / Histogram
- ModOps / Grid / Statistics / Histogram
- ModOps / Solid / Statistics / Histogram
- Utilities / Stats / Histogram
- Utilities / Stats / Histogram Matrix

1. The optional histogram summary annotation now lists the relative population percentages for the statistical categories (Figure 1).

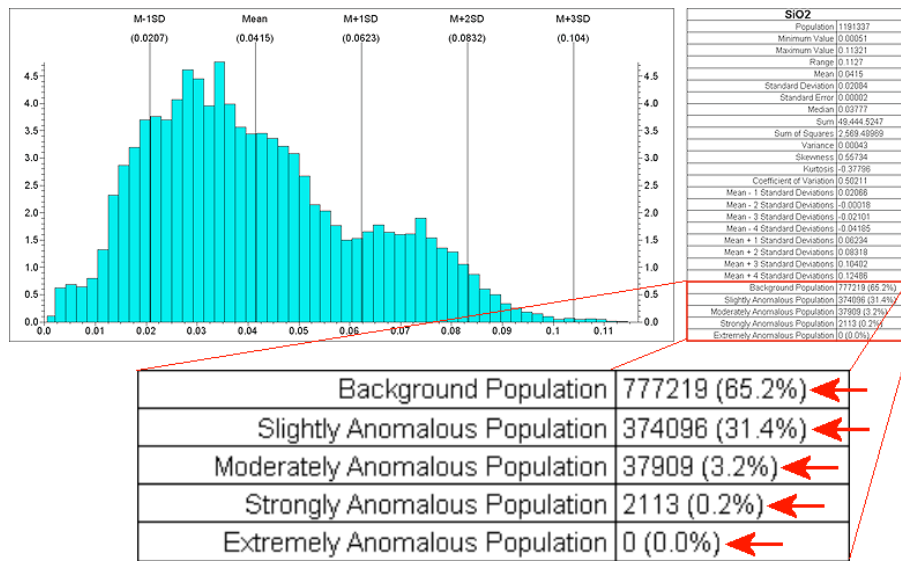


Figure 1

2. A new bin coloring scheme titled “Cold → Hot” has been added to the Bin Colors sub-menu (Figure 2). This will color-code the bins using a continuous color scheme that ranges from magenta to red.

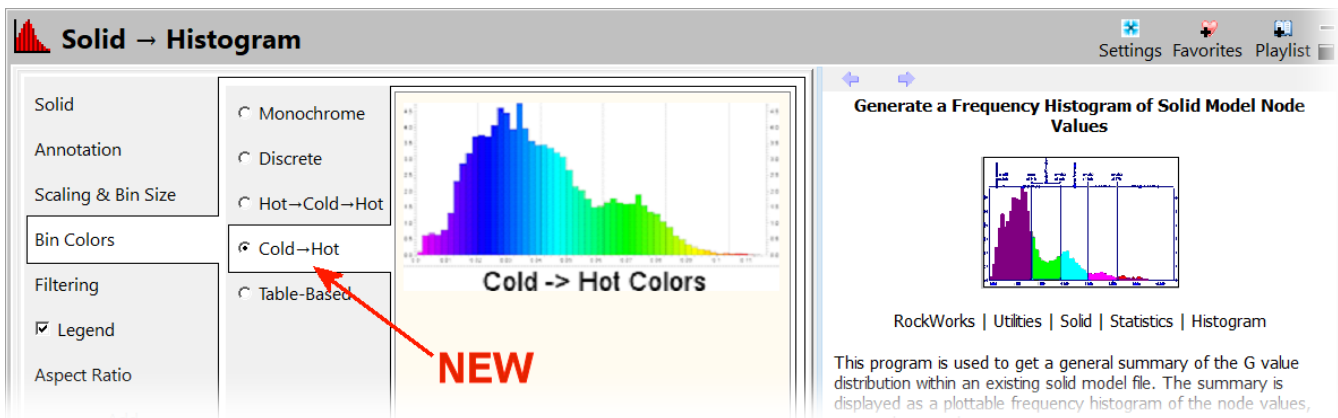


Figure 2

When plotted in conjunction with a contour map (Figure 3) or block diagram (Figure 4) that uses the same cold-to-hot color scheme, the histogram can serve as a color legend that expands the information conveyed by the contoured data.

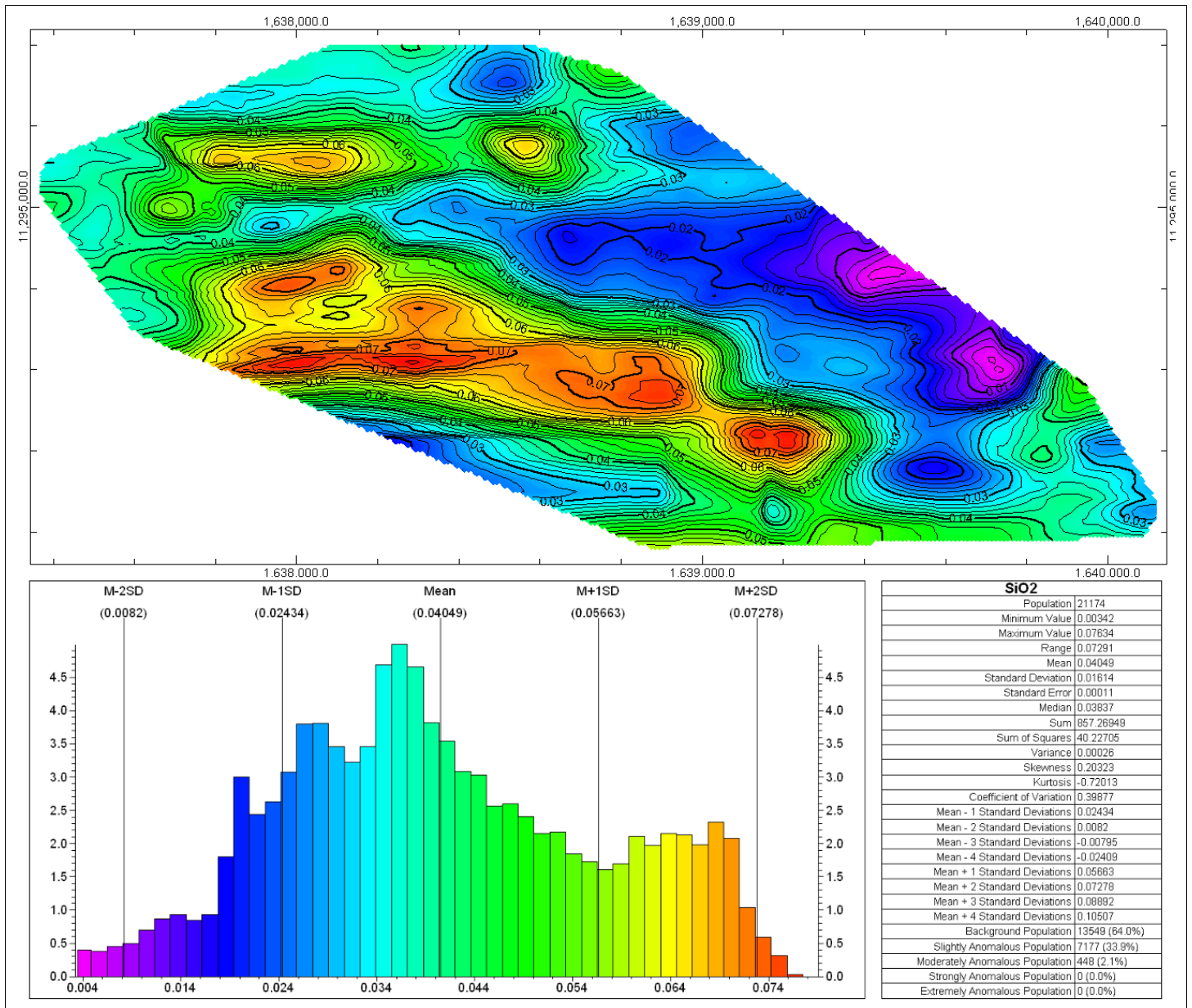


Figure 3

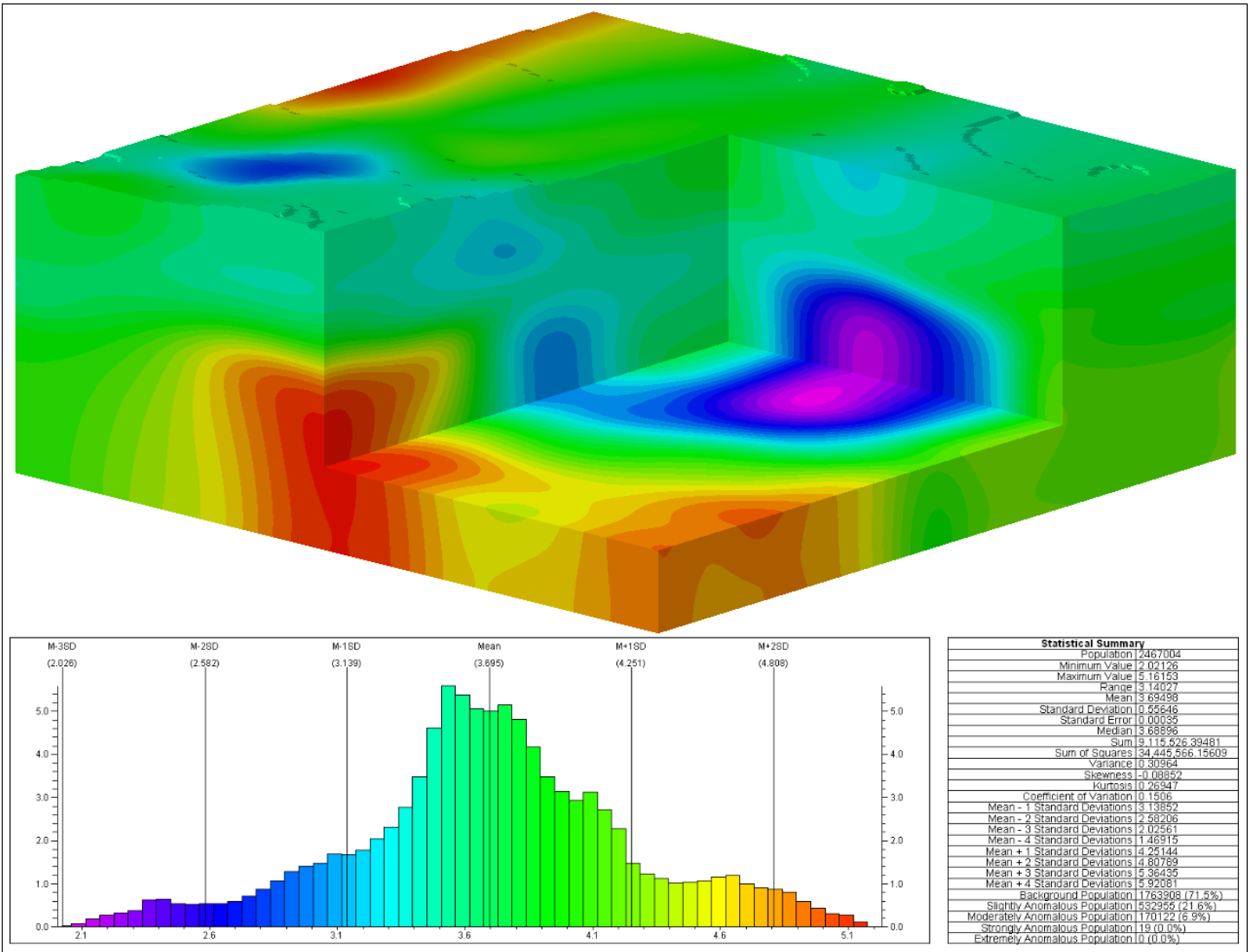


Figure 4

3. A new bin coloring scheme titled "Table-Based" has been added to the Bin Colors sub-menu (Figure 5). This will color-code the bins using a custom color table.

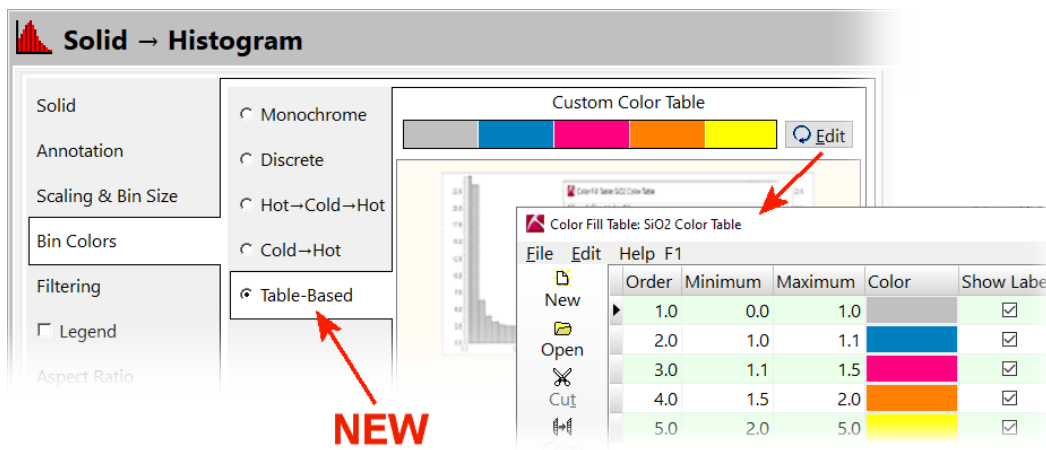


Figure 5

As with the previous example, when plotted in conjunction with a contour map or block diagram (Figure 6Figure 4) that uses the same cold-to-hot color scheme, the histogram can serve as a color legend that expands the information conveyed by the contoured data.

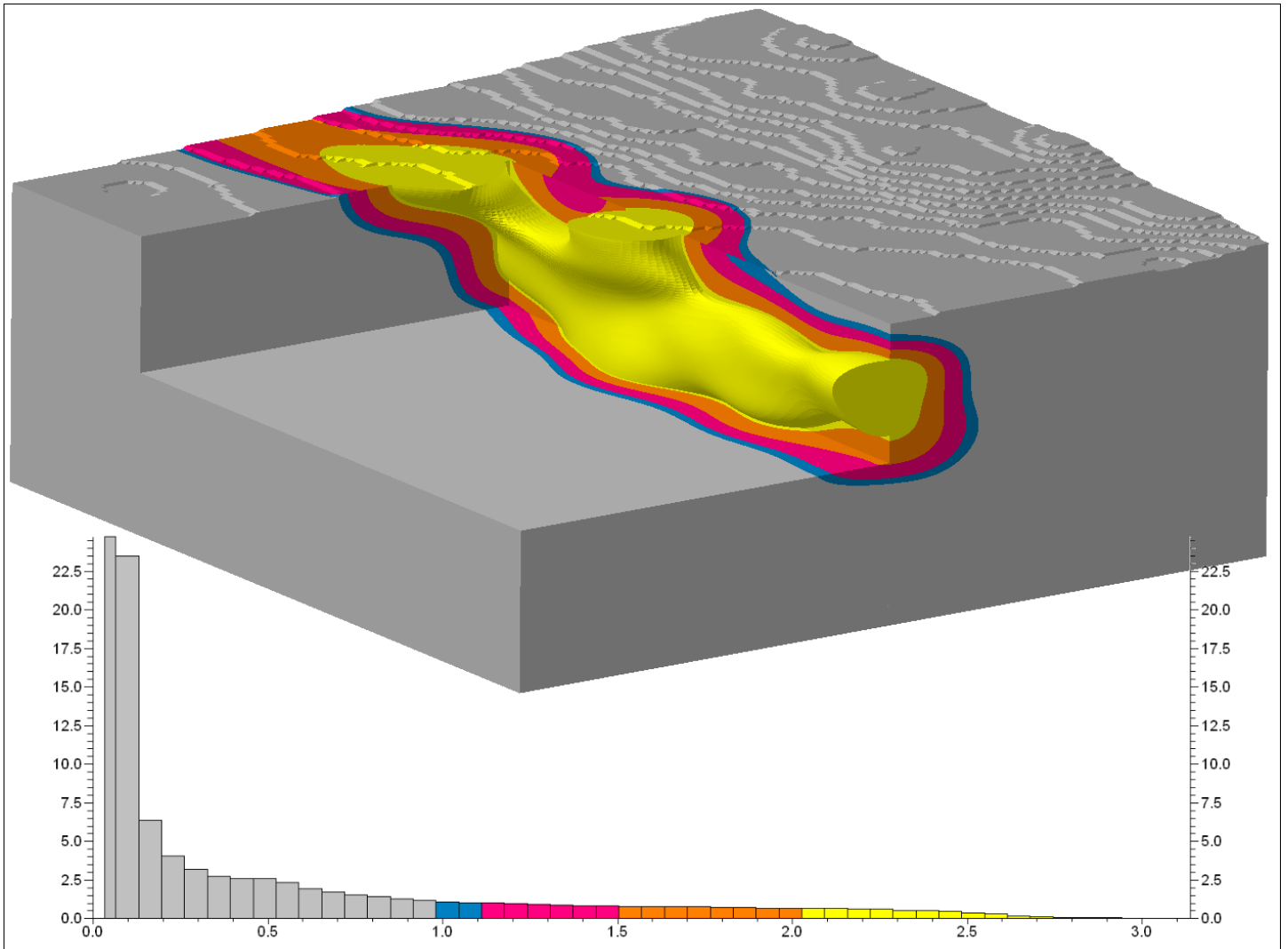


Figure 6