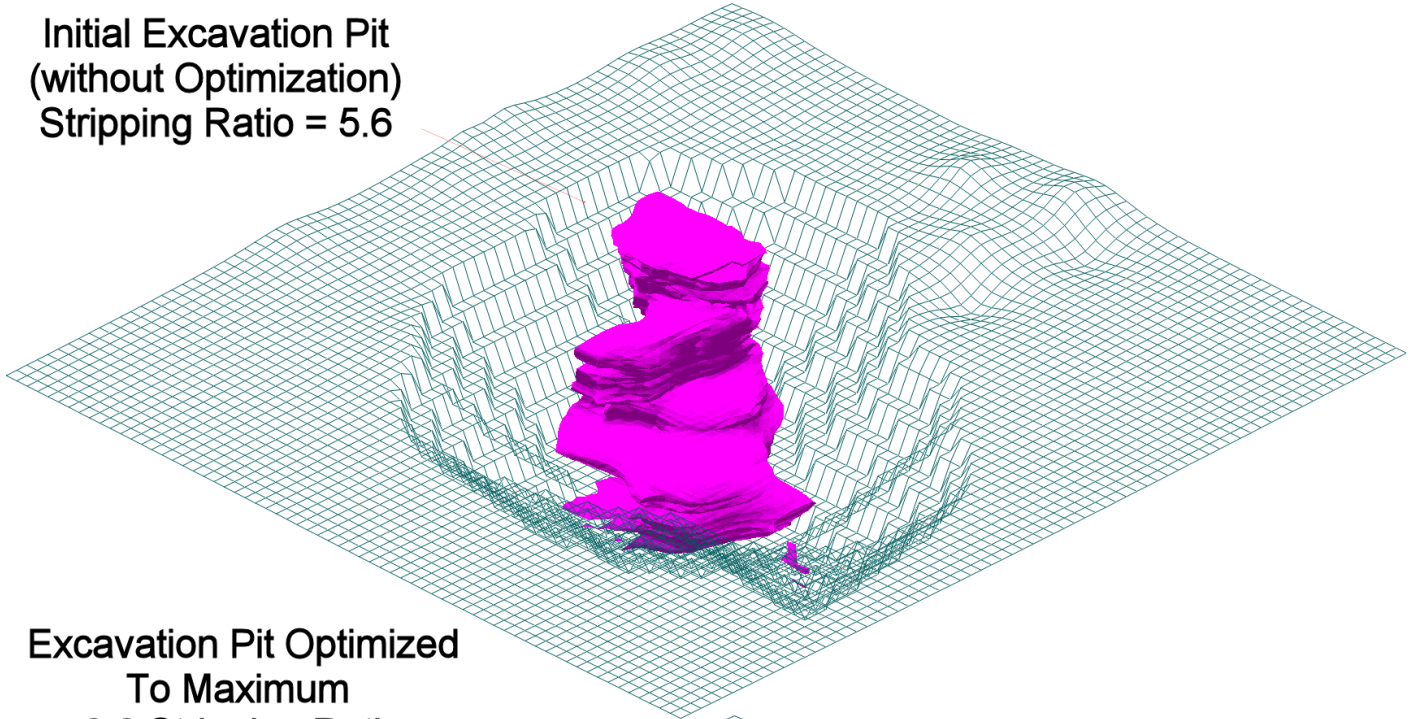


Optimize

The Maximum Acceptable Stripping Ratio (MASR) will be applied on a voxel-by-voxel basis. As a consequence, the stripping ratio for the entire excavation may exceed the MASR. If the Optimize option is checked and the stripping ratio for the entire excavation exceeds the MASR, the pit depth will be decreased by the Height Increment and the process will be repeated until the stripping ratio for the entire pits is less than or equal to the MASR.

Note: The Optimize option is not available if the Maximum Acceptable Stripping Ratio option has not been checked.

**Initial Excavation Pit
(without Optimization)
Stripping Ratio = 5.6**



**Excavation Pit Optimized
To Maximum
3.0 Stripping Ratio
(Final Stripping Ratio = 2.8)**

