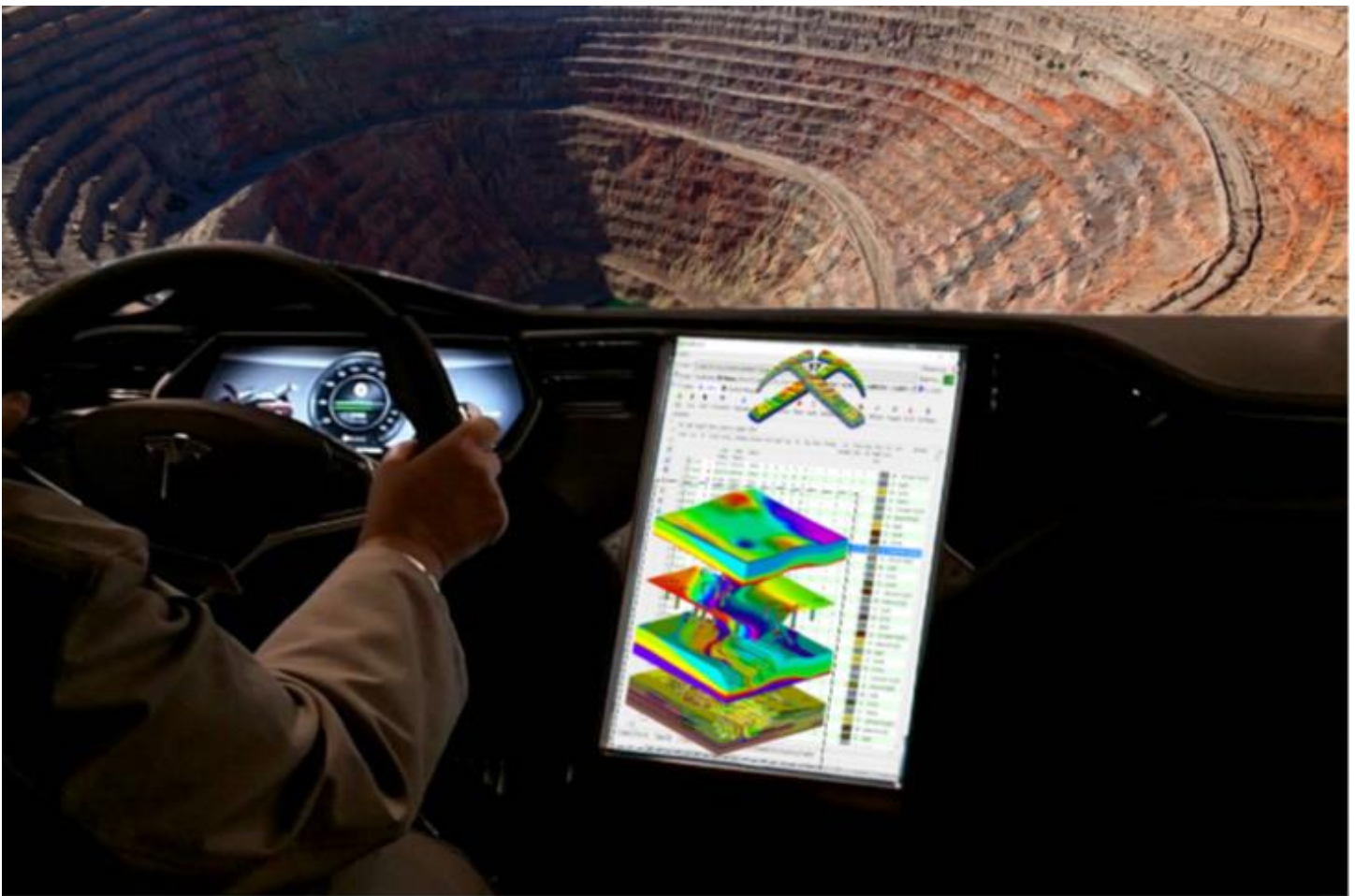


# Special Version of RockWorks17 Announced for Auto-Navigating Tesla Model S

Posted on [March 31, 2016](#) by [Jim Reed](#)

4/1/16: RockWare Incorporated (Golden, Colorado) announced today the immediate availability of an updated version of RockWorks17 that replaces the auto-navigation capabilities of the Tesla Model S.

Simply download RockWorks17 into the Tesla on-board computer, select the borehole, measured section, or outcrop of interest, and the software will automatically drive the vehicle, via direct line-of-sight, to the point of interest.



Now you can sit back and examine the geology as you're automatically driven to the exact field location (+/- 1 cm. accuracy) via the shortest possible route.

## RockWorks17 & the Tesla Model S - Ideally suited for ...

### Hydrological Samping ...



### Outcrop Sampling ...



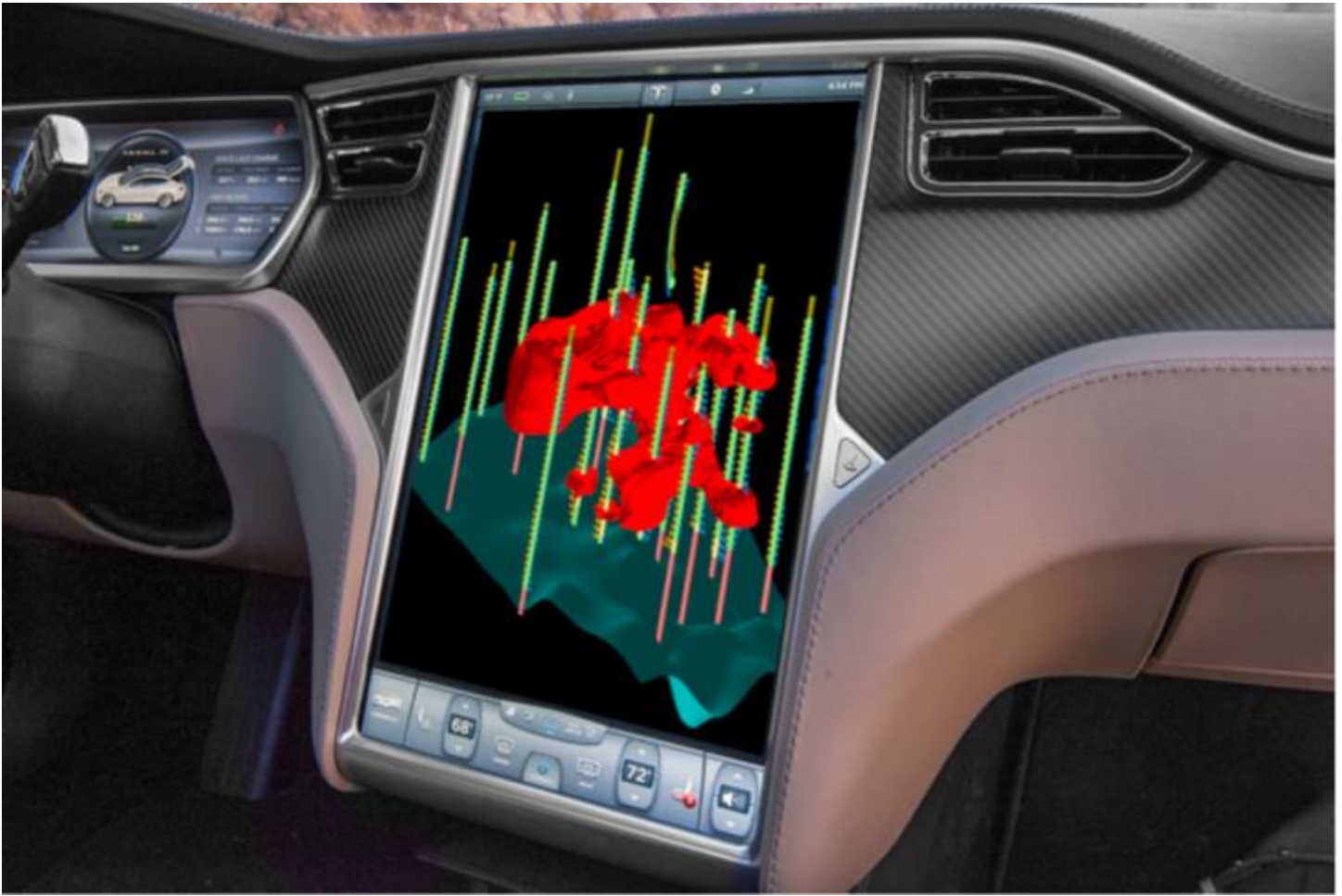
### Atmospheric Sampling ...



### Wellsite Work ...



The built-in speech pattern recognition allows for dictation of the on-site results to the on-board computer. Within minutes, the three-dimensional geometry of the contaminant plume, ore body, hydrocarbon reservoir, aquifer, etc. will appear on the dashboard computer.



**Coming Soon!** Optional direct-push probe attachment for rapid three-dimensional evaluation of toxic sites ...



Remember ... It's all about looking good in the field.

