

RW/03/15/26/JPR: The following improvements have been made to the *ModOps | Grid | Import | Raster* program.

- The program now provides a meaningful error message if the user is attempting to convert an image rather than an elevation model.

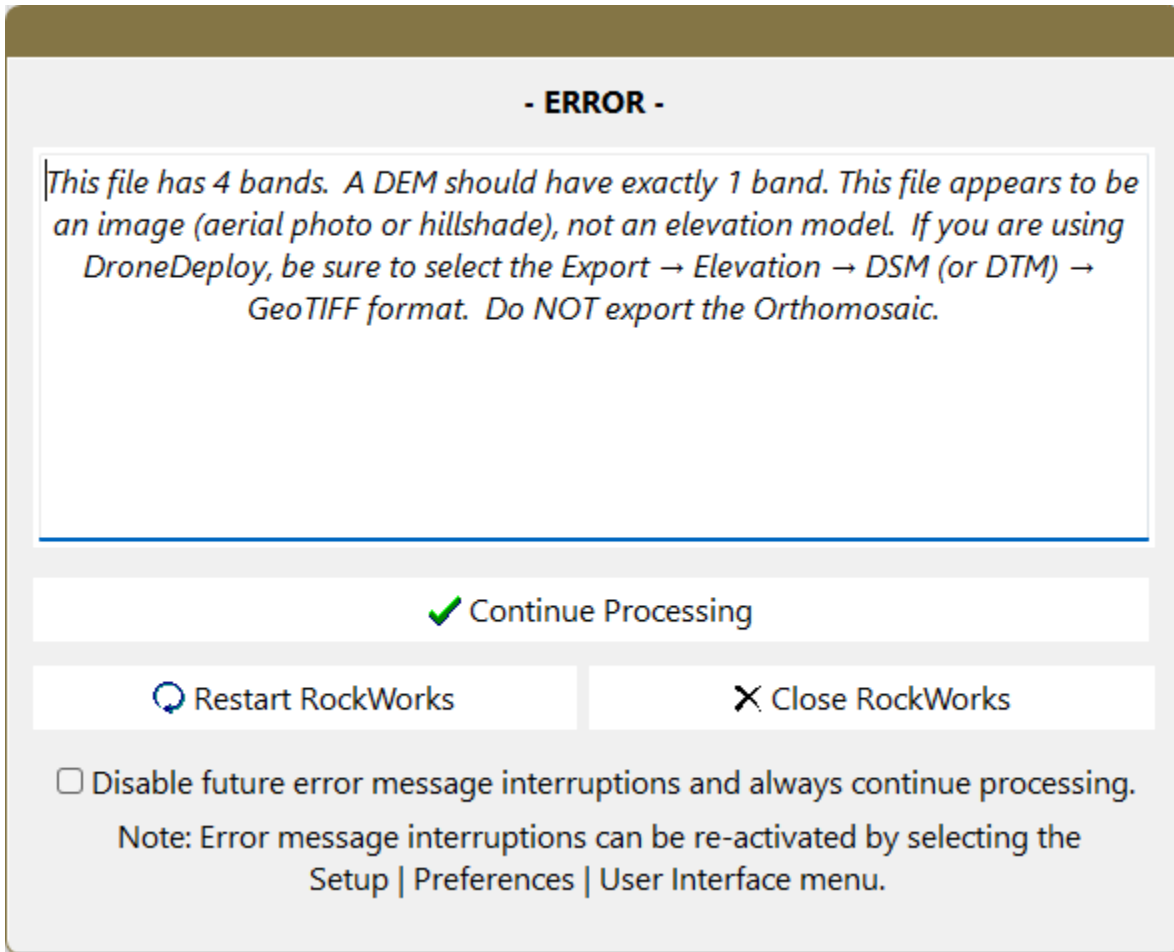


Figure 1

The program now provides an error message and terminates the processing if no points were found within the project area. This eliminates the subsequent plotting of a blank diagram.

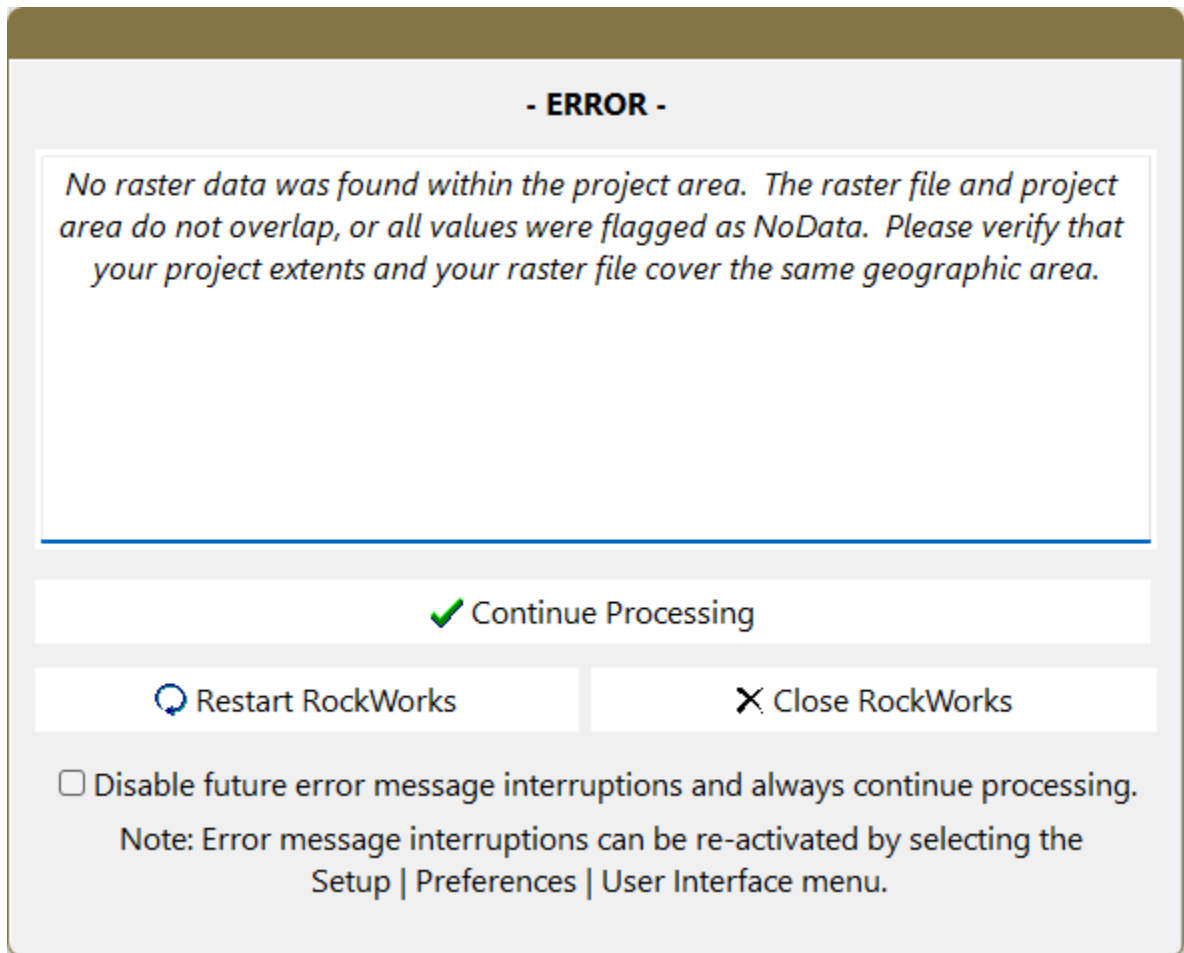


Figure 2

- A hint box (Figure 3) will now appear above the *Footprint* button when the mouse cursor is moved over it.

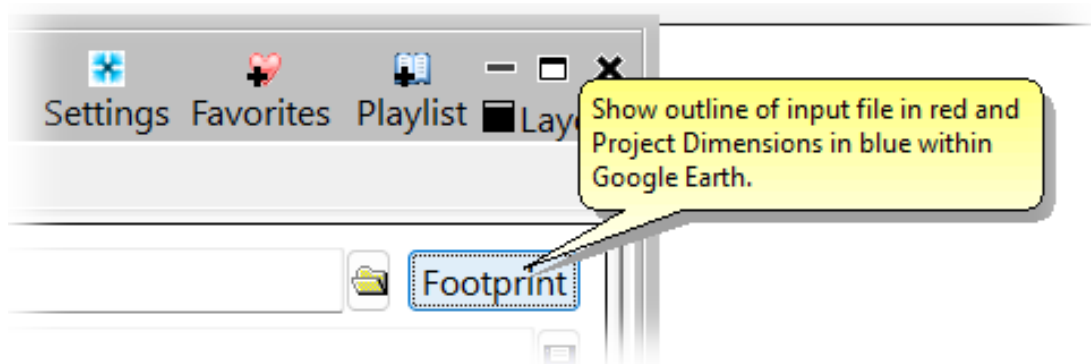


Figure 3

Ortho-Mosaics vs Digital Terrain Models (DTMs)

The Windows File Explorer (or a paint program) can be used to determine if a TIF file is an image (bad) or a DTM (good). If the preview looks like a color-coded elevation contour map, it's an image – which is bad. If the preview is black and white, it's a DTM – which is good. The example within Figure 4 depicts these non-intuitive guidelines.

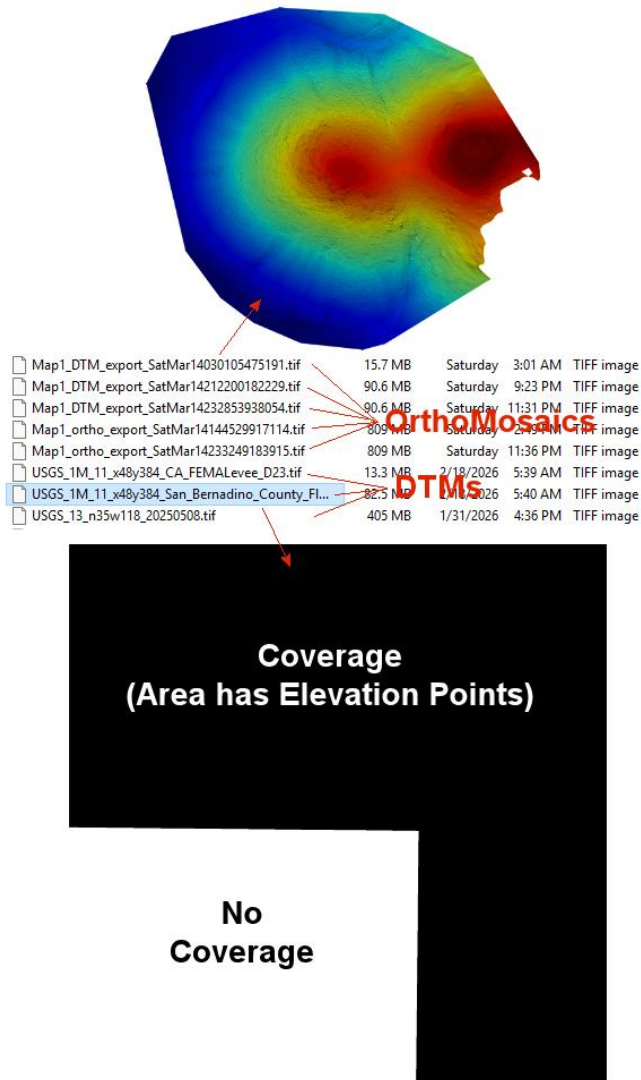


Figure 4