

A Quick & Easy Method for Creating P-Data Cross-Sections

12/11/22/JPR

Introduction

Creating block models from *P-Data* and slicing them into cross-sections can be a tedious and time-consuming process, especially when the goal is to simply obtain a general overview of the well-to-well variations for a particular *P-Data* track. In these situations, it may be desirable to perform a hole-to-hole interpolation rather than a model-based interpolation.

For each well within the selected section, starting at the left edge of the section, this program will create a grid between the well and the closest neighboring well to the right. The grid cell size in the horizontal dimension will be equal to 1% of the width of the entire section while the cell size in the vertical dimension will be equal to 1% of the project height. The cell nodes will then be interpolated based on the points within the two wells on either side of the grid using an inverse-distance squared algorithm.

Note: The Hole-to-Hole Interpolation program will not work with non-vertical boreholes.

Creating a Hole-To-Hole P-Data Interpolated Section

- Select the *Borehole Operations / P-Data / Section / Hole-to-Hole Interpolation* option.

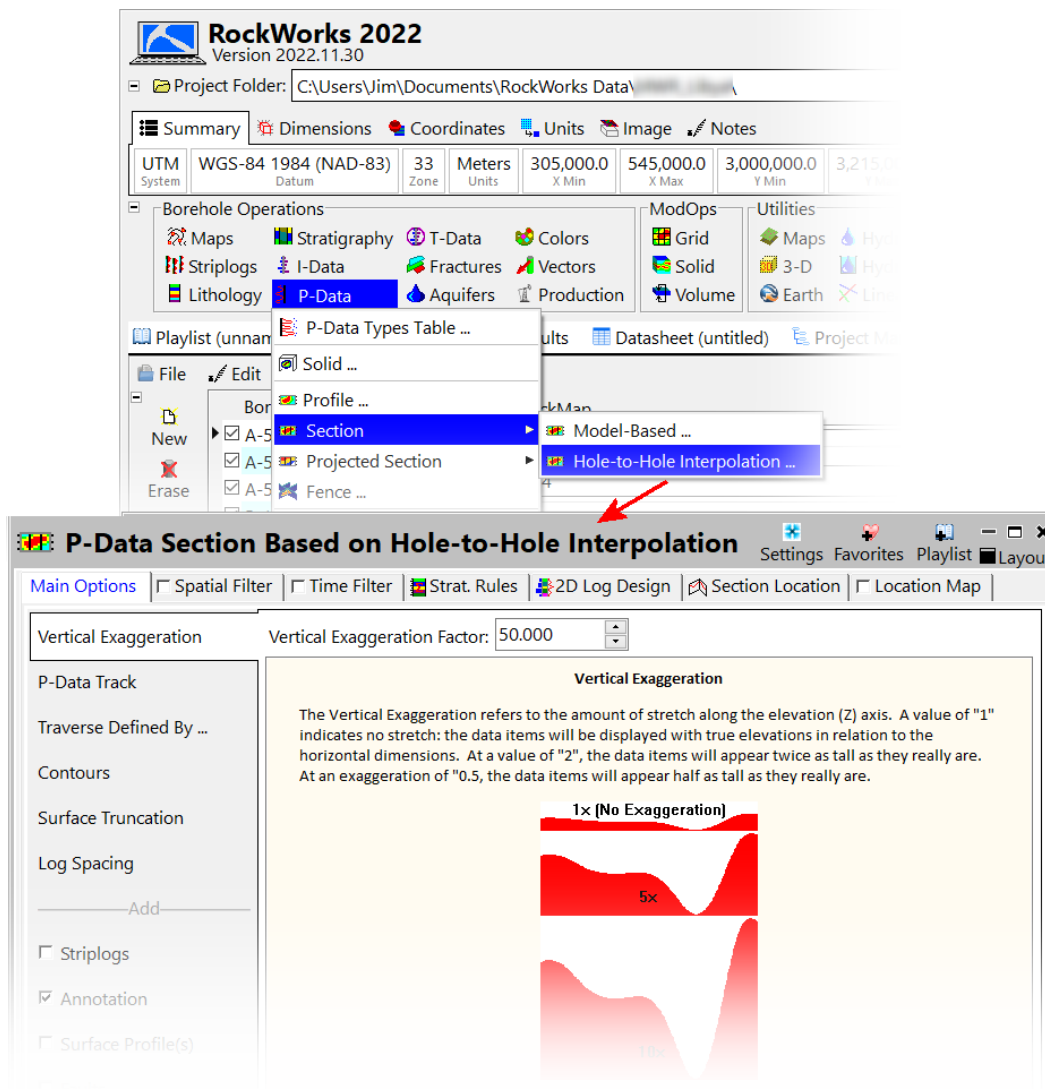


Figure 1

- Set the *Vertical Exaggeration*. In this example, it was set to 50X.
- Select the *P-Data* track to the data type that is to be modeled.
- If striplogs are to be superimposed on the section, select the *2D Log Design* tab at the top of the menu and configure the options to plot a curve for the selected track. Note: The track(s) selected within the *2D Log Design* tab has no influence upon what is being modeled.
- Select the *Section Location* tab and define where the section traverse (Figure 2).

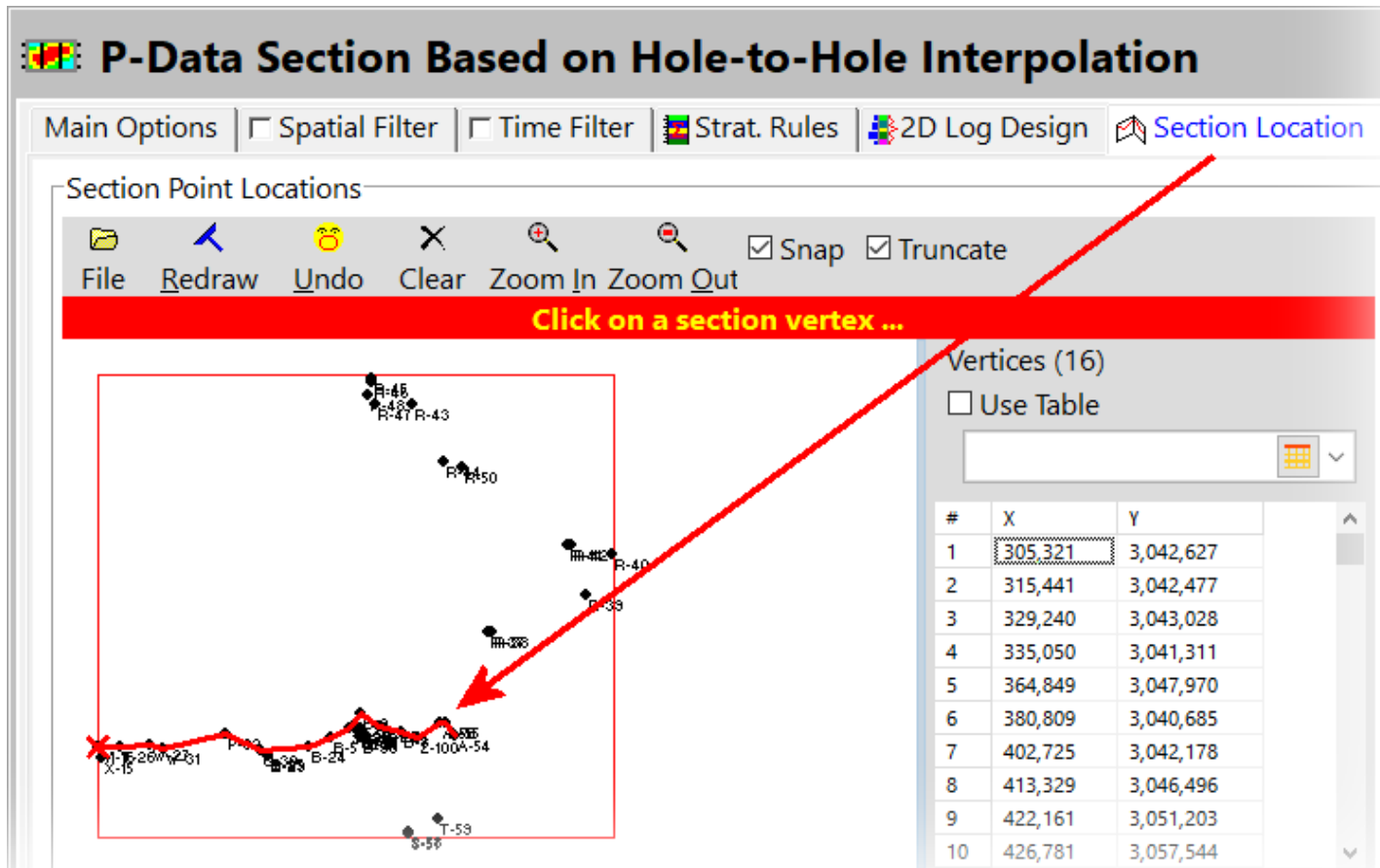


Figure 2

- The remaining options are described within the embedded documentation along the right side of the menu.
- Click on the Continue button and the section will be displayed (Figure 3).

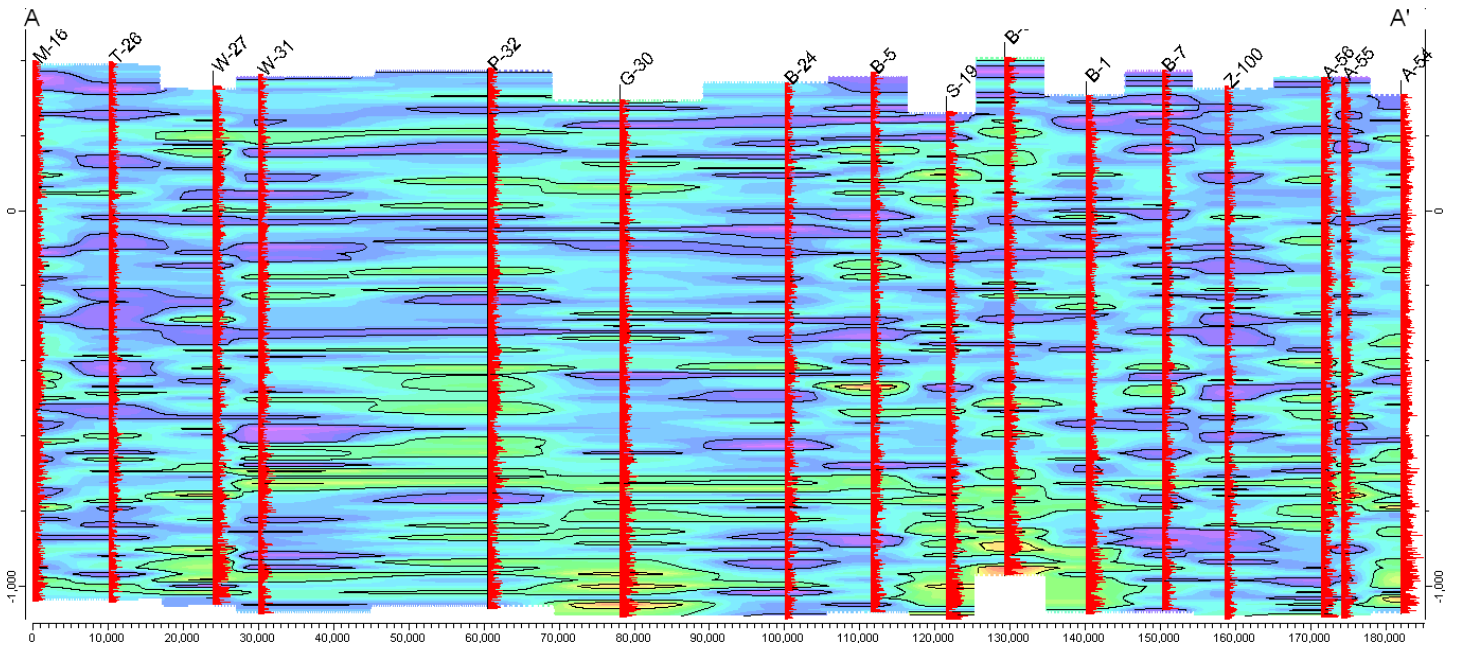


Figure 3