

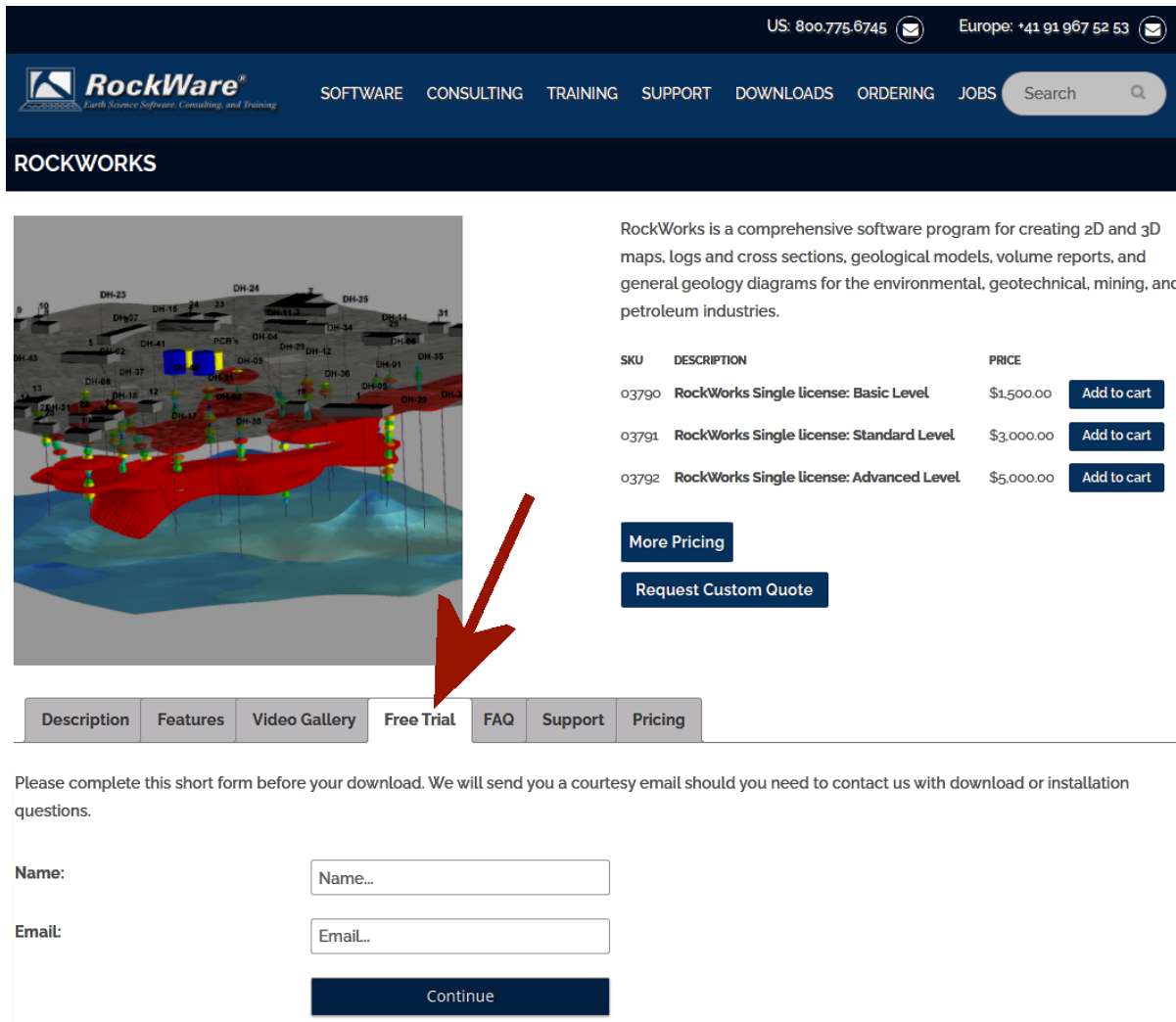
## Free Viewer for RockWorks 2D & 3D Diagrams

3/31/22

The free trial version of **RockWorks** includes tools for viewing 2D and 3D diagrams that have been generated by **RockWorks**. After the trial period has expired, the 2D and 3D viewers will still remain functional and can serve as free viewers in perpetuity.

To download the RockWorks trial version, click on this link -> [RockWorks](#)

Click on the tab labeled "**Free Trial**", enter your name and email address, and press the **Continue** button.



US: 800.775.6745 Europe: +41 91 967 52 53

**RockWare**  
Earth Science Software, Consulting, and Training

SOFTWARE CONSULTING TRAINING SUPPORT DOWNLOADS ORDERING JOBS Search

### ROCKWORKS

RockWorks is a comprehensive software program for creating 2D and 3D maps, logs and cross sections, geological models, volume reports, and general geology diagrams for the environmental, geotechnical, mining, and petroleum industries.

SKU	DESCRIPTION	PRICE	
03790	RockWorks Single license: Basic Level	\$1,500.00	<a href="#">Add to cart</a>
03791	RockWorks Single license: Standard Level	\$3,000.00	<a href="#">Add to cart</a>
03792	RockWorks Single license: Advanced Level	\$5,000.00	<a href="#">Add to cart</a>

[More Pricing](#)  
[Request Custom Quote](#)

[Description](#) [Features](#) [Video Gallery](#) [Free Trial](#) [FAQ](#) [Support](#) [Pricing](#)

Please complete this short form before your download. We will send you a courtesy email should you need to contact us with download or installation questions.

Name:

Email:

[Continue](#)

Scroll down and click on the **Download** button to the right of the RockWorks2022 button.

### Download Links

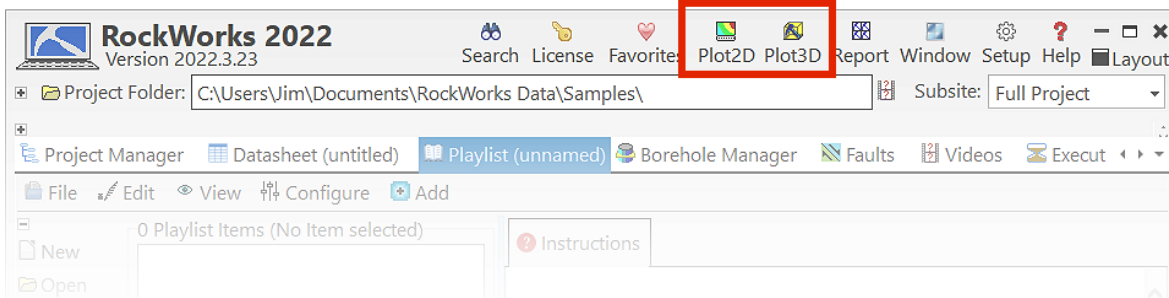


RockWorks2022 – **NEW!** – 64-bit: [DOWNLOAD](#)

Once the download has completed and the program has been installed on your computer ...

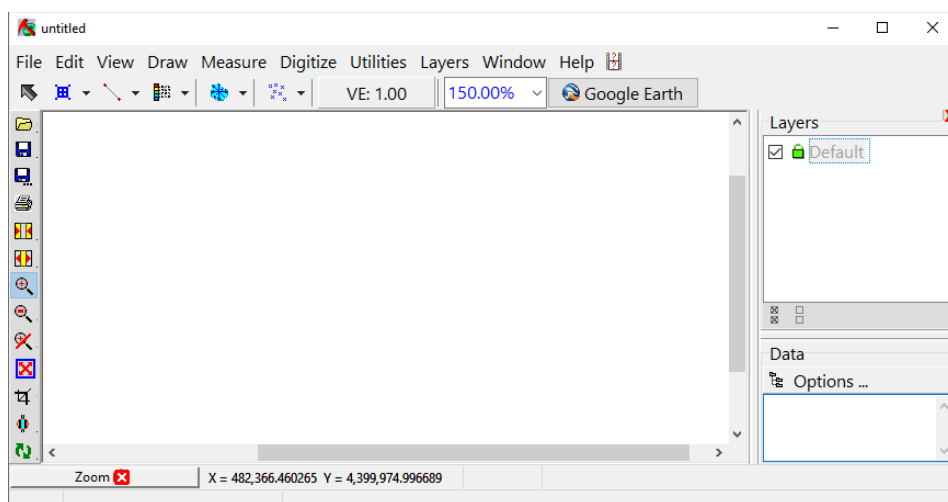
The simplest way to view a RockWorks 2D or 3D file is to double-click on the file name within the Windows File Explorer. This will automatically launch RockWorks (if isn't already running) and load the file into the appropriate application. If the file has a "Rw2D" suffix the file will be displayed within the **Plot2D** application. If the file has a "Rw3D" suffix, the file will be displayed within the **Plot3D** application.

Alternately, launch RockWorks and notice the **Plot2D** and **Plot3D** buttons at the top of the main menu.

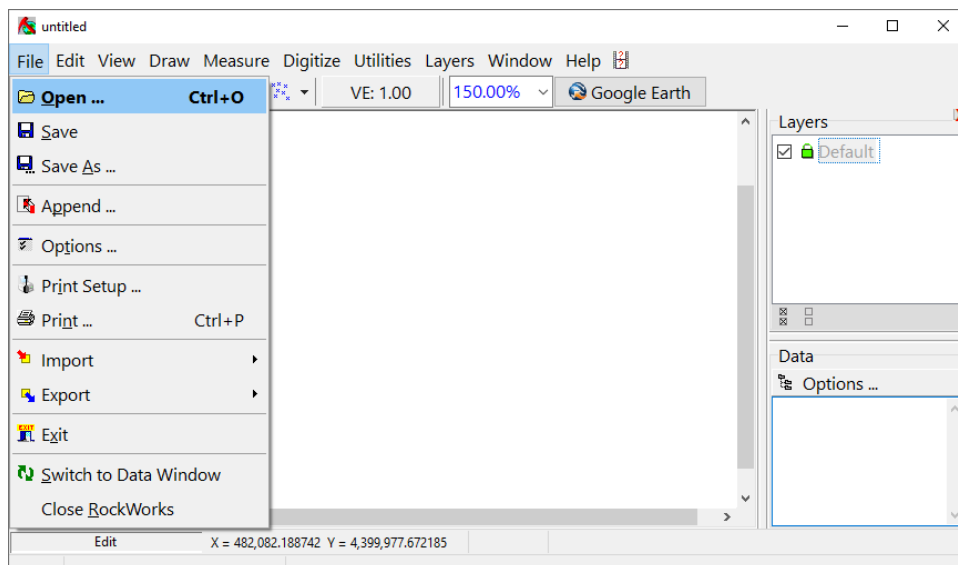


## 2D Diagrams

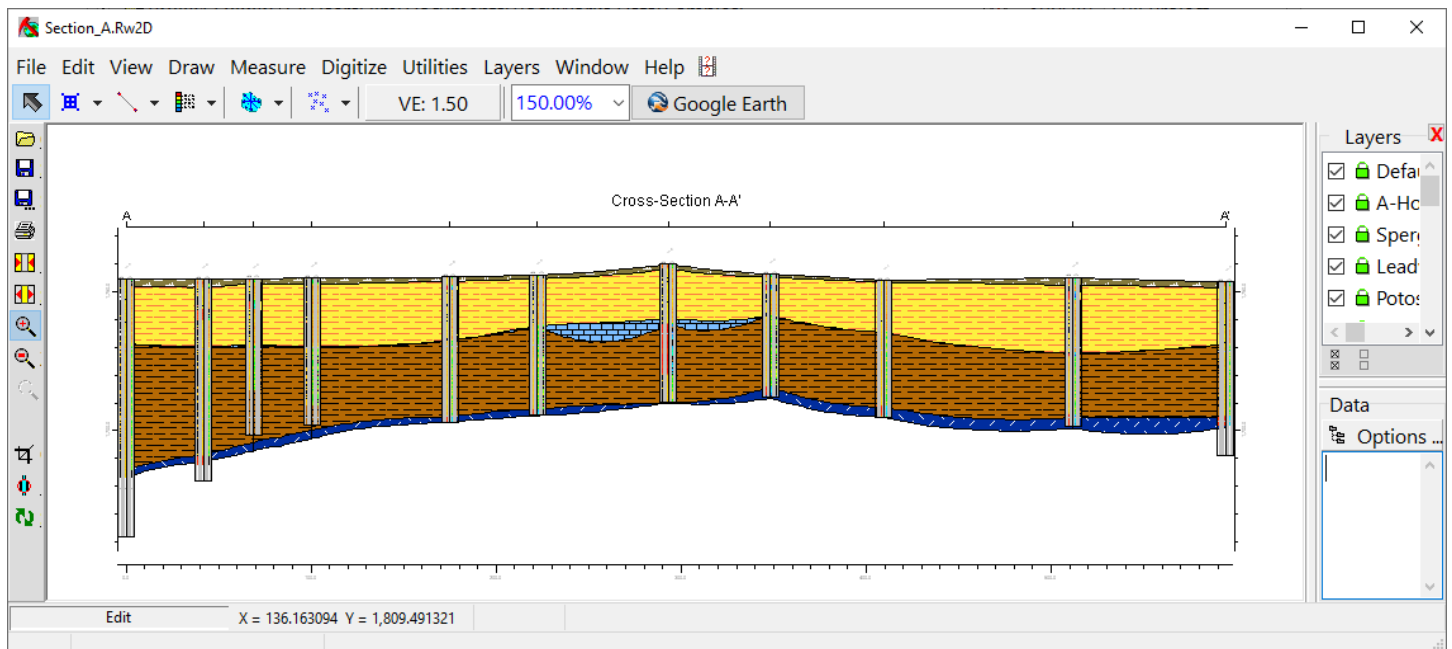
If you are trying to view a 2D diagram (i.e., files with a ".Rw2D" suffix) click on the **Plot2D** button. This will display the **Plot2D** program menu.



Click on the **File / Open** option and select the **Rw2D** file that you want to view and/or manipulate.



The selected diagram will now appear within the **Plot2D** viewing window.



For detailed instructions about all of the things that can be done with the diagram (e.g., printing, exporting, changing coordinate systems, adding items, etc.), click on the **Help** button at the top of the **Plot2D** menu.

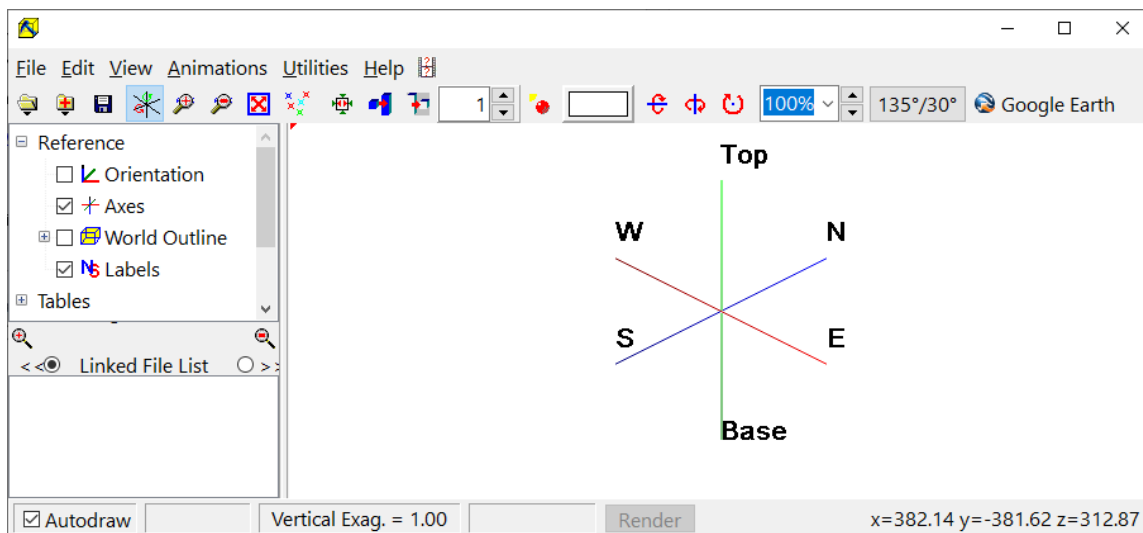
Additional information about the **Plot2D** program and an instructional video can be found here:

<https://www.rockware.com/rockworks-graphic-output/>

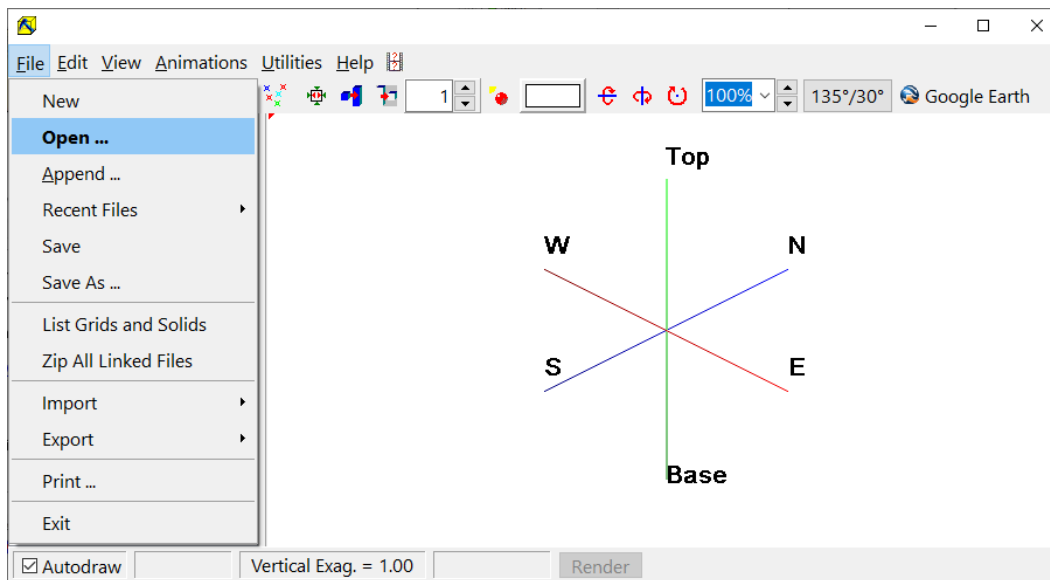
An alternate method for using the free viewer to examine a 2D RockWorks diagram is to simply double-click on the file name within the Windows File Explorer. This will automatically launch RockWorks (if it isn't already running) and load the file into the **Plot2D** display window.

### 3D Diagrams

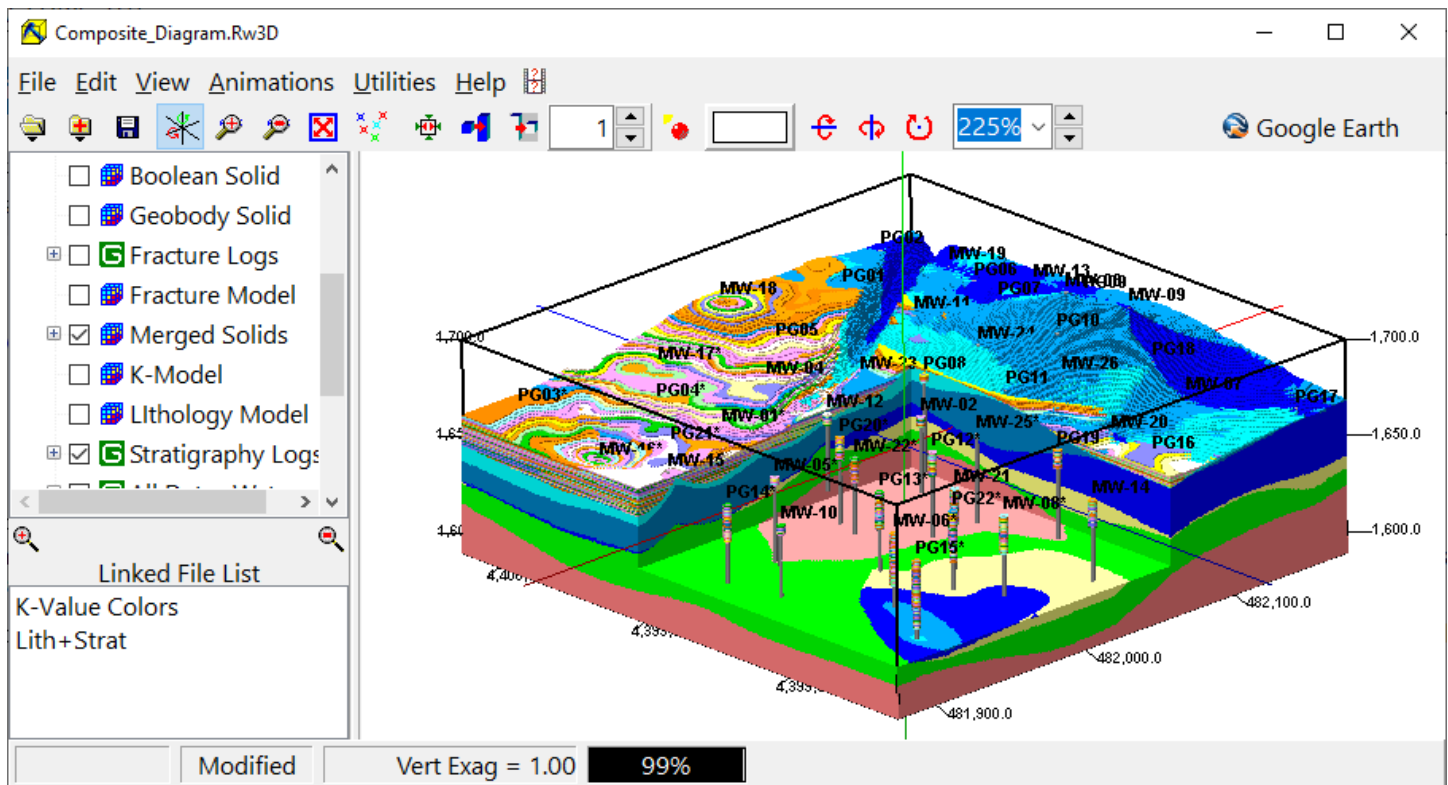
If you are trying to view a 3D diagram (i.e., files with a ".Rw3D" suffix) click on the **Plot3D** button. This will display the **Plot3D** program menu.



Click on the **File / Open** option and select the **Rw3D** file that you want to view and/or manipulate.



The selected diagram will now appear within the **Plot3D** viewing window.



For detailed instructions about all of the things that can be done with the diagram (e.g., printing, exporting, changing coordinate systems, adding items, etc.), click on the **Help** button at the top of the **Plot3D** menu.

Additional information about the **Plot3D** program and an instructional video can be found here:

<https://www.rockware.com/rockworks-graphic-output/>