

# 2-D VS 3D DATA

*Dimensions* refers to the number of independent variables.

Jim Reed  
RockWare Incorporated  
Golden, Colorado

# Nomenclature (continued)

1  
Dimensional  
Data

Month	Water Level
9/19/2004	145
10/3/1999	113
11/15/1999	131
12/11/1999	160
1/21/2000	142
2/1/2000	96
3/7/2000	187

2  
Dimensional  
Data

Easting	Northing	Elevation
652785	5535006	492
652965	5535000	414
653152	5535010	455
652700	5535071	441
652792	5535071	419
652882	5535070	447
653059	5535084	443

3  
Dimensional  
Data

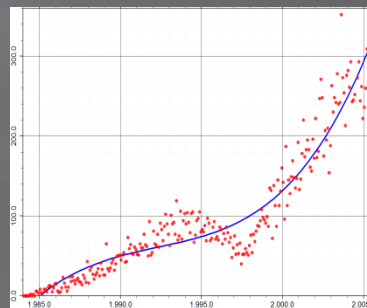
Easting	Northing	Elevation	Gold (ppm)
652764	5535088	1,213.00	70.7
653481	5535612	1,397.10	7.6
652927	5535201	1,225.40	32.1
653029	5535766	1,210.00	62.5
652827	5535180	1,410.90	19.4
653271	5535629	1,282.80	82.9
653374	5535702	1,278.40	84.9
652801	5535785	1,425.00	99.5

Data

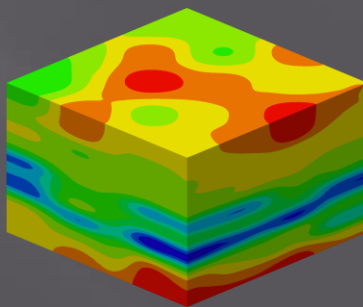
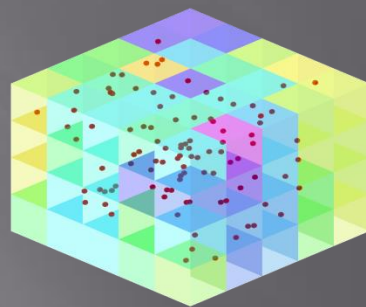
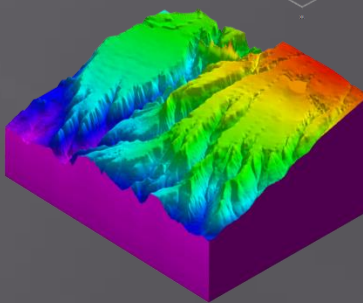
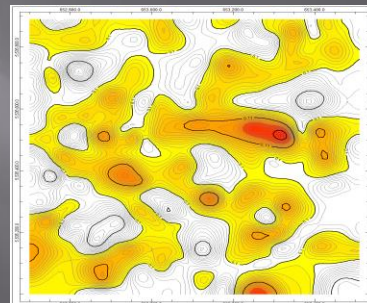
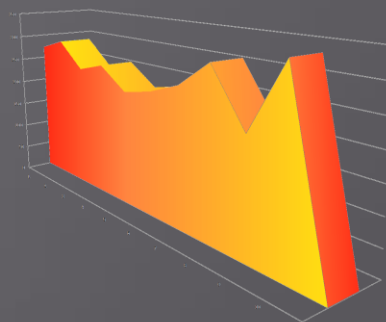
Models

$$Y = -23.1X + 17.6X^2 - 5.9X^3 + 11.3$$

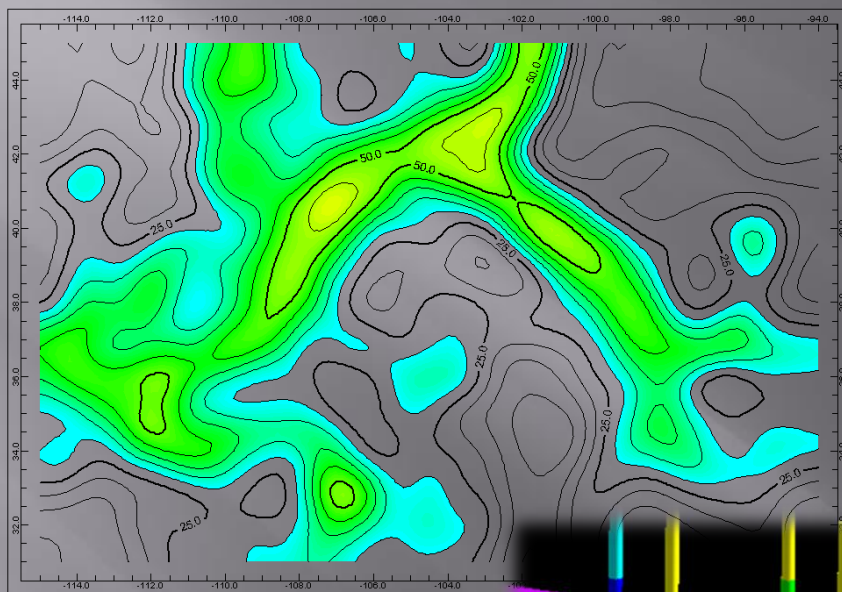
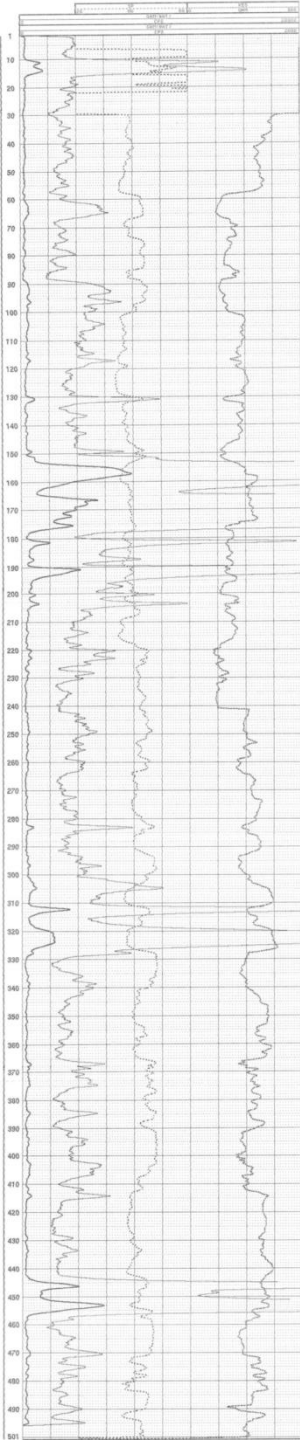
2  
Dimensional  
Diagrams



3  
Dimensional  
Diagrams



# Converting Uranium Log Data To Meaningful Reserves



2-Dimensional  
vs.  
3-Dimensional

