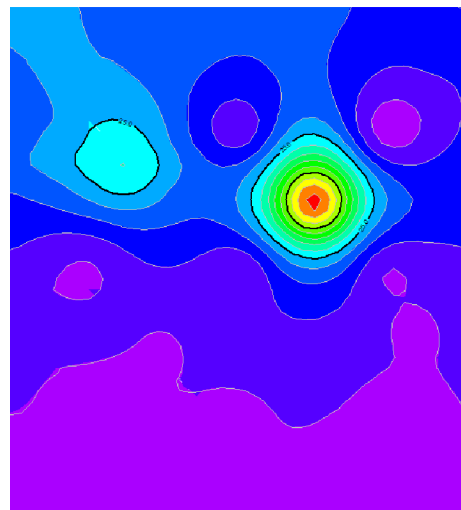
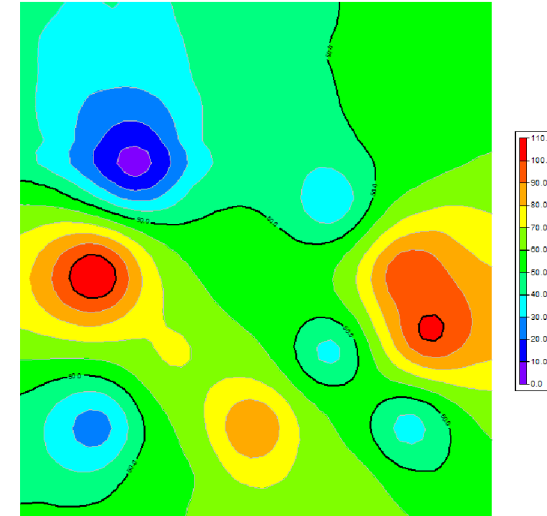


Na (0 - 190)



K(0 - 70)



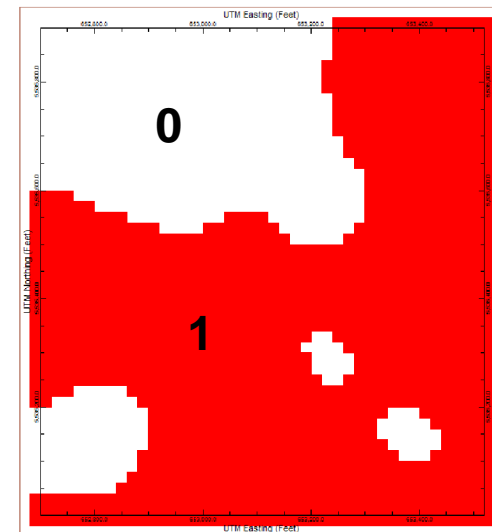
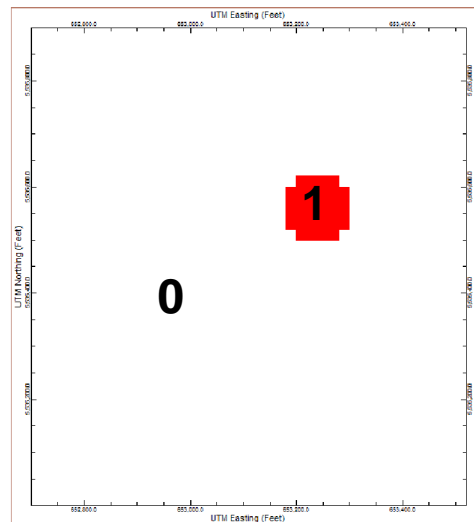
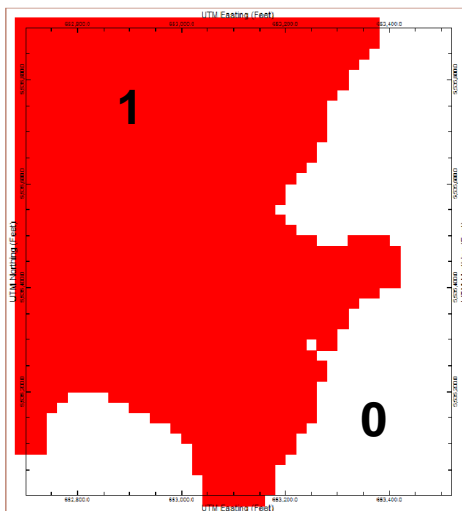
Ca (0 - 110)

# Boolean Logic

If Na > 50 then x=1  
Else, x=0

If K > 50 then x=1  
Else, x=0

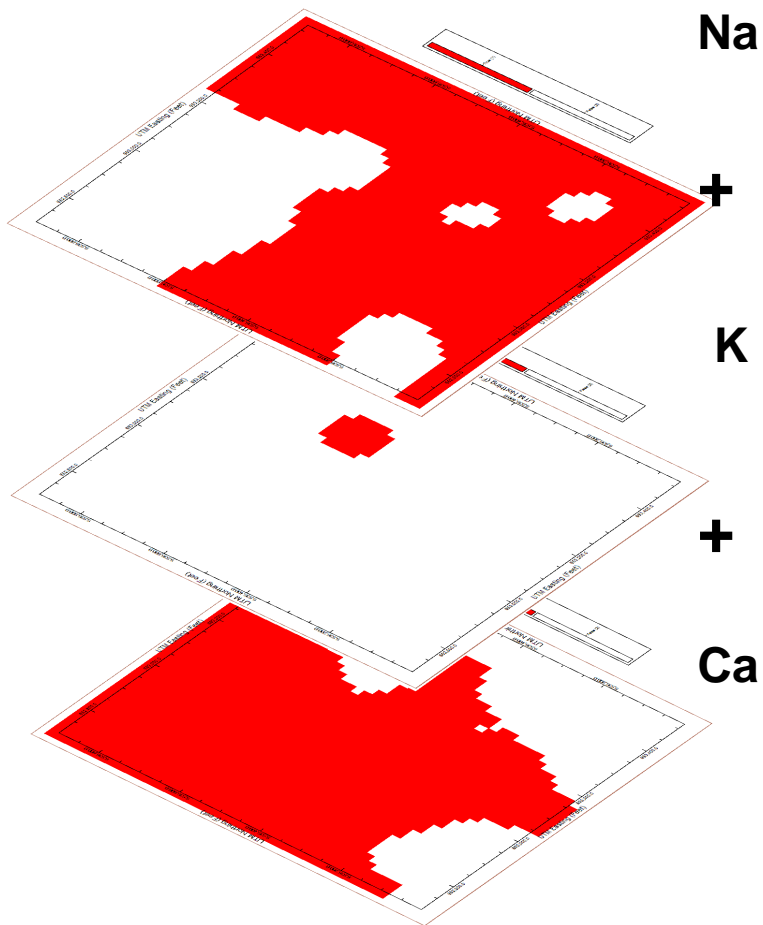
If Ca > 50 then x=1  
Else, x=0



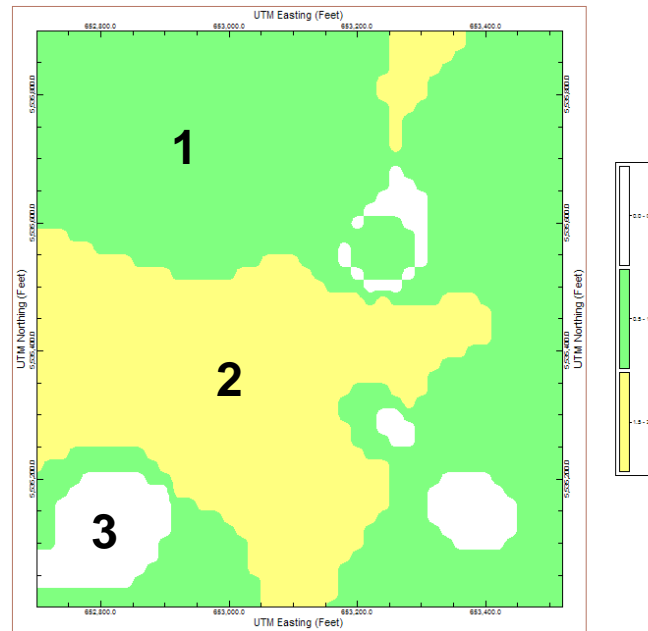
# OR statements

Where is  $\text{Na} > 50$  OR  $\text{K} > 50$  OR  $\text{Ca} > 50$ ?

## Grid Addition



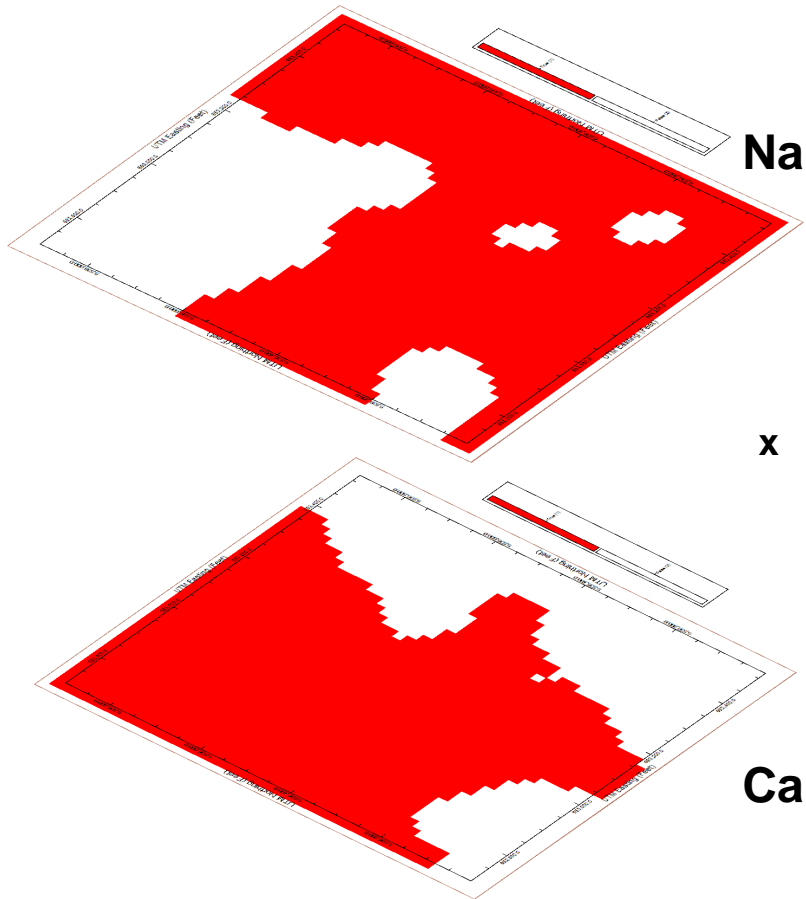
=



# AND statements

Where is  $Na > 50$  AND  $Ca > 50$ ?

## Grid Multiplication



x =

