

Quick Start - RockWorks17, Single License

Installing RockWorks17

You must have **Administrator** privileges to **install and license** RockWorks17. The program installs as a "Trial" version which can be unlocked to turn off the trial's day/use counter.

1. Visit www.rockware.com and click on the **Downloads | Demos** menu item, along the top of the page.
2. Scroll down to the **RockWorks17** item and click the **Download** link.
3. On the next screen, fill in your **name** and **email**, click the **captcha** box, and click **Send**.
4. Click the **Download** link for the 64- or 32-bit version. (64-bit recommended, requires 64-bit version of Windows)
5. **Save** the installation program to your computer.
6. When the download is complete, double-click on the installation file to **run** the installation. Follow the recommended installation settings.

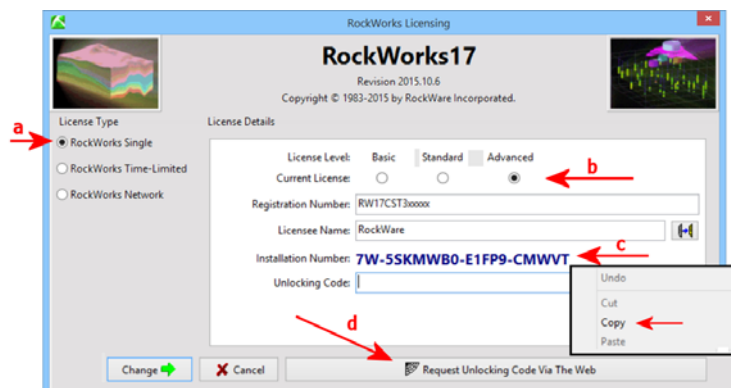
Licensing RockWorks17

Visit our website (www.rockware.com), Support | RockWorks | Set Up Licensing for instructional videos.

1. When installation is complete, start the program. You'll see a window with the days/uses that remain in your fully-functional Trial period.
2. If you want to set up the licensing at this time, click the **Set Up Licensing** button. (Also available in the Home | Licensing window.) (If you want to use the program in Trial mode, click the **Continue to RockWorks** button.)
3. In the **RockWorks Licensing window**:
 - a. **License Type**: On the left side of the window, choose **RockWorks Single**.
 - b. **License Level**: At the top of the window, click in the radio button for the feature level you purchased. This will be shown in your sales receipt and reflected in your registration number. Choose from **Basic**, **Standard**, or **Advanced**.
 - c. **Installation Number**: **Right-click** on this long set of numbers and letters and choose **Copy**. We will use this to calculate your unique unlocking code.
 - d. **Request Unlocking Code via the Web**: Click this button; you'll be delivered to RockWare's web registration page.

Customer Portal: Use this link at the top of the page to request a real-time unlocking code via the RockWare Customer Portal. First time visitors will need to create an account with your **email** and **Registration Number** (issued at time of purchase). Existing Portal users can log in with their username and password. Once logged in, locate the license being unlocked, click the **Unlock** button, and supply the requested information. Refer to the **HELP** video for information.

Registration Form: Otherwise, use this form to request your unlocking code via email. Supply your **Registration Number** (issued at time of purchase), the **Installation Number** and your **contact information**. We'll reply within one business day via email with the unlocking code. (If there's a time lag until you receive the unlocking code, you can use the program fully-functionally in trial mode as described in #2 above.)



4. Unlock the program: When you receive your unlocking code from RockWare, start RockWorks, click **Set Up Licensing**, and fill in the prompts – **Level**, **Registration Number**, **Licensee Name** (your name or company name), and **Unlocking Code**.
5. Click the **Change** button. The RockWorks program window will be displayed, with the licensing status displayed in the lower-right corner.

Getting Help

- Run through the **Tutorial** lessons via the Help | Tutorials topics – click on the **?** button at the top-right corner of the program window.
- Refer to the **Instructions** tab which is displayed in each of the program's options window.
- Select the Help | Contents menu option (via the **?** button) to access the **Help messages** for RockWorks.
- Join the online **support forum** where users post questions and answers, accessible via **Help (?)** | Support | User Group Forum.
- Contact our **technical support staff** at 303-278-3534, or email us at tech@rockware.com.