

Quick Start – LogPlot8, Single License

Installing LogPlot8

You must have **Administrator** privileges to **install and license** LogPlot8. The program installs as a "Trial" version which can be unlocked to turn off the trial's day/use counter.

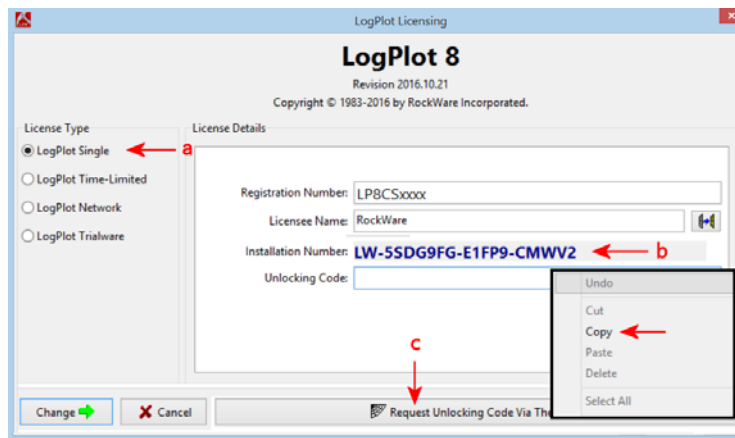
1. Visit www.rockware.com and click on the **Downloads | Demos** menu item, along the top of the page.
2. Scroll down to the **LogPlot8** item and click the **Download** link.
3. On the next screen, fill in your **name** and **email**, click the **captcha** box, and click **Send**.
4. Click the **Download** link for the 64- or 32-bit version. (64-bit recommended, requires 64-bit version of Windows)
5. **Save** the installation program to your computer.
6. When the download is complete, **double-click** on the installation file to start the installation. Follow the recommended installation settings.

Licensing LogPlot8

1. When installation is complete, start the program. The main LogPlot window will be displayed.
2. To set up the licensing at this time, click the **Help** menu and select **Change Licensing**.
3. In the **LogPlot Licensing window**:
 - a. **License Type**: On the left side of the window, choose **LogPlot Single**.
 - b. **Installation Number**: **Right-click** on this long set of numbers and letters and choose **Copy**. We will use this to calculate your unique unlocking code.
 - c. **Request Unlocking Code via the Web**: Click this button and you will be delivered to RockWare's web registration page.

Customer Portal: Use this link at the top of the page to request a real-time unlocking code via the RockWare Customer Portal. First time visitors will need to create an account with your **email** and **Registration Number** (issued at time of purchase). Existing Portal users can log in with their username and password. Once logged in, locate the license being unlocked, click the **Unlock** button, and supply the requested information. Refer to the **HELP** video for information.

Registration Form: Otherwise, use this form to request your unlocking code via email. Supply your **Registration Number** (issued at time of purchase), the **Installation Number** and your **contact information**. We'll reply within one business day via email with the unlocking code. (If there's a time lag until you receive the unlocking code, you can use the program fully-functionally in trial mode.)



4. **Unlock the program**: When you receive your unlocking code from RockWare online or via email, start LogPlot. Click **Help | Change Licensing**, and fill in the prompts – **Registration Number**, **Licensee Name** (your name or company name), and **Unlocking Code**.
5. Click the **Change** button. The licensing status will be displayed in the title bar at the top of the program window.

Getting Help

- Run through the **Tutorial** lessons: Click the **Help | Contents** menu and the Help system will load into your browser. On the Welcome page, click **Tutorial Lessons**.
- Click on the **Help** button in the program options windows: In your browser you will see the help topic specific to that option.
- Join the online **support forum** where users post questions and answers: Visit www.rockware.com, click **Support | Support Forums**.
- Contact our **technical support staff** at 303-278-3534, or email us at tech@rockware.com.