



**RockWare Software,  
Consulting & Training.  
For over 34 Years.**



**303.278.3534 · 800.775.6745 (U.S.)**

**+41 91 967 52 53 (Europe)  
[www.RockWare.com](http://www.RockWare.com)**



An easy-to-use log plotting program with a flexible log layout. Plot single-page logs for shallow borings or multi-page/continuous logs for deep wells. LogPlot has been widely used in the environmental, geotechnical, petroleum, and mining industries since 1983.

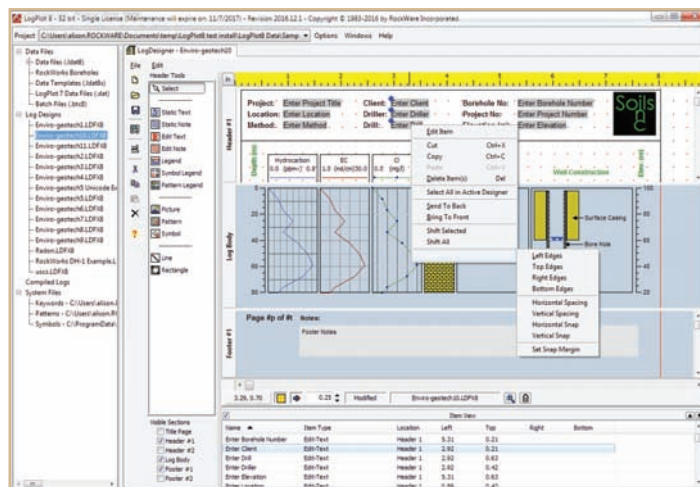
**Download a trial version at [www.rockware.com](http://www.rockware.com)**

**Single \$899**  
**Network \$1,575**

## The Log Designer

The Log Designer allows you to quickly design borehole and well logs and modify existing design templates.

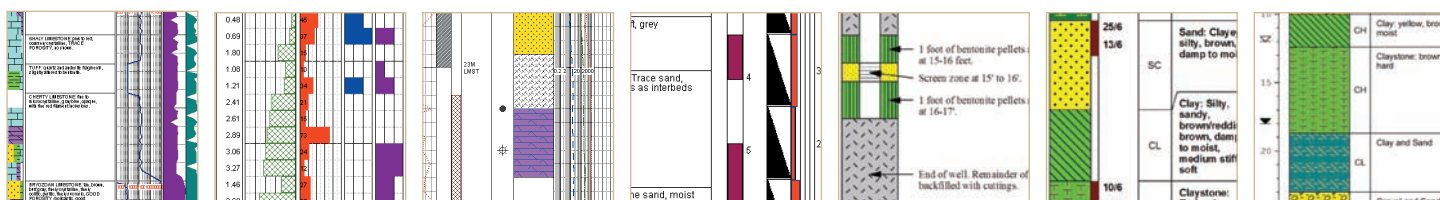
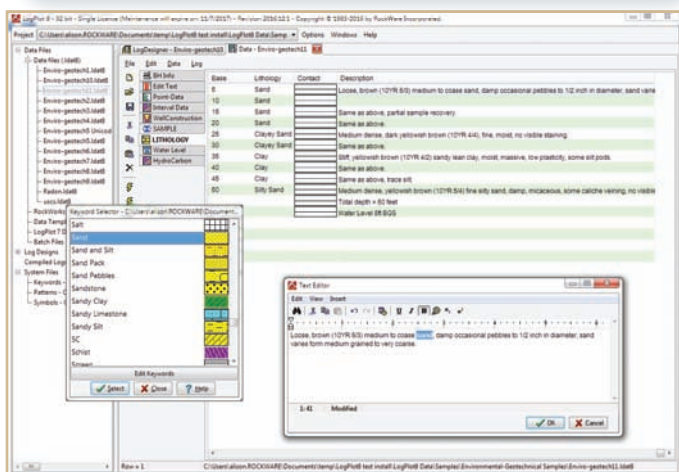
- Easy to use, with point, click, multiple-select and alignment capabilities
- Multi-pane re-vamped design window displays headers, footers, and log body (NEW)
- Two header and footer designs, full page report header
- Well information linking between data file and header/footer fields
- Macros for dates, page numbers and well locations
- Header/footer images, patterns, symbols, curve and bargraph legends, notes and text
- The log body can include any number and combination of columns, including lithology patterns and descriptions, cuttings percent columns, single and cross-plot curves, bargraphs, interval and point-based text, tadpoles, fracture traces (NEW), well construction, raster images, fillbars, water levels and other symbols, and scale bars



## The Data Editor

Type, copy/paste and or import your log data into the Data Editor.

- Tabbed data sheets with a flexible layout, for easy data entry (NEW)
- Data sheets added on the fly, or automatically updated from the log design
- Double-click access to RockWorks borehole records, data can now be extracted from and written directly to the RockWorks I7 database (NEW)
- Data import from LAS, Excel, DBF, AGS (NEW) and text
- Data export to LAS, Excel and RockWorks
- Data types: lithology/stratigraphy, interbeds, cuttings percent-ages, curves, interval and point-based data and text, general comments, header/footer text and notes, symbols, fillbars, downhole survey, tadpoles, fractures and well construction
- Easy linking of keywords ("sandstone") to graphic patterns and colors

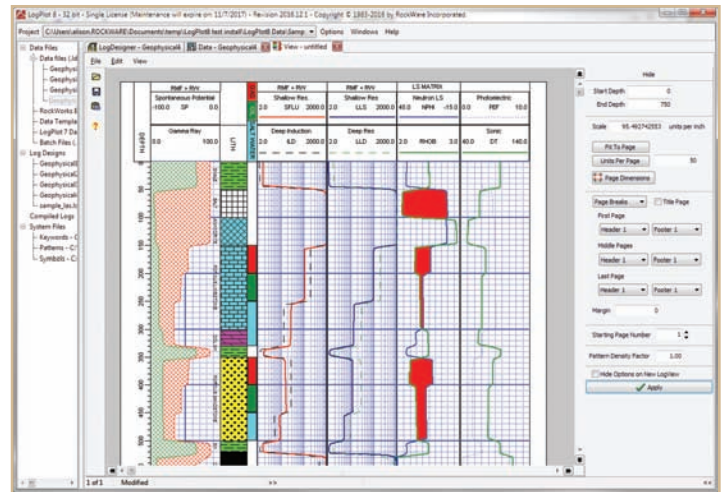






## The Log Viewer

- Create paginated or continuous logs
- Compile and display multiple logs at once
- Quickly re-display logs at any scale and adjust header/footer settings (NEW)
- Use your mouse to view depth/elevation at any point on the log
- Graphic export options include PDF (NEW), HTML (for display online), BMP, JPG, TIFF, and PNG
- Print your log, export an image of a single page, or export all pages in a single image



## Other New Features in LogPlot8

**New Patterns** – The LogPlot Pattern Editor now supports the new pattern library with filled shapes and an unlimited number of items.

**New Streamlined Interface** – The LogPlot Data Editor, Log Designer and LogViewer have been redesigned for use on multiple monitors and to make the creation and modification of logs easier than ever.

## New Log Data Tools

- New text formatting for text descriptions – bold, italic, underline, color, superscript, subscript or symbols
- New way and thick contact lines for display in Lithology pattern columns
- LogPlot now supports Unicode for non-Latin characters
- New tools add increased flexibility when defining data page names and columns
- New Data Templates to store customized data entry forms

## New Log Display Tools

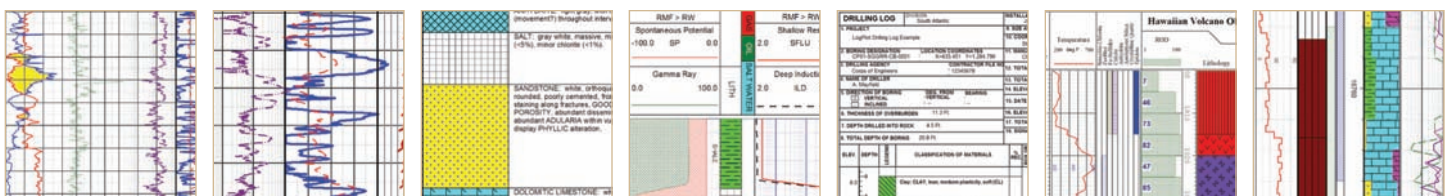
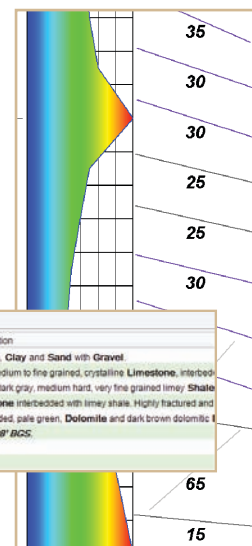
- Header/Footer symbol and pattern legends
- Log body fracture columns and water level symbols
- Offset options for interval text columns
- New color gradient options for log body curves
- New static text macros
- Curve/bargraph headers that can move when the column location is adjusted
- Rotated Header text and notes

## New Network License Manager

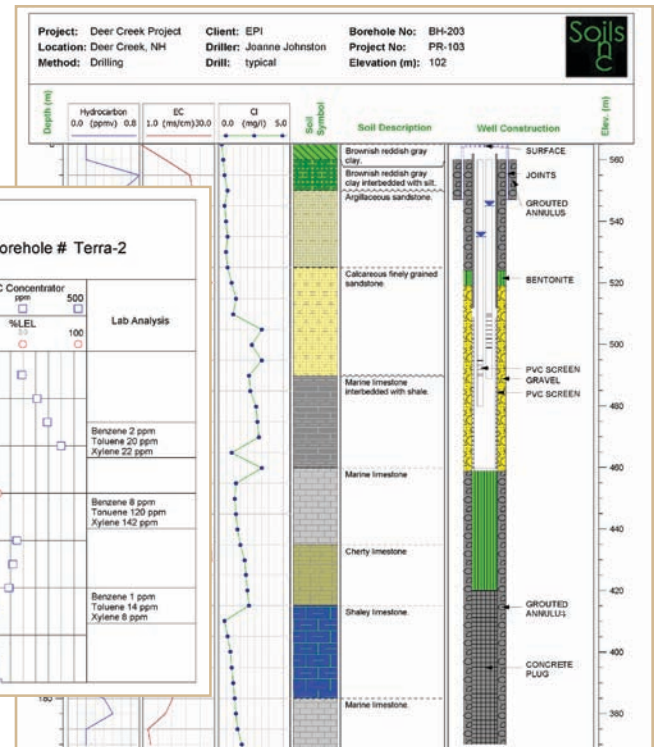
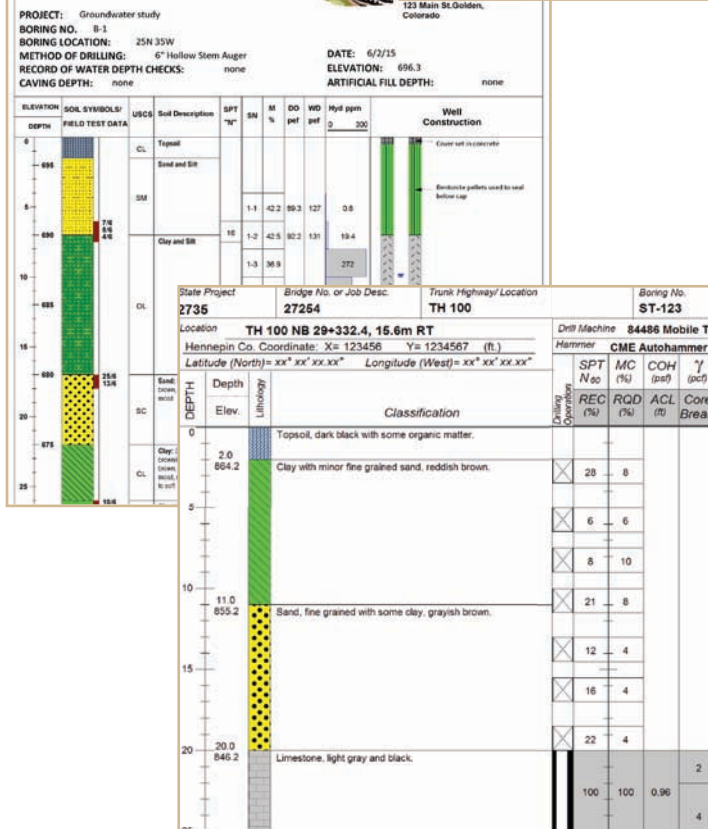
- Easy to set up
- Borrow a license for use in the field

|  |      |  |                    |
|--|------|--|--------------------|
| <b>TriStar 环境</b><br>集成环境解决方案<br>6709 Herndon Ave., Suite 100<br>Herndon, VA 20186   |      | <b>现场钻孔日志</b><br>钻孔编号: <b>RFP-34B</b><br>深度: <b>30脚</b>  |                    |
| <b>项目信息</b><br>项目: <b>Bandolier Gas Station</b><br>网站地址: <b>3300 W. Rimrock Drive</b><br>工作编号: <b>10-001-02</b><br>备注: <b>Zachary Smith</b><br>项目日期: <b>6-02-15 to 6-03-15</b> |      | <b>钻井信息</b><br>钻井公司: <b>MacPhearson Drilling Co.</b><br>钻机: <b>Doug Oakley</b><br>设备类型: <b>CME 45</b><br>井口直径: <b>6" 空心钻头</b><br>完井方法: <b>加转圈正分置器</b><br>井口直径/下井: <b>140 磅, 30</b> |                    |
| <b>地层柱中的地层</b>   |      | <b>地层柱数据</b>   |                    |
| 深度   | 地层柱号 | USCS   | 地层柱名称              |
| 0  | 1    | SW   | Cement: Ash cement |
| 5  | 2    | SW   | Sand: 灰色, 砂        |
| 10   | 3    | GW   | Sand: 浅绿色, 灰绿色     |
| 15   | 4    | CH   | Gravel: 灰绿色, 砂     |
| 20   | 5    | CH   | Clay: 黄色, 砂, 灰     |
| 25   | 6    | CH   | Claystone: 灰色, 砂   |
| 30   | 7    | CH   | Clay and Sand      |

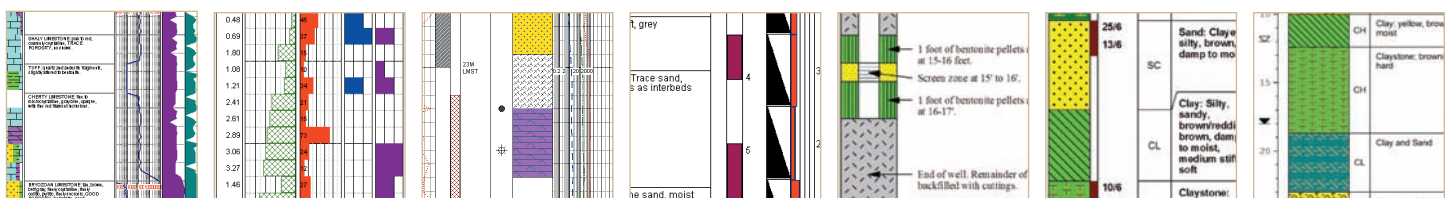
| Lithology | LITHOLOGIC DESCRIPTION   |  |  |  |
|-----------|--|--|--|--|
|           | Alluvium, Clay and Sand with Gravel.   |  |  |  |
|           | Grey, medium to fine grained, crystalline Limestone, interbedded with dark grey shale.           |  |  |  |
|           | Light to dark limey Shale, with some fossiliferous.  |  |  |  |
|           | Limestone interbedded and fractured.   |  |  |  |
|           | Interbedded, pale green, Dolomite and dark brown dolomitic Limestone. Slightly fractured, fresh. |  |  |  |



- Soil and rock type symbols and descriptions
- Sample symbols, names, descriptions and data
- VOC data collected from MIP or other sampling devices
- OVA/PID data
- Borehole geophysics
- Detailed well construction diagrams, including nested wells
- Water level data
- Water and soil contamination information
- Blow counts, RQC and other geotechnical parameters



- Soil and rock type symbols and descriptions
- Blow counts, RQD and other geotechnical parameters
- Core symbols and data, including Recovery and RQD
- Fracture information, including spacing, orientation and aperture
- Sample symbols, names, descriptions and data
- Borehole geophysics
- Atterburg Limits
- Grain Size and sieve analysis results
- Water level data
- Water and soil contamination information
- CPT data, plotted as curves or colored intervals

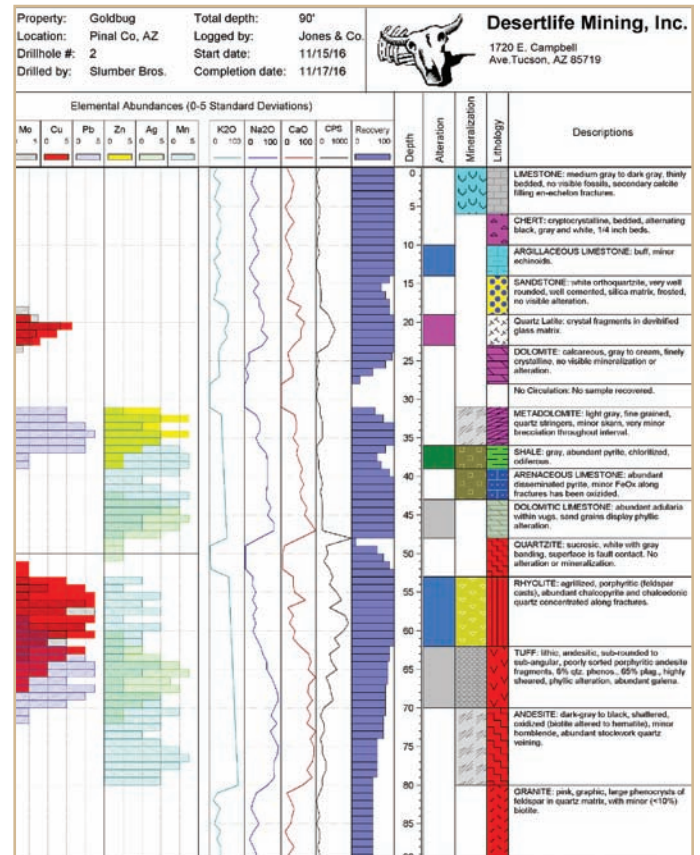
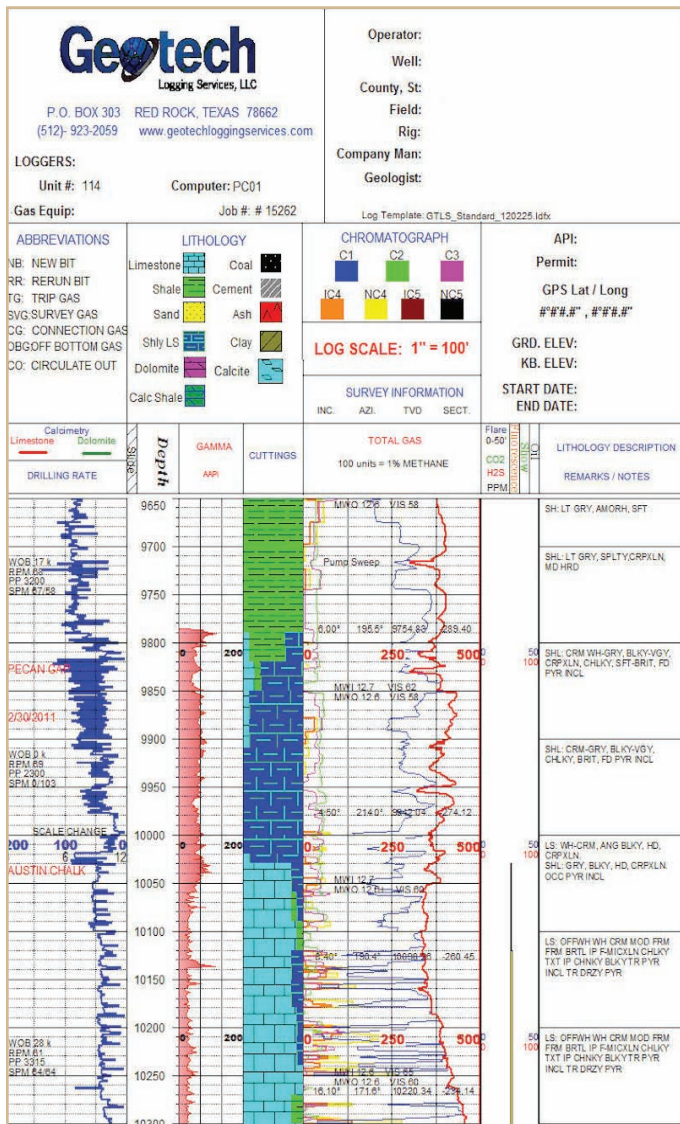






## Mining

- Soil and rock type symbols and descriptions
- Core symbols and data, including Recovery and RQD
- Assay results
- Munsell Color Codes
- Fracture spacing, filling and orientation
- Alteration, mineralization and oxidation values
- Casing and well construction
- Water level data



## Oil & Gas

- Well/borehole geophysics
- Gas curves
- Drilling rate, RPM and Weight on Bit
- Lithologic Cuttings data
- Formation tops and descriptions
- Casing and perforation diagrams
- Drill Stem Test intervals
- Fossils
- Core data, including intervals and fractures
- Pay zones and show intervals

