



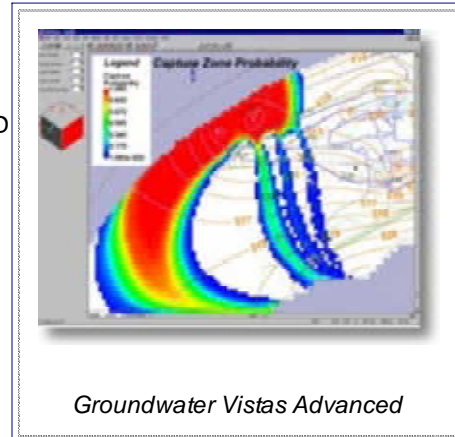
**RockWare**  
Earth Science & GIS Software

www.rockware.com

July 2007 Announcement 1-800-775-6745 or 303-278-3534

### New Versions ▶

- [Groundwater Vistas v. 5](#) - A new version of this popular 3D groundwater flow & contaminant modeling package
- [GS+](#) Version 7 now available for this powerful geostatistics program
- [Terrain Navigator Pro](#) - Field season? Summer trips? Low prices on Terrain Pro's maps & photos - only **\$225**. New features in version 7.5.



Groundwater Vistas Advanced

### Featured Products ▶

- [Profile Analyst](#) - Stunning graphics and integration of geology, geophysics, and geochemistry data
- [RW GIS Link](#) - RockWorks cross sections from ArcGIS
- [RockWorks Utilities](#) - Geo-essentials: Mapping, solid modeling, dozens of geology diagrams, all for only **\$495**.

### Training ▶

- [The Geochemist's Workbench Standard / Professional Workshop](#) - August 16-17, 2007 - Cologne Germany. **Only a few seats left!**
- [RockWorks Workshop](#) - October 25-26, 2007, Denver Colorado USA
- [RockWare Europe](#) - Individual & Small Group Training now available

### Tips ▶

- [Quicksurf DX](#) - Interactively create flowlines anywhere on your surface.
- [RockWorks2006](#) - Compute stratigraphy model volumes from the original grid surfaces. Side-stepping the solid model optimizes accuracy.

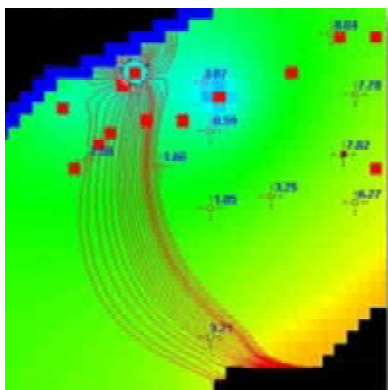
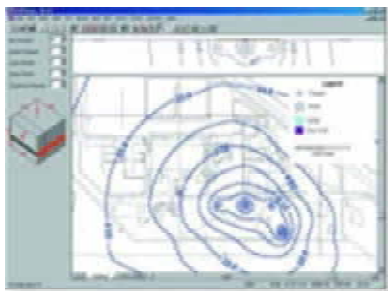
### New Versions \_\_\_\_\_



#### Groundwater Vistas v 5

3D groundwater flow and contaminant transport modeling

RockWare Announcement



**Groundwater Vistas** is a state of the art software package for 3D groundwater flow and contaminant transport modeling, calibration and optimization using the MODFLOW suite of codes.

New in Version 5:

> **New Model Versions.** GV5 will support Pest Version 11, MT3DMS Version 5, MODFLOWSURFACT Version 3, MODFLOW2000 V1.17, and the newest version of MODFLOW from the USGS called MODFLOW2005.

> **Import New MODFLOW2000 Files:** Groundwater Vistas can now import existing MODFLOW2000 datasets for the SFR1, SFR2, HUF, ETS, DRT, and LAK3 Packages.

> **Unsaturated Zone Flow (UZF) Package.**

MODFLOW2005 has a new runoff/recharge/et package that includes the effects of flow through the unsaturated zone. GV5 fully supports the UZF Package.

> **Analytic Element Models:** GV5 now supports SPLIT and will support GFLOW in the future.

> **GWM Optimization Model.** GV5 continues to support SOMOS, MGO2003, Brute Force, and MODOFC. GWM is a new optimization model based on MODFLOW2000.

[Groundwater Vistas Information](#)  
[Download Demo](#)

**Single License Std Vers \$1250**



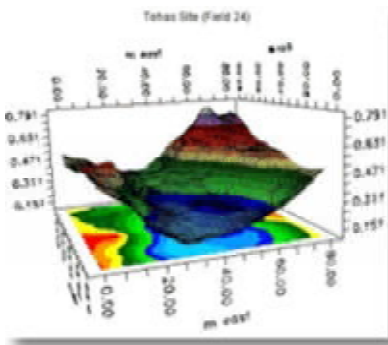
**Single License Adv Vers \$1945**



**GS+ v 7**

*Geostatistics software for the environmental and geosciences*

**GS+** is a comprehensive geostatistics software program that is fast, efficient, and easy to use. GS+ provides all geostatistics components, from semivariance analysis through kriging and mapping, in a single integrated software program. You'll be surprised that geostatistical analysis can be so easy and intuitive.



Version 7 Features:

> **Conditional simulation** (new method) reports z-estimates, standard deviations of estimates, and the likelihood of exceeding some target z-value

> 7 new **autocorrelation** measures: drift, rodograms, correlograms, covariograms, standardized variograms, and pairwise relative and general relative variograms

> Easier **variogram modeling** that includes slider controls to visualize parameter changes immediately

> **h-Scattergram** analysis

> **Improved** variogram mapping - faster and more precise

> Easy data masking from h-Scattergram and Variance Cloud windows: quickly remove outlier data points from analysis




> Improved **graph customizations**

> Please note: Version 7 runs only on Windows XP, Windows 2000, and Windows NT4


[GS+ Information](#)  
[Download GS+ Demo](#)

**Single License \$649**

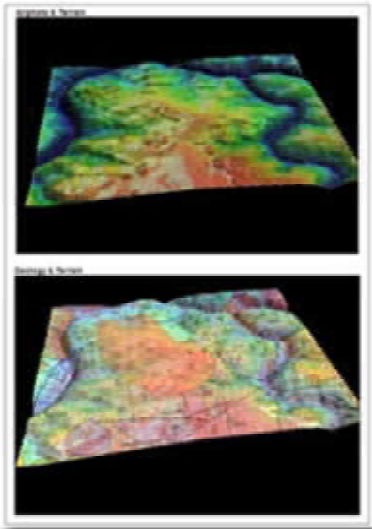


	
<i>Topo map software: USGS topo maps and aerial photos for all US states (except Hawaii)</i>	
 <p><i>Use and share the highest quality USGS maps and aerial photos, from project planning to presentations and reports to GIS and CAD applications. Terrain Navigator Pro works right out of the box with no complicated training.</i></p>	<p>Maps, maps, maps: USGS topo maps are the recognized standard for off-road navigation. The topo maps in <b>Terrain Navigator Pro</b> represent scans of official paper USGS maps, offering clear and detailed images. Each continental US CD-ROM contains up to 300 quads in two scales: 1:24/25,000 (7.5 minute series) and 1:100,000 scale. Alaska CDs contain 1:63,360 and 1:250,000 scale topo maps only.</p> <p>Maps and more: All of the <b>Terrain Navigator Pro</b> mapping tools work with photos as well as maps. 1-meter resolution aerial orthophotography is available for downloading from the developer's internet site. Terrain Navigator Pro includes a 1-year subscription to download aerial photos via your normal internet connection. Any aerial photos you download are yours to keep after the subscription expires. Subscriptions can be renewed year to year.</p> <p>New in Version 7: &gt; Vista compatible &gt; New GeoTip options: Average leg speed, Total average track speed &gt; New Track import options: Rename &amp; separate segments &gt; New bearing control &gt; Bookmarks now global</p>
<a href="#">Terrain Navigator Pro Information</a> <a href="#">Download Demo</a>	<b>Each state \$225</b> 

**Featured Products**

	
<i>Integrate, analyze and visualize geophysics, geochemistry and geology data from various sources</i>	

RockWare Announcement



Encom **Profile Analyst** integrates the fields of geophysics, geology and geochemistry into a single cohesive view. Profile Analyst provides an integration environment for Encom Discover for MapInfo Professional, Encom ModelVision Pro, Encom QuickMag Pro and EM Flow. In addition you can integrate UBC-GIF inversion models, ER Mapper algorithms, grids and images, Intrepid and Oasis montaj® databases.

In addition to the base version (Explorer), a Professional version allows you to extend the functionality of the core software in a single visualization environment. Now you have a decision-making tool that provides an effective communication environment for geophysicists, geologists and geochemists.

[Profile Analyst Information](#)

**Single License Std Version \$1250**

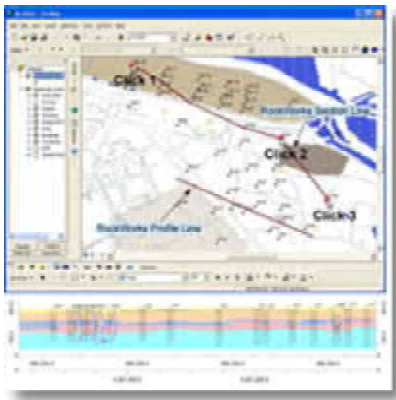


**Single License Adv Version \$1945**



**RockWorks GIS Link**

*RockWorks cross section generation from ArcGIS*



Use the **RockWorks GIS Link** to generate RockWorks Cross-sections, Profiles and Fence Diagrams using ArcMap and RockWorks2006.

- > Create Well Location files in ArcMap as Shapefiles, Feature Classes in a Personal Geodatabases and Layers based on your RockWorks2006 Borehole Manager Project.
- > Create Profiles and Sections using the RockWorks2006 engine and any of the following data types: StripLogs, Lithology, Stratigraphy, Interval(I)-Data and Point(P)-Data.
- > Point Snapping Tool allows you to snap to the closest borehole or well location when choosing your section lines
- > Create 3D Fence Diagrams using the RockWorks2006 engine and any of the following datasets: StripLog, Lithology, Stratigraphy, I-Data and P-Data
- > Stratigraphy Sections and Fence Diagrams can be Interpolated or based on Hole-to-Hole Straight Lines sections

[RockWorks GIS Link Information](#)

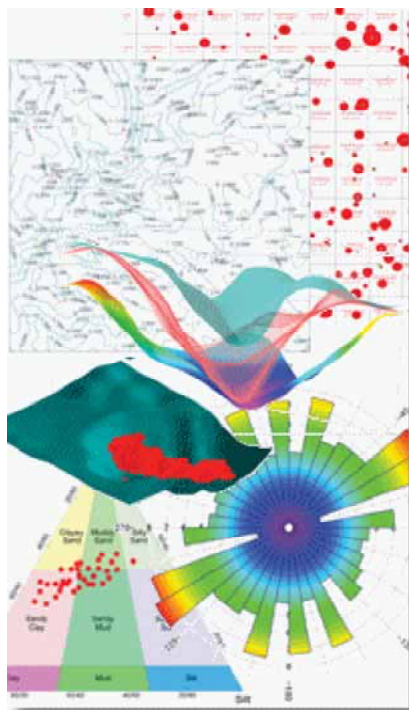
**Single License \$195**



**RockWorks Utilities**

*An indispensable collection of mapping, modeling, analysis and display tools*

## RockWare Announcement



The **RockWorks Utilities** (which are included in the full RockWorks2006 package) provide geologists and engineers an amazing array of essential geotools, all for only \$495!

- > **Contour maps** - Line and color contour maps, custom color tables for 3D surfaces, plot with point/symbol maps and map layers such as DXF, Shapefiles and photos
- > **3D surfaces and terrain models** - Custom color tables for 3D surfaces, display multiple 3D surfaces in one window, drape images, DXF and shapefiles over 3D surfaces
- > **Gridding tools** - 12 interpolation methods, grid math / resampling / filter tools, grid editor, import/export, grid morphing, manual stratigraphic models from grid files
- > **Solid modeling** - 8 interpolation methods, view solids as isosurfaces or "all voxels", display as 3D fences & 2D sections, statistics and volume calculations, morph solids
- > **Volumetrics** - Easy reports for X, Y, thickness data, grid-based reports with detailed filtering (stripping ratio, etc.), pit optimization with 3D solid models
- > **Piper diagrams, Stiff plots**, and other hydrochemistry tools
- > **Stereonet, rose diagrams**, and other structural geology tools
- > and much more..

[RockWorks Utilities Information](#)  
[Download Demo](#)

**RockWorks Utilities Single License: \$495** [Buy Now](#)

## Training

### The Geochemist's Workbench Standard / Professional Workshop

**August 16-17, 2007 - Cologne, Germany**  
(concurrent with the **2007 Goldschmidt annual meeting**)

*only a few seats left!*



The two-day course will begin with a comprehensive walk through reaction path modeling, and end with an introduction to reactive transport models

The August 2007 **Geochemist's Workbench workshop** is designed for:

- > Current GWB Standard and GWB Professional users wishing to become more familiar with the software's interface and features.
- > Those interested in learning detailed reaction path modeling (using redox disequilibrium, kinetics and surface complexation)
- > Those interested in learning the basics of 1D/2D reactive transport modeling.
- > Current users of GWB Essentials who are considering upgrading to GWB Standard or Pro.

This course is designed for those already familiar with basic principles of aqueous geochemistry theory, thermodynamics, and geochemical modeling.

[GWB Workshop Information](#)

**1002-01 Single Seat \$899**

[Buy Now](#)

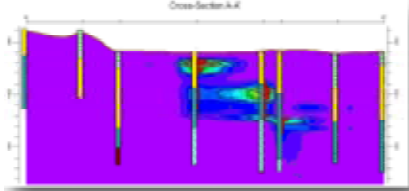
**1002-02 Single Seat, AC rate \$699**

[Buy Now](#)

RockWare Announcement

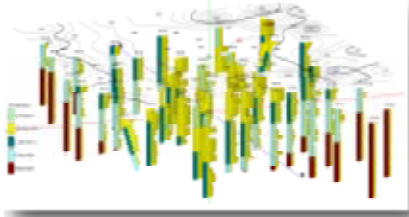
**RockWorks2006 Workshop**

**October 25-26, 2007 - Denver, Colorado USA**



Join RockWare in Denver on Thursday & Friday October 25-26, 2007, for a two-day short course covering RockWorks2006.

Specific topics include the management of geophysical, geochemical, lithologic, stratigraphic, hydrologic, and structural data from vertical, inclined, and deviated boreholes and measured sections. Output and analytical topics will include surface models, striplogs, cross sections, fence diagrams, and solid modeling. Special emphasis will be placed on three-dimensional graphics and computing the volume and mass properties of geological features such as contaminant plumes, ore bodies, aquifers, and hydrocarbon reservoirs.



If you are a beginner, intermediate or advanced user this course will have something for you. All industries are welcome.

[RockWorks2006 Workshop Info](#)

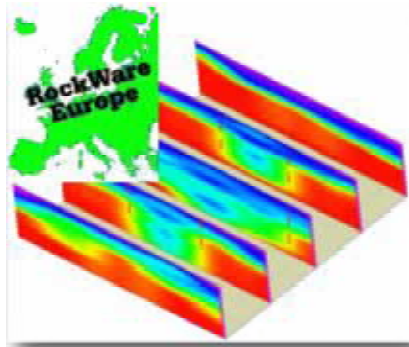
**1005-01 Training, Single Seat \$799**



**Academic pricing available - contact us**

**RockWare Europe Small Group Training**

*RockWorks2006*



RockWorks training for individuals and small groups is now available in RockWare's European office near Lugano Switzerland.

This training is geared toward the beginning and intermediate user - learn the basics of the program (data entry, database concepts, log plotting, surface modeling, solid modeling, mapping), and how to go to the next level. Training is typically provided in English, but the staff is fluent in French, Italian, and German as well.

Prices vary. For details contact: [europa@rockware.com](mailto:europa@rockware.com) or call +41 91 967 52 53.

**Tips**



**QuickSurf DX Flowlines**

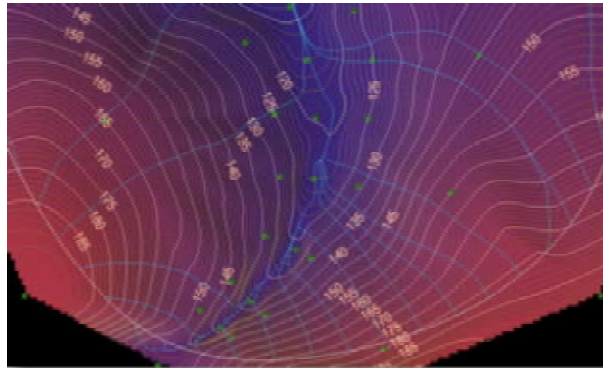
*Interactively create flowlines anywhere on your surface with **QuickSurf DX***

Use the brand new Surfaces/Water Drop Flowline to visualize the path of a water drop from the location of the cursor, or use the Surfaces/3D Flowlines to create sets of flowlines for a given surface from a selected curve or curve set. Just draw a curve on your surface,

## RockWare Announcement



run 3D Flowlines, select the curve and the surface of interest and your sampling method and the water path flowlines will be created.



[QuickSurf DX Information](#)  
[Download QuickSurf DX Demo](#)

**Standard License \$699**

[Buy Now](#)

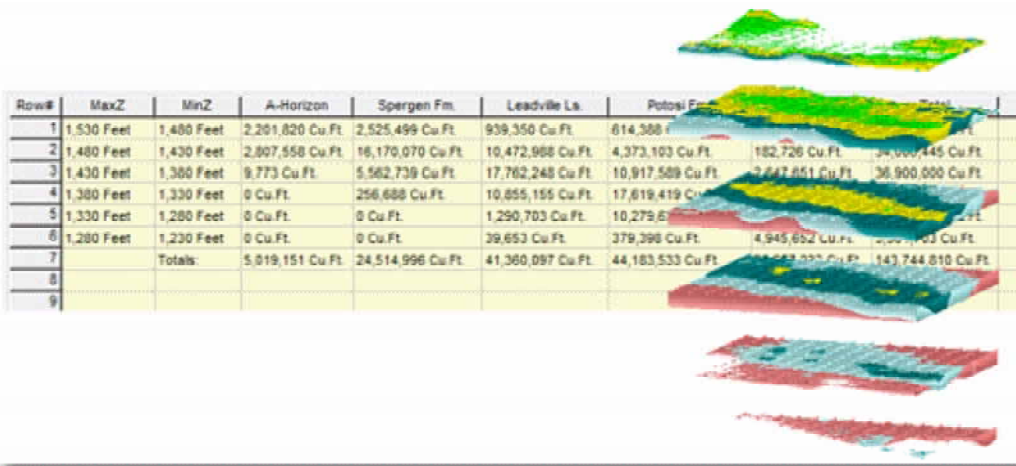
### **RockWorks2006**

#### *Stratigraphy Volumes - new grid-based tool*

Use the newest **RockWorks2006** Stratigraphy Volume tool to compute material volumes using the original stratigraphy model grid surfaces rather than a solid model equivalent. Simply define the sampling interval, and the program will report volume (and/or mass) in a row and column listing. The benefit: This eliminates the need to fiddle with the z-spacing (voxel height) of the solid model to obtain optimum accuracy.

Update your licensed version of RockWorks2006 for no charge, from:  
[www.rockware.com/download.html](http://www.rockware.com/download.html).

RockWare Announcement



[RockWorks2006 Information](#)  
[Download RockWorks2006 Demo](#)

**RockWorks2006 Single License \$1999**

**Buy Now**



RockWare Inc., founded in 1983, is a leading developer and reseller of earth science software solutions, with over 200 affordable GIS, environmental, geotechnical, mining and petroleum packages. Visit the RockWare website at <http://www.rockware.com>.  
 Prices are subject to change without notice.  
 RockWare is an Authorized ESRI® Reseller

© 2007 - RockWare, Inc. - 2221 East St, Suite 101, Golden, CO 80401 USA - All Rights Reserved.  
 All products and names mentioned are the property of their respective owners.