



January 2012 Announcement

800 775 6745

FEATURED PRODUCTS

MARS® Explorer v7

Manage, Process, and Visualize LiDAR Data

MARS Explorer has an unlimited data loading capacity for airborne, terrestrial, and mobile LiDAR data sets. Use on-the-fly data decimation or view the entire data set.

MARS Explorer Features
 + 64-bit support for all Windows operating systems
 + Load LiDAR (LAS), imagery (RGB & hyperspectral) and GIS vectors
 + Supports WMS imagery, including Bing Maps
 + Batch generate DEMs and elevation contours
 + Allows multi-core processing for more efficient use of PC hardware
 + Free 30-day evaluation download available



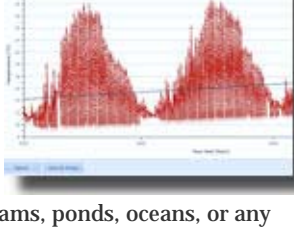
[Read more](#)
[MARS Explorer pricing](#)
[Download demo](#)

[BACK TO TOP](#)

Surface Water Manager

A complete data management solution for water quality and surface water data

Surface Water Manager is built on a database that can map, graph, trend, compare, analyze, and report data. **Surface Water Manager** is a full function database that can be used by anyone, even those with no database experience.



Quick features list:

- + Organize all of your lab reports and field data into one database.
- + Maintain data for rivers, lakes, streams, ponds, oceans, or any surface water.
- + Use quality control techniques to prevent data entry errors.
- + Easily import non-detect values into the database.
- + Save sampling stations in database to generate Google Earth maps.
- + Monitor elevation, flow, ion, nutrient, pollutant, biological, zooplankton, and phytoplankton data or create new parameters.
- + Instantly graph data using 11 different types of graphs.
- + Much more

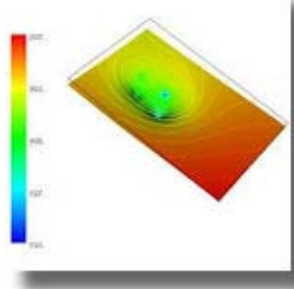
[Read more](#)
[Surface Water Manager pricing](#)
[Download demo](#)

[BACK TO TOP](#)

AquiferWin32

The ultimate in pumping test analysis & simulation

AquiferWin32 is the most sophisticated program for the analysis and presentation of aquifer tests including pump tests, slug tests, step tests and analytic element flow and contaminant transport models. The WinFlow and WinTran Solvers are now contained within **AquiferWin32**.



Input:

- + Enter or import data into a spreadsheet, characterize pumping and monitoring well, select solution type and match data. Or, enter raw aquifer test data with programmatic data conversions
- + Define a site plan including a site map, well locations and well construction information
- + Define an aquifer test including pumping schedule, wells monitored and raw drawdown versus time data
- + Define an analysis by grouping wells, transforming and clipping well response data, optionally adjust for radial distance on a well by well basis

Output:

- + Primary support for traditional manual curve matching techniques

- + User selectable and unlimited type curves on curve match graph
- + Multiple parameters available as type curves for many analyses
- + Graphically visualize the impact of specific parameters with custom type curve suites
- + Much more

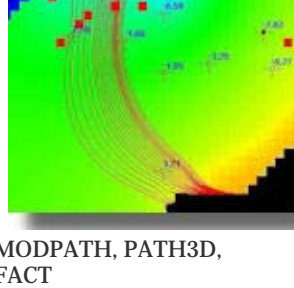
[Read more](#)
[AquiferWin32 pricing](#)
[Download demo](#)

[BACK TO TOP](#)

Groundwater Vistas

Graphical user interface for groundwater flow & contaminant transport modeling

Groundwater Vistas is a state of the art software package for 3D groundwater flow and contaminant transport modeling, calibration and optimization using the MODFLOW suite of codes. The advanced version of **Groundwater Vistas** provides the ideal groundwater risk assessment tool.



Features:

- + Supports MODFLOW2000 and 2005, MODFLOW-NWT, MT3D99, MODPATH, PATH3D, MODFLOW-T, and MODFLOW-SURFACT
- + Displays both plan & cross-sectional views
- + Run all supported models from within GV
- + Supports PEST & UCODE model-independent calibration software

- + Automated parameter sensitivity analysis
- + Imports-exports data from ArcView
- + Imports existing MODFLOW, ModelCad & Flowpath files, and data from SURFER & ASCII files
- + Export results to SURFER, slicer, DXF, BMP, WMF, EarthVision, EVS, Tecplot, & ASCII files
- + Much more

Groundwater Vistas comes in 4 versions: Standard, Advanced, Professional, and Premium.

[Read more](#)
[Groundwater Vistas pricing](#)
[Download Demo](#)

[BACK TO TOP](#)

VIDEOS

RockWare Videos

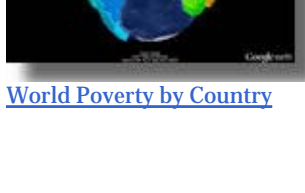
Check out the New Videos on the [RockWare YouTube Channel](#)



[Ring of Fire Seismicity - 2011](#)



[Displaying Geologic Cross Sections and Geophysical Profiles within Google Earth](#)



[World Poverty by Country](#)

[BACK TO TOP](#)

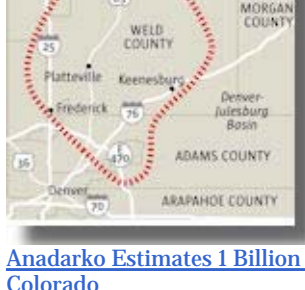
BLOG

RockWare Blog

New Postings on the [RockWare Blog](#)



[What the Frac? - A Look Inside a Frack Job](#)



[Anadarko Estimates 1 Billion Barrels of Oil in Wattenberg Field, Colorado](#)



[Earthquakes of 5+ Magnitude Worldwide, Dec 2011](#)

[BACK TO TOP](#)

TIPS

RockWorks15: Importing Data from Other Databases

Use the **RockWorks ADO Import** tool to import data from a variety of other databases into the Borehole Manager. It's easy to use:

- + Select the type of data you're importing (Access, etc.).
- + Open or connect to the database.
- + Select the import table that matches each of the RockWorks tables (Location, Orientation, etc.).
- + Click and drag the import fields that match the Borehole Manager fields. You can create new fields in RockWorks on the fly.
- + Import each table individually - so you can append new data to an existing database.
- + Best of all, save all the settings to a template to use again.



[Read more about RockWorks](#)
[Download demo](#)

[BACK TO TOP](#)

IN THIS ISSUE

MARS® Explorer v7:
 Powerful LiDAR Software

Surface Water Manager: Data Management & Plotting

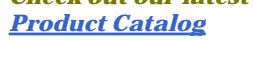
AquiferWin32: Pump Test Software

Groundwater Vistas: Groundwater Modeling

New Videos: RockWare's YouTube Channel

RockWare Blog: See Recent Postings

RockWorks Tips: Import from other Databases



Check out our latest PDF Product Catalog

No time? Short on staff? Don't want to learn new software? Let RockWare Consulting help!



TRAINING/WORKSHOPS

RockWorks Workshop: Feb 7-8, 2012 in Golden, Colorado, USA

Sold out. [learn more](#)

RockWorks Workshop: Feb 27-28, 2012 in Lugano, Switzerland

[learn more](#)

RockWorks Workshop: Mar 21-22, 2012 in Golden, Colorado, USA

[learn more](#)

RockWare Europe Small Group Training: Lugano, Switzerland

[email to learn more](#)

RockWare Web-Based Training: Need just a couple of hours of RockWare expertise?

[email to learn more](#)

Follow RockWare on...



RockWare Inc., within 1983, is a leading developer and reseller of earth science software solutions, with over 100 GIS, environmental, geotechnical, mining, and petroleum packages. RockWare also offers software training and project consulting services. Visit the RockWare website at <http://www.rockware.com/>. Prices are subject to change without notice. RockWare is an Authorized ESRI (R) reseller MapInfo is a registered trademark provided under license from Pitney Bowes Software Inc (C)2011 - RockWare, Inc. - 2221 East St, Suite 101, Golden, CO 80401 USA - All Rights Reserved. All products and names mentioned are the property of their respective owners.