

You are receiving this newsletter because you **SIGNED UP AT RockWare.com**.  
Having trouble reading this email? [View it in your browser.](#)



August 2010 Announcement

800 775 6745

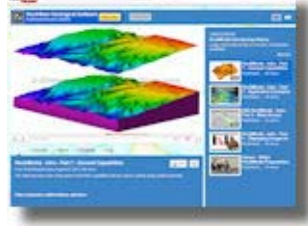
ANNOUNCEMENTS

## RockWare's YouTube Channel

**Check out our new RockWorks15 Videos**

Visit our new YouTube channel where there's a plethora of videos for RockWorks15:

- \* [Introductory Videos](#)
- \* [Application Examples](#)
- \* [RockWorks Concepts](#)
- \* [RockWorks How-To Videos](#)



Become a subscriber to our channel and you'll receive notice of new videos and updates.

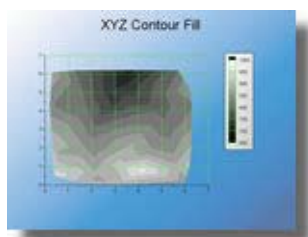
[YouTube: RockWare Software](#)

NEW VERSIONS

## DeltaGraph 6

**Now Available for both Windows and Mac**

**DeltaGraph 6** offers scientific and business charts, analysis tools, complete chart customization capabilities and flexible import and export file types.



Researchers /analysts / managers who work with complex sets of data can use **DeltaGraph 6** to collect, analyze and present their findings in a visually compelling and memorable manner: more than 80 2D and 3D graphs and charts, with hundreds of styles.

**DeltaGraph 6** includes a chart advisor and style libraries that enable users to quickly edit and arrange legends, grids and pictures anywhere on a chart to achieve a higher level of visual interest and readability.

- \* Interface enhancements that complement the latest Mac and Windows operating systems.
- \* International text support
- \* Fully cross-platform document files
- \* Support for Pantone and other 3rd-party spot colors in PDF and EPS exports

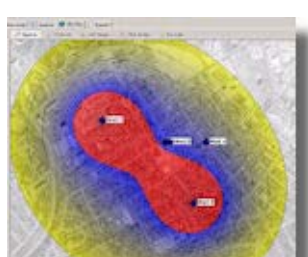
[Read More](#)  
[DeltaGraph Pricing](#)

[BACK TO TOP](#)

## AquiferTest Pro 2010.1

**Graphical Analysis & Reporting of Pumping & Slug Test Data**

**AquiferTest Pro** now incorporates several high-demand analysis methods along with increased functionality:



**Pumping and Slug Test Solutions**

- \* **Horizontal Wells:** Expand your pumping test applications by analyzing data captured from horizontal pumping wells.
- \* **Well Skin Effects and Well Bore Storage:** Improve the accuracy of your analysis by accounting for well skin effects and well bore storage in pumping wells
- \* **Expand your slug tests:** Analyze slug tests in high conductivity formations that exhibit inertial effects and oscillatory response
- \* **Improved Neuman analysis** is more than 90 times faster than the previous implementation

**Performance Enhancements**

- \* **Improve Quality:** Generate a statistical scatter plot showing the quality of the curve fit
- \* **More Flexibility and Greater Control:** Manual curve fitting offers flexibility & improved accuracy
- \* **Increase Convenience:** With a single mouse click display the complete family of type curves for Neuman and Hantush analysis for easier type-curve matching
- \* **Increased Confidence:** New derivative smoothing methods allow for easier identification of the aquifer type, well effects, and boundary conditions
- \* **Display calculated leakage factor** for Hantush analysis in the report

And much more!

[Read More](#)  
[AquiferTest Pro Pricing](#)

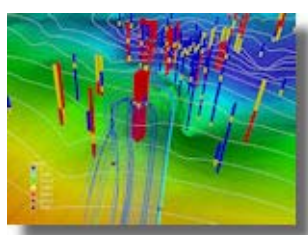
[BACK TO TOP](#)

FEATURED PRODUCTS

## Visual MODFLOW Premium

**3D groundwater flow & contaminant transport modeling**

**Visual MODFLOW Premium's** expanded groundwater simulation capabilities tackle the most challenging groundwater projects with ease.



With **Visual MODFLOW Premium**, you have all the tools necessary to:

- \* Graphically assign model grids, properties and boundaries
- \* Visually model input parameters (2D or 3D views)
- \* Run the flow, pathline, and transport simulations
- \* Automatically (WinPEST) or manually calibrate the model
- \* Display and interpret the modeling results in full 3D
- \* Produce professional reports

Some of the models include:

- MODFLOW-2000** - world standard for groundwater flow simulations
- MODFLOW-2005** - three-dimensional finite-difference groundwater-model, 2005 version
- MODPATH** - standard package for forward and reverse particle tracking
- Zone Budget** - sub-regional water budget calculations
- MT3DMS** - multi-species contaminant transport simulations
- MT3D99** - an enhanced version of MT3DMS
- MNW** (Multi-Node Well) - help simulate wells with well screens that span multiple layers
- RT3D** - reactive transport simulations
- PHT3D** - multi-component transport model for 3D reactive transport in saturated porous media
- SEAWAT-v4** - 3D variable-density groundwater flow coupled with multi-species solute and heat transport
- WinPEST** - automated calibration and sensitivity analysis **and more**

[Read More](#)  
[Visual MODFLOW Premium Pricing](#)

See also  
[Visual MODFLOW Standard](#)  
[Visual MODFLOW Professional](#)

[BACK TO TOP](#)

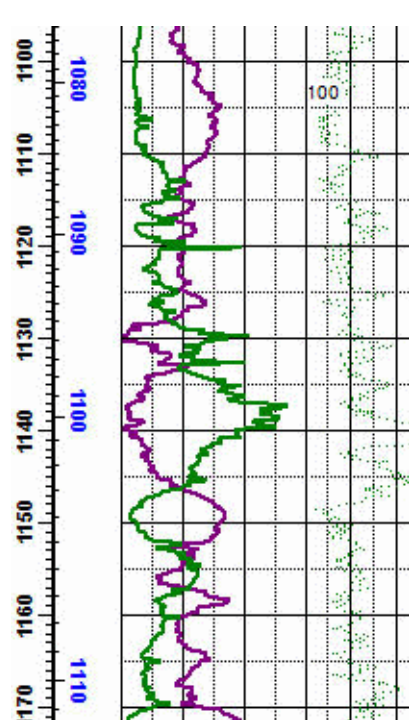
TIPS

## LogPlot7: TVD Scales

Use LogPlot's TVD tools to compute and display True Vertical Depths in your log.

First, enter your downhole survey data into the Orientation data tab, as one or more entries of depth, azimuth, and inclination measurements. Then, add a scalebar to the log display (or modify an existing scalebar), setting it up to display "survey-based" depths. When you compile, LogPlot will determine True Vertical Depth continuously down the log.

In this example, the black scale represents Measured Depth and the blue represents True Vertical Depth for this deviated well.



[Read more](#)  
[Download demo](#)

[BACK TO TOP](#)

IN THIS ISSUE

**RockWare's YouTube Channel:** New RockWorks15 videos

**DeltaGraph 6:** New version of this popular graphing software

**AquiferTest Pro 2010.1:** New version of this pumping test software

**Visual MODFLOW Premium:** 3D groundwater flow & contaminant transport modeling

**LogPlot7 Tips:** TVD Scales

**No time? Short on staff? Don't want to learn new software? Let RockWare Consulting help!**

TRAINING/WORKSHOPS

**RockWorks Workshop: *sold out***  
August 25-26, 2010 in Golden, Colorado, USA  
[learn more](#)

**RockWorks Workshop:** Oct 14-15, 2010 in Golden, Colorado, USA  
[learn more](#)

**GWB Workshop:** Nov 18-19, 2010, Golden, Colorado, USA  
[learn more](#)

**RockWare Europe Small Group Training:** Lugano, Switzerland, Europe  
[email to learn more](#)

**RockWare Web-Based Training:** Need just a couple of hours of RockWare expertise?  
[email to learn more](#)



RockWare Inc., founded in 1983, is a leading developer and reseller of earth science software solutions, with over 150 affordable GIS, environmental, geotechnical, mining, and petroleum packages. Visit the RockWare website at <http://www.rockware.com/>. Prices are subject to change without notice.  
RockWare is an Authorized ESRI (R) reseller  
MapInfo is a registered trademark provided under license from Pitney Bowes Software Inc (C)2010 - RockWare, Inc. - 2221 East St, Suite 101, Golden, CO 80401 USA - All Rights Reserved. All products and names mentioned are the property of their respective owners.