



**RockWare**  
Earth Science & GIS Software

www.rockware.com

June 2010 Announcement

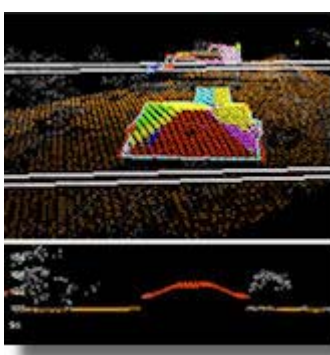
800 775 6745

#### FEATURED PRODUCTS

## LP360

### Process Large LIDAR Datasets in ArcGIS

LP360 is a first-of-its-kind LIDAR extension for the ESRI environment. The LP360 LIDAR extension uses a specially-designed ArcMap data layer to draw points directly from LAS files thereby integrating LIDAR data with the rest of your GIS. LIDAR data can be viewed together with data in any format supported by ArcGIS, including vector data, rasters, and imagery.



- \* Virtually limitless LIDAR data architecture
- \* Integrated extension for ArcMap/ArcCatalog
- \* Requires only a standard ArcView license
- \* LP360 Standalone is also available.
- \* Creates a LIDAR data layer in ArcMap

Also available:

- > [LP360 Classify Module](#)
- > [LP360 Extractor Module](#)

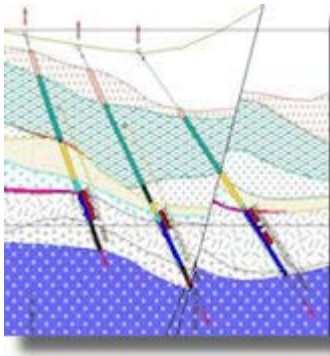
**LP360** - [Read more](#) - [Pricing](#) - [Download demo](#)  
**ArcGIS** - [Read more](#) - [Get a Quote](#)

[BACK TO TOP](#)

## Downhole Explorer

### Drillhole data management and display

Downhole Explorer is an exceptionally smart drillhole presentation and plotting program with many innovative features. Downhole Explorer's on-line tutorials and wizards make the program extremely easy to use - the document wizard makes it possible for the first time user to build an entire project complete with section plots and log sheets in a matter of minutes.



- \* Changes and additions made to the source data files or tables are automatically reflected in all plots

- \* Geophysical, hydrogeological, mineralogical and geomechanical data can be imported, combined and displayed with the same ease as standard geochemical and lithological logs.

- \* Data can be presented in many different forms including table, section, plan, 3D and log views. Every aspect of the views is fully customizable.

[Download demo](#)

[Read more](#)

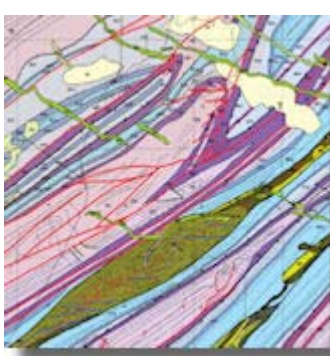
[Downhole Explorer pricing](#)

[BACK TO TOP](#)

## Encom Discover

### Compile, visualize, analyze and map spatial geoscience data

Since its release in 1994, Discover with MapInfo Professional has become the GIS of choice for geologists, environmental scientists, cartographers, exploration managers and database administrators.



Discover provides an extensive range of statistical, geostatistical, graphical, modeling, and visualization tools that will help you to recognize trends and anomalies in multi-variate data acquired from multiple sources. Discover will also assist you with identifying and eliminating false anomalies that can arise from sampling and assaying errors or geological bias.

**Encom Discover** - [Read more](#) - [Get a Quote](#)

**MapInfo Pro** - [Read more](#) - [Get a Quote](#)

[BACK TO TOP](#)

#### SALE

## SWS Software Sale

May 17 - June 30, 2010

Huge discounts on **commercial & government licenses** of the following software titles:

- \* AquaChem
- \* Aquifer Test (Std, Pro)
- \* GW Contour
- \* Hydro GeoAnalyst
- \* Hydro GeoBuilder
- \* Visual MODFLOW
- \* Visual MODFLOW Pro
- \* Visual MODFLOW Premium
- \* Visual MODFLOW + SEAWAT

[BACK TO TOP](#)

#### TIPS

## RockWorks15: Using Scripts

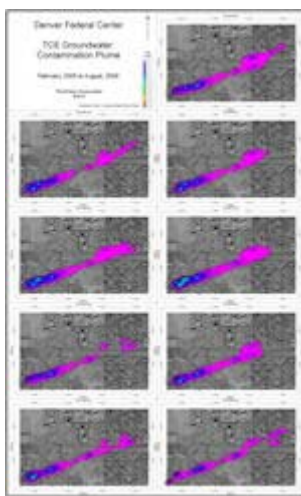
(or how NOT to stay up all night)

**Location:** Your office  
**Time:** 10:00 pm, the night before your presentation  
**Scene:** Your co-worker walks in with data for 25 new boreholes in your project.  
**Problem:** Creating models for 5 geochemical components for 12 sampling dates, and 15 different diagram types for each component for each date.  
**Solution:** You surprise your co-worker by smiling and saying, "No problem!" You import the new data and re-run your RCL scripts. Piece of cake.

Use RockWorks "RCL" (RockWare Command Language) scripts to:

- \* Automate repetitive tasks (save time)
- \* Track your work (log the processes)
- \* Recreate your work (reproduceability)

RCL scripts allow you to bypass the menus to run program options. Once you have a list of settings for a particular menu, easily generated from the menu itself, simply define what's different in the next batches (date, component, etc.) and you're on your way.



[Read more](#)

[Download demo](#)

[BACK TO TOP](#)

#### IN THIS ISSUE

**LP360:** LIDAR Extension for ArcGIS

**Downhole Explorer:** Drill hole presentation & plotting

**Encom Discover:** Desktop GIS for geoscience data

**SWS Software Sale:** Save on commercial & gov't licenses until June 30, 2010: Visual MODFLOW, AquaChem, and more.

**RockWorks15 Tips:** Using scripts to save time and log your work

**No time? Short on staff? Don't want to learn new software? Let RockWare Consulting help!**

#### TRAINING/WORKSHOPS

**RockWorks Workshop: Seats Still Available**  
June 23-24, 2010 in Golden, Colorado, USA  
[learn more](#)

**RockWorks Workshop:** Oct 14-15, 2010 in Golden, Colorado, USA  
[learn more](#)

**GWB Workshop:** Nov 18-19, 2010, Golden, Colorado, USA  
[learn more](#)

**RockWare Europe Small Group Training:** Lugano, Switzerland, Europe  
[email to learn more](#)

**RockWare Web-Based Training:** Need just a couple of hours of RockWare expertise?  
[email to learn more](#)



RockWare Inc., founded in 1983, is a leading developer and reseller of earth science software solutions, with over 150 affordable GIS, environmental, geotechnical, mining, and petroleum packages. Visit the RockWare website at <http://www.rockware.com/>.

Prices are subject to change without notice.

RockWare is an Authorized ESRI (R) reseller

MapInfo is a registered trademark provided under license from Pitney Bowes Software Inc (C)2010 - RockWare, Inc. - 2221 East St, Suite 101, Golden, CO 80401 USA - All Rights Reserved. All products and names mentioned are the property of their respective owners.