



May 2010 Announcement

800 775 6745

## NEWS

## RockWare - U.S. Exclusive Distributorship

**RockWare Software - SWS Software**



RockWare has been awarded the exclusive distributorship of Schlumberger Water Services (SWS) software products in the United States. (See also the **sale prices** below.)

Visit [rockware.com](http://rockware.com) for all of your groundwater modeling software needs.

## SALE

## SWS Software Sale

**May 17 - June 30, 2010**

Huge discounts on **commercial & government licenses** of the following software titles:

- \* AquaChem
- \* Aquifer Test (Std, Pro)
- \* GW Contour
- \* Hydro GeoAnalyst
- \* Hydro GeoBuilder
- \* Visual MODFLOW
- \* Visual MODFLOW Pro
- \* Visual MODFLOW Premium
- \* Visual MODFLOW + SEAWAT

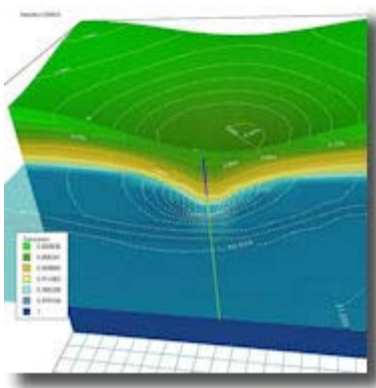
[BACK TO TOP](#)

## FEATURED PRODUCTS

## Visual MODFLOW Premium

**3D Groundwater Flow & Contaminant Transport Modeling**

Expanded groundwater simulation capabilities in **Visual MODFLOW Premium** tackle the most challenging groundwater projects with ease thanks to this impressive new suite.



**MODFLOW-2000** - world standard for groundwater flow simulations

**MODFLOW-2005** - three-dimensional finite-difference groundwater-model, 2005 version

**MODPATH** - standard package for forward and reverse particle tracking

**Zone Budget** - for sub-regional water budget calculations

**MT3DMS** - for multi-species contaminant transport simulations

**MT3D99** - an enhanced version of MT3DMS

**MNW (Multi-Node Well)** - designed to help simulate wells with well screens that span multiple layers

**RT3D** - for reactive transport simulations

**PHT3D** - a multi-component transport model for three-dimensional reactive transport in saturated porous media

**SEAWAT-v4** - the latest USGS modeling code designed to address 3D variable-density groundwater flow coupled with multi-species solute and heat transport and **more**.

[Read more](#)

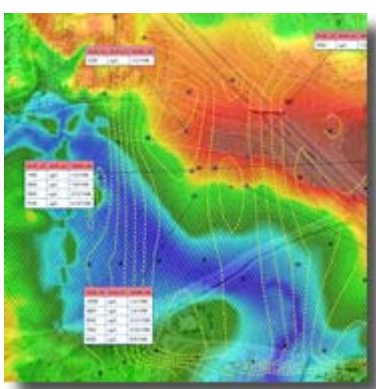
[Visual MODFLOW Premium sale pricing](#)

[BACK TO TOP](#)

## Hydro GeoAnalyst

**Comprehensive solution for managing groundwater and environmental data**

**Hydro GeoAnalyst** is an all-in-one desktop concept that provides one-click access to many powerful features: Data Transfer System, Query Editor, GIS Map Manager, 2D Cross-Section Editor, 3D-Explorer, Template Manager, Report Editor, and much more!



**Flexible:** Design the data structure, borehole log templates, and reporting styles that you want. Customize tables, fields, lookup tables for all of your projects.

**Scalable:** Expand the scope, size, and structure of your database at any point in the project. Applicable for projects with data sets ranging from 4 to 4000 wells.

**Expandable:** **Hydro GeoAnalyst** is now integrated with **AquiferTest Pro** and **AquaChem** so that you can start your projects in **Hydro GeoAnalyst** and expand your set of analytical tools as your projects grow to meet all of your hydrogeological analysis needs.

[Read more](#)

[Hydro GeoAnalyst sale pricing](#)

[BACK TO TOP](#)

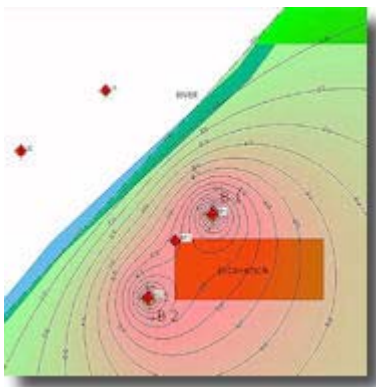
## AquiferTest Pro

**Pump test and slug test software**

**AquiferTest** is a quick and easy-to-use software program, specifically designed for graphical analysis and reporting of pumping test and slug test data.

**AquiferTest** offers all the features and tools you need, in one program, to calculate the hydraulic properties of your aquifer. These include:

- \* Confined aquifers
- \* Unconfined aquifers
- \* Leaky aquifers
- \* Fractured rock aquifers



In **AquiferTest 4.2**, with the integration of derivative analysis capabilities, trend corrections, and data contouring, you will have the tools to analyze and report your pumping test data like never before!

[Read more](#)

[AquiferTest sale pricing](#)

[BACK TO TOP](#)

## TIPS

## RockWorks15: Case Studies

**RockWorks Support Page**

Check out the RockWorks support page on our website, and the list of Case Studies which are available:

- \* **Geophysics:** Digital cone penetrometer data and clandestine gravities, 3D visualization of seismic activity, gravity/magnetic survey data
- \* **Mining:** Multi-seam coal reserves, aggregate reserves, industrial mineral deposits, sand and gravel, dredge mining
- \* **Stratigraphy:** Pinchouts and steep topography, complex stratigraphy
- \* **Gridding Tools:** Adjusting DEM grids to fit measured elevations, 3D surfaces from contour maps & aerial photo
- \* **Enviro/Geotechnical:** visualizing leaking tanks, modeling NAPLS, RockWare grid data in Visual MODFLOW, slope failure, Cesium-137 at Hanford
- \* **Color Modeling:** From outcrops, from GPR profile images

[Read more](#)

[Download demo](#)

[BACK TO TOP](#)

## IN THIS ISSUE

**RockWare and SWS Software:** RockWare is now the exclusive distributor of SWS Software in the U.S.

**SWS Software Sale:** Save on commercial & gov't licenses until June 30, 2010

**Visual MODFLOW:** 3D groundwater flow & contaminant transport modeling

**HydroGeo Analyst:** Groundwater & environmental data management

**AquiferTest:** Pump test & slug test software

**RockWorks15 Tips:** Case studies on the web

**No time? Short on staff? Don't want to learn new software? Let RockWare Consulting help!**

## TRAINING/WORKSHOPS

**RockWorks Workshop:** May 20-21, 2010 in Golden, Colorado, USA  
**class full**

**RockWorks Workshop: New Class added** June 23-24, 2010 in Golden, Colorado, USA  
[learn more](#)

**RockWorks Workshop:** Oct 14-15, 2010 in Golden, Colorado, USA  
[learn more](#)

**RockWare Europe Small Group Training:** Lugano, Switzerland, Europe  
[email to learn more](#)

**RockWare Web-Based Training:** Need just a couple of hours of RockWare expertise?  
[email to learn more](#)



RockWare Inc., founded in 1983, is a leading developer and reseller of earth science software solutions, with over 150 affordable GIS, environmental, geotechnical, mining, and petroleum packages. Visit the RockWare website at <http://www.rockware.com/>.

Prices are subject to change without notice.

RockWare is an Authorized ESRI<sup>®</sup> reseller

MapInfo is a registered trademark provided under license from Pitney Bowes Software Inc (C)2010 - RockWare, Inc. - 2221 East St, Suite 101, Golden, CO 80401 USA - All Rights Reserved. All products and names mentioned are the property of their respective owners.