



April 2010 Announcement

800 775 6745

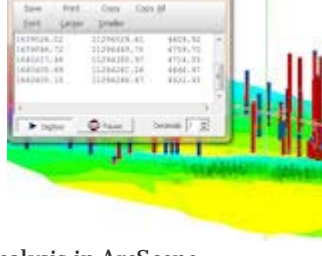
NEW VERSIONS

RockWorks15

RockWorks15 2010.4.15 available

New features in the latest build of **RockWorks15**:

- * **Digitize XYZ** coordinates in RockPlot3D.
- * View **World Coordinates** of any point in RockPlot3D.
- * Create borehole location maps in **Google Earth**.
- * Export downhole log data to **ESRI 3D Shapefiles** with data attributes for display & analysis in ArcScene.
- * Save/load project dimensions for **sub-projects**.
- * Save **profile locations** for easy scripting.
- * **Import stratigraphy** tops from a spreadsheet listing depths or elevations.
- * **Multi-threading** added to selected gridding and solid modeling algorithms - much faster.
- * New grid and solid modeling **resampling tools** - much faster.
- * Much more.



[Read more](#)
[Download Demo](#)
[RockWorks15 pricing](#)

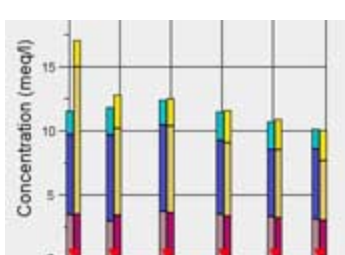
[BACK TO TOP](#)

AquaChem 2010.1

New version available

Here are just some of the added features in this new version of **AquaChem**:

- * **Stacked Bar Chart** - see temporal changes in the ion balance of major anion/cations
- * **Grouped Box and Whisker Plot** - compare plots belonging to different domains/areas
- * Generate multiple Time Series, Detection Summary, and Box & Whisker Plots using **Batch Mode**
- * Enhanced **Durov Plot**
- * Import and display **hydrographs on time series plots** to compare and correlate to trends in water quality
- * Link AquaChem project to a **Hydro GeoAnalyst (HGA)** SQL Database
- * Compare samples to **U.S. EPA Hardness-Dependent** standards
- * Enhanced **Query** functions
- * Much more



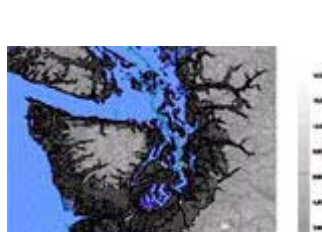
[Read more](#)
[AquaChem pricing](#)

[BACK TO TOP](#)

Surfer 9

Surfer 9.9.785 Update

A new build is available for **Surfer 9**. Licensed users can use the Help / Check for Update menu command to download the update automatically.



Surfer 9 enhancements:

- * UTM to State Plane translations
- * Grid node editor
- * Grid model imports
- * DXF imports
- * WMF, DXF, PDF exports

[Read more](#)
[Download demo](#)
[Surfer pricing](#)

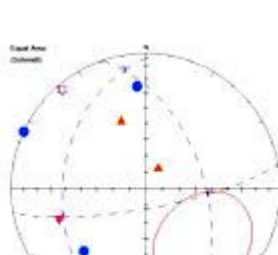
[BACK TO TOP](#)

Spheristat 3

New version available

SpheriStat 3 contains these new features, and more.

- * Compatible with Vista and Windows 7
- * Customize your map and net symbols
- * Change default map and net symbol sets
- * Publish datasets with custom symbols included
- * Display planar data as pole trend and plunge
- * Added output options for analyses
- * Dataset size limited only by available computer memory



[Read more](#)
[Download demo](#)
[SpheriStat pricing](#)

[BACK TO TOP](#)

DeltaGraph 5.x

Special Pricing & Free Upgrade

DeltaGraph - the popular graphing software - has a new version coming soon. Effective April 15 2010, a **\$100 discount** will apply to commercial and academic licenses of DeltaGraph 5. And, DeltaGraph 5 purchases made March 1, 2010 and after will receive a free upgrade to DeltaGraph 6.0 upon its release.



Coming in DeltaGraph 6:

- * User interface enhancements for the latest Mac OS & Windows releases
- * International text support
- * Cross-platform document files
- * Support for Pantone (R) & other 3rd-party spot colors in PDF & EPS exports
- * Greatly improved chart rendering quality in Windows

[Read more](#)
[DeltaGraph pricing](#)

[BACK TO TOP](#)

CTD-Diver

Special pricing while supplies last

The **CTD-Diver** sets the standard for reliability and longevity in **groundwater quality monitoring**. The CTD-Diver is a fully stand-alone datalogger with built-in memory, battery and sensors. Its ceramic casing and unparalleled conductivity measuring range (0-80 mS) make the CTD-Diver suitable for use at every measuring site.



The CTD-Diver is impervious to the most aggressive substances found in water environments. It offers simultaneous measuring of groundwater level, temperature, and conductivity. These are measured at time intervals pre-defined by the user, and stored in the datalogger's memory for readout at any time.

[Read more](#)
 Contact **RockWare** for pricing. Please be sure to specify your locale.

[BACK TO TOP](#)

TIPS

RockWorks15: Working with Sub-Projects

Use the Sort, Query and Project Dimensions tools to group and model boreholes within a project.

For example, let's say that you have a project in which there are dozens of quarries within a linear deposit that extends over several miles. You could create separate RockWorks projects for each quarry, but managing the lithology and stratigraphy types would be unwieldy. And managing boreholes in-between the quarries would also be troublesome.

Instead, you can classify your boreholes with a site name, sort the boreholes by site, query the holes by site, and save/load specific project dimensions by site.

1. Add a custom field to the Location table named *Site*: Open your project in RockWorks and right-click anywhere on the Location datasheet and select Choose Optional Fields. Click the Add a New Field button and name it "Site" as a String field.
2. Enter the Site names for your boreholes. An easy way to do this for existing boreholes is to File / Transfer the locations to the Utilities datasheet, enter the Site names in the Site column for all the holes, and then File / Transfer the data back to the Borehole Manager.
3. Sort the boreholes by Site name: Use the View / Change Sort of Boreholes menu option to define the Site field as the primary sort field. (You can then add Name or other field as the secondary sort.)
4. Enable only those boreholes in a selected Site by clicking manually, or (easier) using the View / Filter Boreholes query tool to enable only those holes with Optional Fields / Site / Equal To the site name you enter.
5. Use the Scan Enabled Boreholes tool to scan for project dimensions using those enabled holes. Fine-tune these (e.g. node spacing) as necessary.
6. Use the Save Dimensions to File button to save these project dimensions for later retrieval.

[Read more](#)
[Download demo](#)

[BACK TO TOP](#)

IN THIS ISSUE

RockWorks15: New build available - Google Earth, 3D digitizing, more.

AquaChem 2010.1: New version of this water quality management software

Surfer 9: New build of this popular contouring program

SpheriStat 3: New version for exploring orientation data

DeltaGraph: Special pricing & free upgrade

CTD-Diver: Special pricing while supplies last

RockWorks15 Tips: Working with sub-projects

TRAINING/WORKSHOPS

Surfer Workshop: May 19, 2010 in Golden, Colorado, USA

[learn more](#)

GWB Workshop: May 13-14, 2010 in Golden, Colorado, USA

class full
[request wait-list](#)

RockWorks Workshop: May 20-21, 2010 in Golden, Colorado, USA

class full
[request wait-list](#)

RockWorks Workshop: Oct 14-15, 2010 in Golden, Colorado, USA

[learn more](#)

RockWare Europe Small Group Training: Lugano, Switzerland, Europe

[email to learn more](#)



RockWare Inc., founded in 1983, is a leading developer and reseller of earth science software solutions, with over 150 affordable GIS, environmental, geotechnical, mining, and petroleum packages. Visit the RockWare website at <http://www.rockware.com/>.

Prices are subject to change without notice.

RockWare is an Authorized ESRI (R) reseller

MapInfo is a registered trademark provided under license from Pitney Bowes Software Inc (C) 2010 - RockWare, Inc. - 2221 East St, Suite 101, Golden, CO 80401 USA - All Rights Reserved.

All products and names mentioned are the property of their respective owners.