



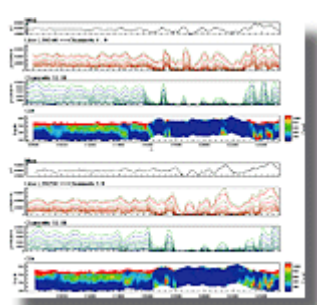
March 2010 Announcement

800 775 6745

NEW VERSIONS

Encom PA V10

Use **Encom PA** to create profiles, maps, images, and 3D displays within one software environment. In this release **Encom PA** focuses on making it easier to work with datasets in 1, 2 and 3-dimensional displays and producing more realistic 3D geological models of the earth through its improved range of digitizing and feature editing capabilities.



- * Improved feature editing
- * Improved database maintenance tools
- * Improved data linking
- * Extended large grid support
- * Advanced feature editing
- * Much more

[Read more](#)
[Encom PA pricing](#)

[BACK TO TOP](#)**GMS 7.1**

This new version of **GMS** contains many new features, including:

MODFLOW enhancements

- * MODFLOW MNW Package
- * MODFLOW HFB parameters
- * MODFLOW SFR parameters
- * Better handling of unsupported MODFLOW packages in the Name file
- * Model checker support for DRT, ETS and MNW packages

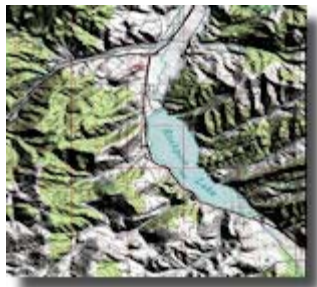
PEST

- * Support for the latest version of PEST
- * Parallel PEST - Now you can run PEST in parallel on your own computer to take advantage of machines with multiple cores
- * SVD and SVD-Assist - Now you use the Singular Value Decomposition option with PEST as well as the very powerful SVD-Assist method

[Read more](#)
[Get a quote](#)

[BACK TO TOP](#)**Global Mapper 11.02**

Global Mapper's newest version has *dozens* of new features - too many to list here, so be sure to visit our website for a complete list.

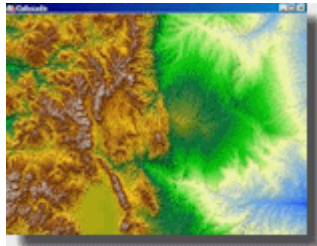


- * Updated map legends
- * New raster & elevation layer resampling tools
- * New buffer area tools
- * GeoTIFF scaling options
- * Batch conversion of multi-band GeoTIFF
- * Dozens of new supported formats
- * Custom datums with user-created control points
- * Lots of 3D View improvements
- * LIDAR point cloud changes
- * Shapefile export updates
- * and much, much more

[Read more](#)
[Download demo](#)
[Global Mapper pricing](#)

[BACK TO TOP](#)**Vertical Mapper 3.7**

Vertical Mapper is a surface modeling program which runs seamlessly with **MapInfo Professional**. Use **Vertical Mapper** to create, display, manage, and interpret grid-based continuous geospatial data.



New in version 3.7:

- * Supports v9.5 and v10.0 of MapInfo Professional
- * Imports raster data as a Vertical Mapper grid: BMP, JPG, GIF, ECS, JP2, PNG, TIF, SID formats

[Read more](#)
[Get a quote](#)

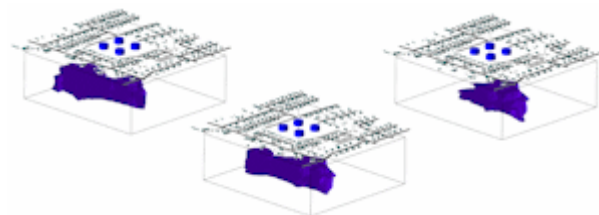
[BACK TO TOP](#)

TIPS

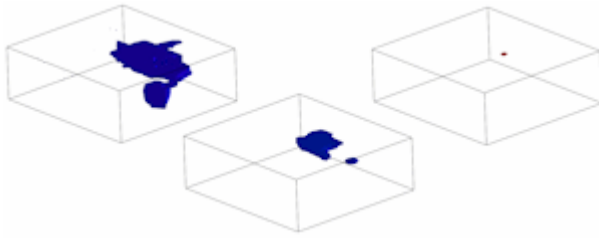
RockWorks15: Animations

The RockWorks 3D viewing window offers a number of animations - a stunning way to impress your clients.

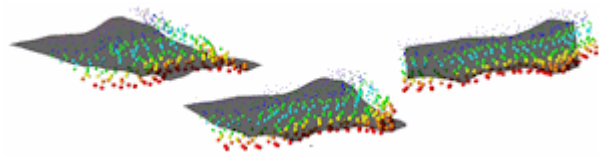
3D Model Morphing - Use RockWorks to morph multiple solid models, with any number of intermediate steps, and create an animation.



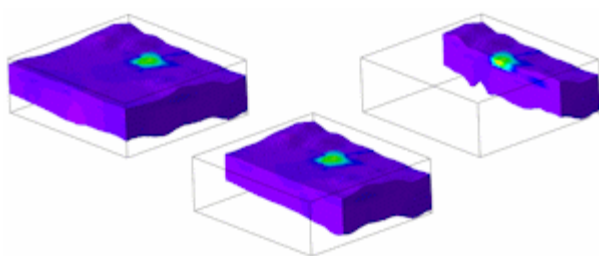
3D Isosurface Animation - Animate successive isosurface levels.



3D View Rotation - Animate the spinning of any 3D scene.



3D Model Slicing - Remove successive slices of a solid model (isosurfaces or voxels).



[Read more](#)
[Download demo](#)

[BACK TO TOP](#)**IN THIS ISSUE**

Encom PA v10: New version of this interactive display & interpretation software

GMS 7.1: New version of this comprehensive groundwater modeling program

Global Mapper 11.02: A new build of this popular GIS program

Vertical Mapper 3.7: New version of this contour modeling extension for MapInfo Pro

RockWorks15 Tips: RockPlot3D Animations

TRAINING/WORKSHOPS

GWB Workshop: May 13-14, 2010 in Golden, Colorado, USA
only 2 seats left!
[learn more](#)

Surfer Workshop: May 19, 2010 in Golden, Colorado, USA
[learn more](#)

RockWorks Workshop: May 20-21, 2010 in Golden, Colorado, USA
[learn more](#)

RockWorks Workshop: Oct 14-15, 2010 in Golden, Colorado, USA
[learn more](#)

RockWare Europe Small Group Training: Lugano, Switzerland, Europe
[email to learn more](#)



RockWare Inc., founded in 1983, is a leading developer and reseller of earth science software solutions, with over 150 affordable GIS, environmental, geotechnical, mining, and petroleum packages. Visit the RockWare website at <http://www.rockware.com/>.

Prices are subject to change without notice.
 RockWare is an Authorized ESRI (R) reseller

MapInfo is a registered trademark provided under license from Pitney Bowes Software Inc (C)2010 - RockWare, Inc. - 2221 East St, Suite 101, Golden, CO 80401 USA - All Rights Reserved. All products and names mentioned are the property of their respective owners.