



February 2010 Announcement

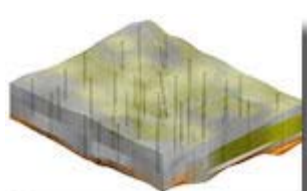
800 775 6745

NEW VERSIONS

RockWorks15

We've posted a new build of **RockWorks15**, with dozens of new features:

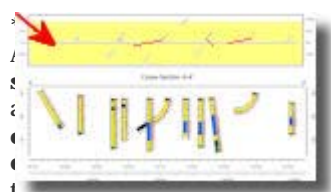
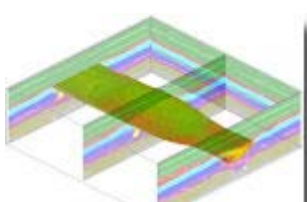
* Interpolate **color models** from borehole data, for display as a 3D model or fence diagram, in cross section, plan-view, etc. Compute volumes.



Color	Comment	Color	Comment
[Color]	2.5YR/7/1	[Color]	2.5YR/7/1
[Color]	2.5YR/8/3	[Color]	2.5YR/8/3
[Color]	2.5YR/7/3	[Color]	2.5YR/7/3
[Color]	2.5YR/7/6	[Color]	2.5YR/7/6
[Color]	2.5YR/7/1	[Color]	2.5YR/7/1
[Color]	2.5YR/7/4	[Color]	2.5YR/7/4
[Color]	2.5YR/7/1	[Color]	2.5YR/7/1
[Color]	2.5YR/7/8	[Color]	2.5YR/7/8

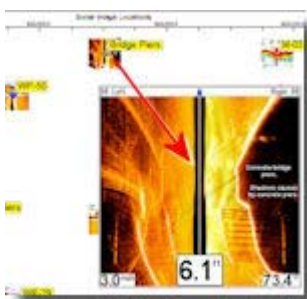
from descriptive data (such as Munsell codes or descriptive phrases), and from raster images.

* Interpolate color models from **vertical image panels** - such as GPR or even hand-drawn sections. You can define the color sampling resolution, filter colors, compute volumes.



your profile diagrams, to display the placement of the holes relative to the profile line onto which they're projected.

* Add **images** and **hyperlinks** to your point maps - click on an item and the associated file will load in the default Windows application.



* Export Shapefiles from RockPlot2D

* And much more.

[Read more](#)
[Download demo](#)
[RockWorks pricing](#)

Universities: check out our **annual academic site license** for **\$2499** - unlimited installations within the department, valid for a year.

[BACK TO TOP](#)

IN THIS ISSUE

RockWorks15: New build, with dozens of new features - color modeling and more. Academic site license pricing.

WMS 8.3: New version of this popular watershed hydrology & hydraulics program

New Training Venue: Check out our new workshop site

RockWorks15 Tips: Null values, and 2 new Case Studies

Winter Sale - Discount pricing on - SiteMaster Building LT

TRAINING/WORKSHOPS

Surfer Workshop: March 3, 2010 in Golden, Colorado, USA
[learn more](#)

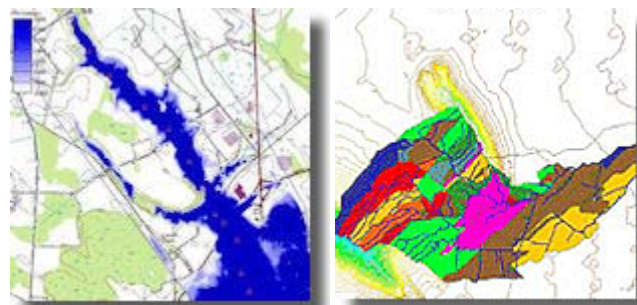
RockWorks Workshop: March 4-5, 2010 in Golden, Colorado, USA
[learn more](#)

RockWorks Workshop: May 20-21, 2010 in Golden, Colorado, USA
[learn more](#)

RockWorks Workshop: Oct 14-15, 2010 in Golden, Colorado, USA
[learn more](#)

RockWare Europe Small Group Training: Lugano, Switzerland, Europe
[email to learn more](#)

WMS 8.3



This new version of **WMS** contains many new features, including:

- * Export rainfall datasets to KMZ (Google Earth) animation files
- * Export index map cells to Google Earth as vector polygons
- * Import GSSHA index map files
- * Support of Contaminant Transport and NSM modeling in GSSHA
- * Create mass and concentration plots for NSM constituents and for simple first order constituents
- * Support of Overland flow boundary conditions in GSSHA
- * Improvements on Joining SSURGO Data
- * Improved GSSHA Stochastic Model Calibration

[Read more](#)
[Get a quote](#)

[BACK TO TOP](#)

TRAINING

RockWare Workshops

We've moved our workshops to RockWare's newly-remodeled meeting room. These **smaller classes** offer more one-on-one contact with the trainers!



See our list of classes [above](#), or on the [web](#).

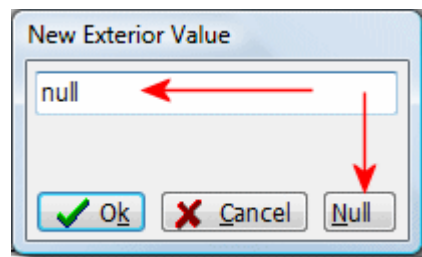
[BACK TO TOP](#)

TIPS

RockWorks15: Tips

Null Values

Need to assign null values in **RockWorks15** tree menus? Just click the new "Null" button, or type the word "null" (not case-sensitive) and RockWorks will automatically assign its null value.

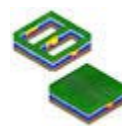


Case Studies

We've added two new color-modeling case studies to our website; click on a link below to download the PDF:



[Creating a Color Model from Outcrop Images](#)



[Creating a Color Model from GPR Profiles](#)

[Read more](#)
[View all Case Studies](#)

[BACK TO TOP](#)



RockWare Inc., founded in 1983, is a leading developer and reseller of earth science software solutions, with over 150 affordable GIS, environmental, geotechnical, mining, and petroleum packages. Visit the RockWare website at <http://www.rockware.com/>. Prices are subject to change without notice.

RockWare is an Authorized ESRI (R) reseller

MapInfo is a registered trademark provided under license from Pitney Bowes Software Inc (C)2010 - RockWare, Inc. - 2221 East St, Suite 101, Golden, CO 80401 USA - All Rights Reserved. All products and names mentioned are the property of their respective owners.