



January 2010 Announcement

800 775 6745

FEATURED PRODUCTS

WellCAD

WellCAD's Basic Module incorporates all features and tools necessary to import, edit, process and display your Well data. A number of additional modules are also available:

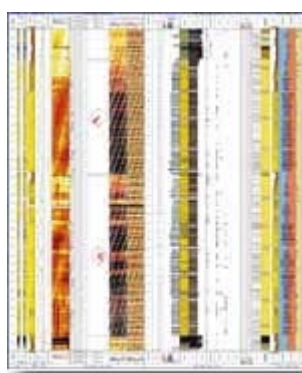
CoreCAD: interactive digital core description

Deviation: Well path visualization tool.

Borehole Image Analysis: display and interpretation tools.

Sonic Processing: Import, pre-processing, dt picking and more.

[Read more](#)
[Download demo](#)
[WellCAD pricing](#)

**RockWare GIS Link v2**

Install the **RockWare GIS Link** toolbar into ArcMap and import your **RockWorks** borehole locations. Create **RockWorks** cross sections, profiles, fence diagrams, striplogs, structure and isopach maps right from ArcView.

[Read more](#)
[Download demo](#)
[RockWare GIS Link pricing](#)

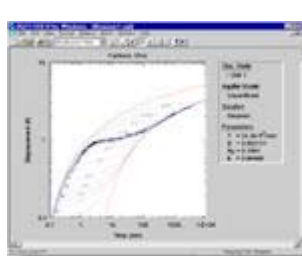
**AQTESOLV**

AQTESOLV for Windows features a comprehensive suite of analytical solutions for evaluating pumping test and slug test data in confined, unconfined, leaky and fractured aquifers.

AQTESOLV pioneered the integrated use of visual and automatic curve-matching methods for the analysis of aquifer test data. No other program provides greater ease or flexibility in evaluating data from pumping tests, slug tests or constant-head tests.

Standard and Pro versions are available.

[Read more](#)
[Download demo](#)
[AQTESOLV pricing](#)

[BACK TO TOP](#)

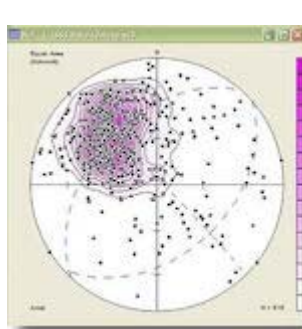
NEW VERSIONS

SpheriStat 3.0

SpheriStat 3.0 for Windows is an integrated, powerful and easy-to-use analytical tool for making stereonet, structural maps and rose diagrams, with lots of display, printout and export options. Some of the new features include:

- * Runs in Vista and Windows 7.
- * User-created map and net symbols.
- * Dataset size limited only by available computer memory.
- * Added output options for analyses.
- * Colored map and circular diagram symbols.
- * Display of planar data as pole trend and plunge.

[Read more](#)
[Download demo](#)
[SpheriStat pricing](#)

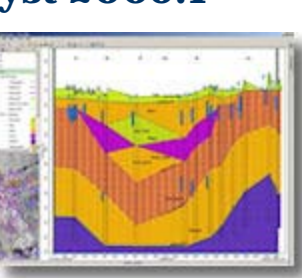
**Hydro GeoAnalyst 2009.1**

Hydro GeoAnalyst 2009.1 is full of added functionality and enhancements, delivering functionality unavailable with other commercial software - all within a single, flexible desktop solution.

From interpretation and analysis of groundwater and borehole data, to advanced 3D visualization and reporting, professionals like you can:

- * Manage and report vast amounts of data for municipal, state, & national groundwater monitoring programs
- * Manage various data types collected at remediation sites (soil and groundwater samples, hydrogeologic profiles, etc.)
- * Store historic and current project data in a single data management system
- * Analyze the relationship between subsurface geology, contaminant plumes, and risks to land use policy
- * Assess borehole data acquired for mineral exploration
- * Prepare data for use in groundwater models such as Visual MODFLOW
- * Produce monthly, quarterly, or annual reports mandated by regulators

[Read more](#)
[Hydro GeoAnalyst pricing](#)

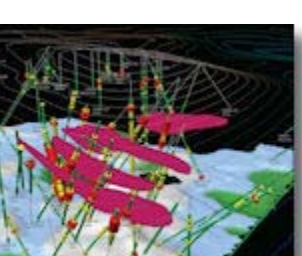
**Encom Discover 11.1 & Discover 3D 5.0.63**

With its extensive range of features customized for geoscience applications, **Discover** unlocks the power of **MapInfo Professional** for geologists and other geoscience professionals. Bug fixes and performance improvements include:

- * **Discover 11.1:** hydrology toolset, grid handlers and grid handler performance. Supports Windows 7
- * **Discover 3D 5.0.63:** 3D rendering, DXF and vector file import, toolbar and selection
- * **Licensing:** improvements to menus on server deployments

Encom Discover and Discover 3D updates are available from the [developer](#).

[Read more](#)
[Get a quote](#)

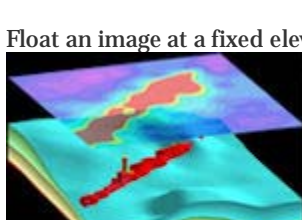
[BACK TO TOP](#)

TIPS

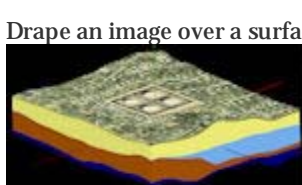
RockWorks15: 3D Image Tools

Use **RockWorks15** to display images in 3D:

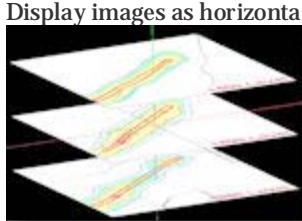
Float an image at a fixed elevation:



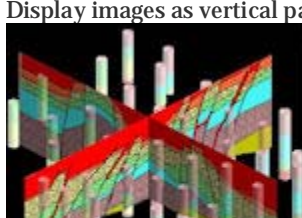
Drape an image over a surface:



Display images as horizontal panels:



Display images as vertical panels:



and more.

[Read more](#)
[Download demo](#)
[RockWorks15 pricing](#)

[BACK TO TOP](#)**IN THIS ISSUE**

WellCAD: Composite log plotting software

RockWare GIS Link: RockWorks cross-section generation for ArcGIS

AQTESOLV: Pumping Test, Slug Test & Single-Well Test Analysis

SpheriStat v3: Stereonets, rose diagrams - New Version

HydroGeo Analyst: Groundwater & borehole data management - Update available

Encom Discover & Discover 3D: GIS for the geosciences - Updates available

RockWorks15 Tips: 3D image tools

Winter Sale - Huge discounts on - SiteMaster Building LT

Encom Discover & Discover 3D: GIS for the geosciences - Updates available

RockWorks15 Tips: 3D image tools

Winter Sale - Huge discounts on - SiteMaster Building LT

TRAINING/WORKSHOPS

RockWorks Workshop: March 4-5, 2010 in Denver, Colorado, USA

[learn more](#)

Surfer Workshop: March 3, 2010 in Golden, Colorado, USA

[learn more](#)

RockWare Europe Small Group Training: Lugano, Switzerland, Europe

[email to learn more](#)



RockWare Inc., founded in 1983, is a leading developer and reseller of earth science software solutions, with over 150 affordable GIS, environmental, geotechnical, mining, and petroleum packages. Visit the RockWare website at <http://www.rockware.com/>. Prices are subject to change without notice.

RockWare is an Authorized ESRI (®) reseller

MapInfo is a registered trademark provided under license from Pitney Bowes Software Inc (C)2010 - RockWare, Inc. - 2221 East St, Suite 101, Golden, CO 80401 USA - All Rights Reserved. All products and names mentioned are the property of their respective owners.